



PLI: £662 SCI: £453 TPI: 3098 LPI: 3628

Sire: PROGENESIS TOPNOTCH by JEDI
Dam: SILVERRIDGE V DUKE EMAIL EX-90-2E-CAN 9* by DUKE
GDam: SILVERRIDGE V SSHOT EARRING EX-90-6YR-CAN 10*

AI Code: HO6076

DPF MFF RDF BLF CNF BYF Reg. HH1F HH2F HH3F HH4F HH5F HH6F
 MWF CVF 6412857528 HCDF HMWF

UK PRODUCTION dau: US 4945 / UK 235 herds: US 825 / UK 46 Rel 98% 12/2024

Milk kg 668	Fat kg 36.9	Fat % 0.11	Protein kg 30.3	Protein % 0.09	PLI £662/93% Rel
-----------------------	-----------------------	----------------------	---------------------------	--------------------------	----------------------------

UK TYPE dau: US 2151 / UK 137 herds: US 483 / UK 32 Rel 91% 12/2024

	Score	-2	-1	0	+1	+2
Type Merit	+1.32					
Mammary	+0.97					
Legs & Feet	+0.53					
Stature	-0.55					
Chest Width	+1.63					
Body Depth	+1.14					
Angularity	+0.53					
Rump Angle	-0.38					
Rump Width	+2.10					
Rear Leg Side	-0.07					
Foot Angle	-0.38					
Fore Udd. Att.	+0.17					
Rear Udd. Ht.	+1.37					
Udder Support	+2.76					
Udder Depth	-0.03					
Front Teat Pl.	+2.05					
Teat Length	+0.36					
Rear Teat Pl.	+2.41					
Teat Pos. Side	+1.51					
Locomotion	+0.76					
Condition Score	+1.61					

SEMEX TRAITS* Immunity **108**

Methane Efficiency **107** Calf Immunity **102**

UK MANAGEMENT

Somatic Cell Count	-21	Lifespan	107
Mastitis Resistance	-1	TB Advantage	2.2
Fertility Index	2.4	Temperament	0.30
Direct Calving Ease %	-0.5	Ease of Milking	0.29
Maternal Calving Ease %	1.9	Enviro Cow	3

Unless stated otherwise, all female pictures relating to this product can be presumed to be a daughter of the advertised sire.

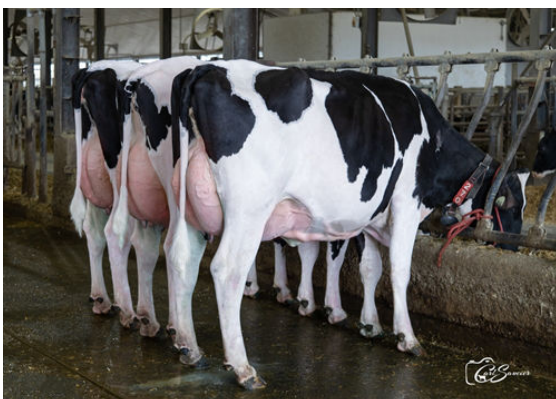
Proof Source - AHDB & Holstein UK. Semex UK abides by the AHDB Dairy and Holstein UK established Code of Advertising. Immunity indices: Semex Alliance. Methane Efficiency: Lactanet



PROGENESIS EINSTEIN WIMZY
DAUGHTER



HAH ALICE
DAUGHTER



EINSTEIN DAUGHTER GROUP

L to R - BEAUOISE EINSTEIN ELIAS, BEAUOISE EINSTEIN PIKKY, BEAUOISE EINSTEIN PIRKI