



**PLI: £570    SCI: £406    TPI: 2810    LPI: 3111**

**Sire:** ENDCO SUPERHERO by SUPERSHOT  
**Dam:** SANDY-VALLEY COKISNCREAM EX-93-5YR-USA DOM by SILVER  
**GDam:** SANDY-VALLEY CARROTCAKE EX-90-3YR-USA DOM

**AI Code: HO5606**

VG-CAN DPF RDF BLF CNF BYF Reg. HH1F HH2F HH3F HH4F HH5F HH6F  
 MWC CVF 653140616169 HCDF HMWC

**UK PRODUCTION** dau: US 6246 / UK 648 herds: US 1152 / UK 140 Rel 99% 12/2024

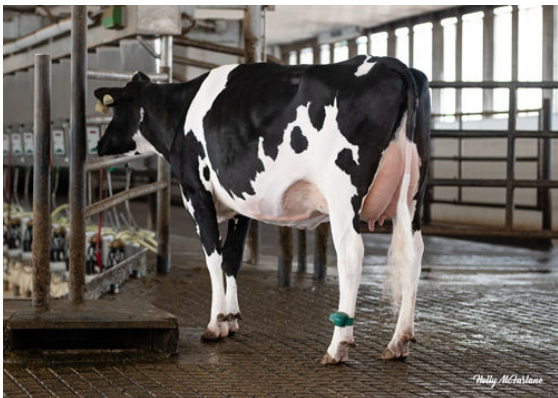
Milk kg	Fat kg	Fat %	Protein kg	Protein %	PLI
666	32.8	0.06	22.1	0.00	£570/96% Rel

**UK TYPE** dau: US 2516 / UK 355 herds: US 632 / UK 71 Rel 95% 12/2024

	Score	-2	-1	0	+1	+2
<b>Type Merit</b>	+0.91					
<b>Mammary</b>	+2.13					
<b>Legs &amp; Feet</b>	+0.64					
Stature	-0.24					
Chest Width	-0.35					
Body Depth	-1.20					
Angularity	-0.31					
Rump Angle	-2.21					
Rump Width	-0.24					
Rear Leg Side	+0.45					
Foot Angle	-1.05					
Fore Udd. Att.	+3.08					
Rear Udd. Ht.	+2.00					
Udder Support	+0.91					
Udder Depth	+2.19					
Front Teat Pl.	-0.40					
Teat Length	+0.17					
Rear Teat Pl.	+0.46					
Teat Pos. Side	+0.31					
Locomotion	+0.87					
Condition Score	+0.03					



**CHALLENGER DAUGHTER GROUP**  
 DAUGHTERS AT SANDY-VALLEY



**STANTONS CHALLENGER CHEERIO**



**PROGENESIS CHALLENGER EMBRACE**

**SEMEX TRAITS\***

**Immunity 96**

Methane Efficiency **104** | Calf Immunity **93**

**UK MANAGEMENT**

Somatic Cell Count	<b>-27</b>	Lifespan	<b>116</b>
Mastitis Resistance	<b>-2</b>	TB Advantage	<b>2.7</b>
Fertility Index	<b>6.3</b>	Temperament	<b>0.21</b>
Direct Calving Ease %	<b>-0.8</b>	Ease of Milking	<b>0.73</b>
Maternal Calving Ease %	<b>1.1</b>	Enviro Cow	<b>2.5</b>

**Unless stated otherwise, all female pictures relating to this product can be presumed to be a daughter of the advertised sire.**

Proof Source - AHDB & Holstein UK. Semex UK abides by the AHDB Dairy and Holstein UK established Code of Advertising. Immunity indices: Semex Alliance. Methane Efficiency: Lactanet