



PLI: £382 SCI: £287 TPI: 2540 LPI: 3120

Sire: COYNE-FARMS JABIR by FACEBOOK
Dam: VELTHUIS SUPERSONIC ALYSSA VG-87-2YR-CAN 9* by SUPERSONIC
GDam: VELTHUIS SG MOM ALESIA VG-87-2YR-CAN 23*

AI Code: HO4195

EX-90-CAN DPF MFF RDF BLF CNF Reg. HH1F HH2F HH3F HH4F HH5F
 BYF MWF CVF 64108798853 HH6F HCDF HMWF

UK PRODUCTION dau: US 7063 / UK 3209 herds: US 1490 / UK 450 Rel 99% 12/2024

Milk kg 378	Fat kg 18.2	Fat % 0.03	Protein kg 13.7	Protein % 0.01	PLI £382/98% Rel
-----------------------	-----------------------	----------------------	---------------------------	--------------------------	----------------------------

UK TYPE dau: US 2838 / UK 903 herds: US 846 / UK 129 Rel 98% 12/2024

	Score	-2	-1	0	+1	+2
Type Merit	+0.47			█		
Mammary	+1.01			███		
Legs & Feet	+0.58			██		
Stature	+0.73			███		
Chest Width	+0.24			█		
Body Depth	-0.16			█		
Angularity	+0.13			█		
Rump Angle	-0.82			█		
Rump Width	+0.33			█		
Rear Leg Side	+0.57			██		
Foot Angle	-0.42			█		
Fore Udd. Att.	+0.89			███		
Rear Udd. Ht.	-0.55			█		
Udder Support	+0.64			██		
Udder Depth	+1.04			███		
Front Teat Pl.	+0.59			██		
Teat Length	-1.16			█		
Rear Teat Pl.	+0.66			██		
Teat Pos. Side	+0.76			███		
Locomotion	+0.64			██		
Condition Score	+0.32			█		

SEMEX TRAITS* **Immunity 104**

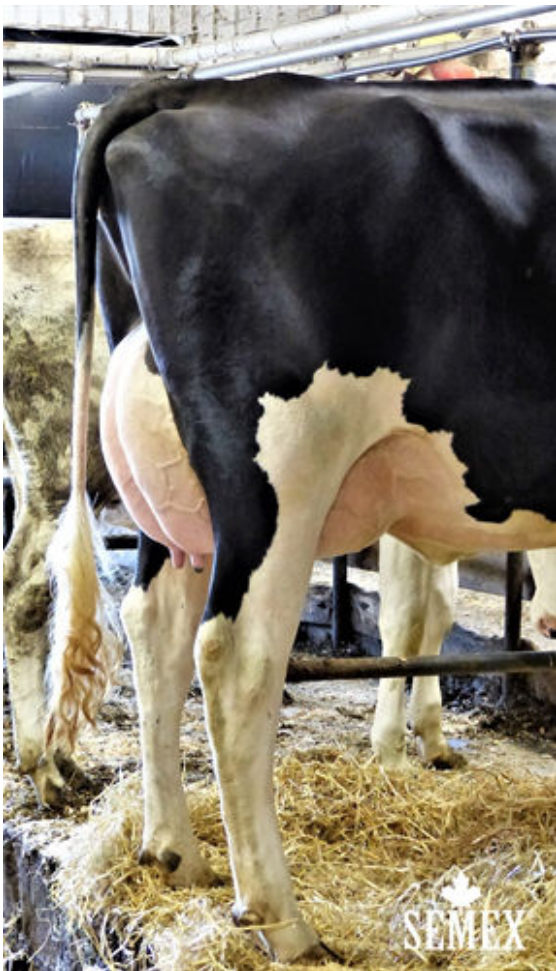
Methane Efficiency	95	Calf Immunity	103
--------------------	-----------	---------------	------------

UK MANAGEMENT

Somatic Cell Count	-13	Lifespan	76
Mastitis Resistance	-2	TB Advantage	1.3
Fertility Index	7	Temperament	0.11
Direct Calving Ease %	0.1	Ease of Milking	1.03
Maternal Calving Ease %	0.2	Enviro Cow	1.1

Unless stated otherwise, all female pictures relating to this product can be presumed to be a daughter of the advertised sire.

Proof Source - AHDB & Holstein UK. Semex UK abides by the AHDB Dairy and Holstein UK established Code of Advertising. Immunity indices: Semex Alliance. Methane Efficiency: Lactanet



GUSNIS ARMOUR MACY