



PLI: £7 SCI: £-62 TPI: 2215 LPI: 2901

Sire: FARNEAR DELTA-LAMBDA by DELTA
Dam: MATTENHOF TATOO HOPE VG-85-2YR-CHE by TATOO
GDam: HANNA-VRAY

AI Code: HO7251

RDF BLF BYF MWF Reg. HH1F HH2F HH3F HH4F HH5F HH6F HCDF
 CVF 71120157244705 HMWF

UK PRODUCTION dau: CAN G / UK 0 herds: CAN G / UK 0 Rel 74% 12/2024

Milk kg 158	Fat kg -6.1	Fat % -0.15	Protein kg 0.2	Protein % -0.06	PLI £7/69% Rel
-----------------------	-----------------------	-----------------------	--------------------------	---------------------------	--------------------------

UK TYPE dau: CAN G / UK 0 herds: CAN G / UK 0 Rel 58% 12/2024

	Score	-2	-1	0	+1	+2
Type Merit	+1.48					
Mammary	+2.93					
Legs & Feet	+0.51					
Stature	+1.41					
Chest Width	-0.47					
Body Depth	+0.38					
Angularity	+0.93					
Rump Angle	+0.96					
Rump Width	+1.58					
Rear Leg Side	-0.32					
Foot Angle	+0.50					
Fore Udd. Att.	+2.73					
Rear Udd. Ht.	+2.49					
Udder Support	+2.07					
Udder Depth	+2.43					
Front Teat Pl.	+0.89					
Teat Length	-0.31					
Rear Teat Pl.	+1.19					
Teat Pos. Side	+0.40					
Locomotion	+0.16					
Condition Score	-0.37					

SEMEX TRAITS* **Immunity 96**

Methane Efficiency	99	Calf Immunity	100
--------------------	-----------	---------------	------------

UK MANAGEMENT

Somatic Cell Count	-9	Lifespan	31
Mastitis Resistance	0	TB Advantage	5.1
Fertility Index	-3.3	Temperament	1.47
Direct Calving Ease %	-1.2	Ease of Milking	1.03
Maternal Calving Ease %	0.2	Enviro Cow	-0.2

Unless stated otherwise, all female pictures relating to this product can be presumed to be a daughter of the advertised sire.

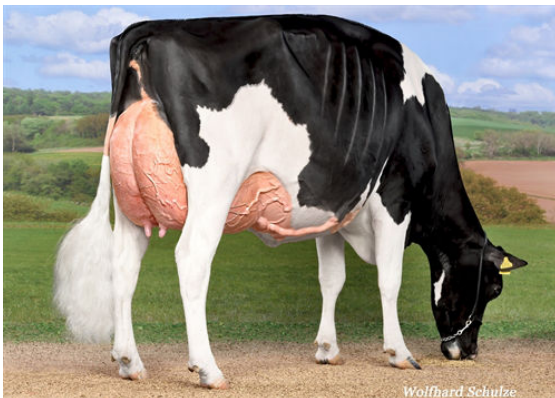
Proof Source - AHDB & Holstein UK. Semex UK abides by the AHDB Dairy and Holstein UK established Code of Advertising. Immunity indices: Semex Alliance. Methane Efficiency: Lactanet



MATTENHOF TATOO HOPE
DAM



HANNA-VRAY
GRANDDAM



HANNA-VRAY
GRANDDAM