



PLI: £78 SCI: £-93 PTI: 508 LPI: 3051

Sire: MARLIE AUTOGRAPH by TUXEDO
Dam: MARBRAE SITTLER'S CANDY VG-87-3YR-CAN ELITE by SITTLER
GDam: MARBRAE ARBITER'S CATALINA ELITE 1*

AI Code: A8962

TF AMF Reg. 70121232543 AH1F AH2F AHCF

UK PRODUCTION dau: CAN G / UK 0 herds: CAN G / UK 0 Rel 37% 12/2024

Milk kg	Fat kg	Fat %	Protein kg	Protein %	PLI
198	6.2	-0.03	4.9	-0.03	£78/39% Rel

UK TYPE dau: CAN G / UK 0 herds: CAN G / UK 0 Rel 42% 12/2024

	Score	-2	-1	0	+1	+2
Type Merit	+1.10				[Bar]	
Mammary	+0.70				[Bar]	
Legs & Feet	+1.20				[Bar]	
Stature	+1.30				[Bar]	
Chest Width	-0.50		[Bar]			
Body Depth	-0.10			[Bar]		
Angularity	+1.20				[Bar]	
Rump Angle	-0.70		[Bar]			
Rump Width	+1.50				[Bar]	
Rear Leg Side	-0.10			[Bar]		
Foot Angle	+0.80				[Bar]	
Fore Udd. Att.	0.00					
Rear Udd. Ht.	+0.80				[Bar]	
Udder Support	+1.60				[Bar]	
Udder Depth	+0.70				[Bar]	
Front Teat Pl.	-0.40		[Bar]			
Teat Length	+0.20			[Bar]		
Teat Pos. Side	-					

SEMEX TRAITS* Immunity 102

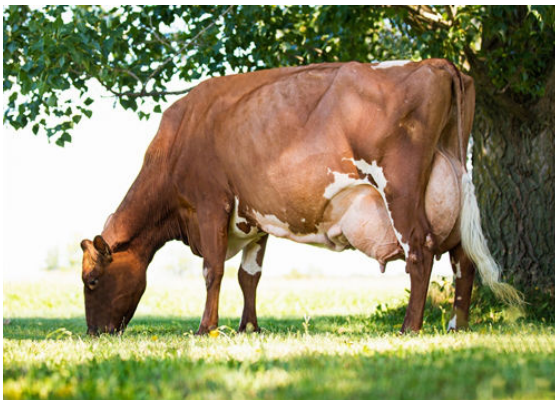
Calf Immunity 102

UK MANAGEMENT

Somatic Cell Count	2	Lifespan	9
Mastitis Resistance	-	TB Advantage	-
Fertility Index	0.9	Temperament	-
Direct Calving Ease %	-	Ease of Milking	-
Maternal Calving Ease %	-	Enviro Cow	0.2

Unless stated otherwise, all female pictures relating to this product can be presumed to be a daughter of the advertised sire.

Proof Source - AHDB & Holstein UK, Semex UK abides by the AHDB Dairy and Holstein UK established Code of Advertising. Immunity indices: Semex Alliance. Methane Efficiency: Lactanet



MARBRAE OBLIQUE'S CAMBRIDGE
THIRD DAM



MARBRAE ARBITER'S CATALINA
GRANDDAM