



**PLI: £200    SCI: £4    PTI: 559    LPI: 3170**

**Sire:** DES COTEAUX RUBYWAY by PARAGUAY  
**Dam:** MARBRAE ARBITER'S CATALINA EX-90-2E-CAN 1\* by ARBITER  
**GDam:** MARBRAE OBLIQUE'S CAMBRIDGE EX-92-6E-CAN 2\*

**AI Code: A8960**

TF AMF Reg. 70120893455 AH1F AH2F AHCF

**UK PRODUCTION** dau: CAN G / UK 0 herds: CAN G / UK 0 Rel 44% 12/2024

Milk kg	Fat kg	Fat %	Protein kg	Protein %	PLI
399	18.2	0.03	13.1	0.00	£200/44% Rel

**UK TYPE** dau: CAN G / UK 0 herds: CAN G / UK 0 Rel 49% 12/2024

	Score	-2	-1	0	+1	+2
Type Merit	+0.20			■		
Mammary	-0.20			■		
Legs & Feet	+0.40			■		
Stature	+0.50			■		
Chest Width	+0.10			■		
Body Depth	-0.50		■			
Angularity	+0.30			■		
Rump Angle	+0.60			■		
Rump Width	+1.40			■	■	
Rear Leg Side	+1.70			■	■	■
Foot Angle	+0.30			■		
Fore Udd. Att.	-0.60		■			
Rear Udd. Ht.	+0.30			■		
Udder Support	+0.20			■		
Udder Depth	-0.20			■		
Front Teat Pl.	-1.70	■	■			
Teat Length	-0.20			■		
Teat Pos. Side	-					

**SEMEX TRAITS\*** Immunity 102

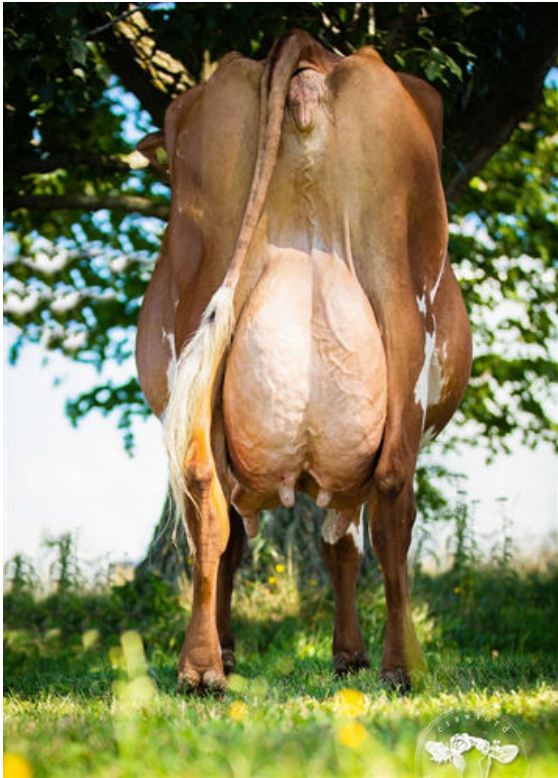
Calf Immunity 102

**UK MANAGEMENT**

Somatic Cell Count	4	Lifespan	30
Mastitis Resistance	-	TB Advantage	-
Fertility Index	-0.8	Temperament	-
Direct Calving Ease %	-	Ease of Milking	-
Maternal Calving Ease %	-	Enviro Cow	1.3

**Unless stated otherwise, all female pictures relating to this product can be presumed to be a daughter of the advertised sire.**

*Proof Source - AHDB & Holstein UK, Semex UK abides by the AHDB Dairy and Holstein UK established Code of Advertising. Immunity indices: Semex Alliance. Methane Efficiency: Lactanet*



MARBRAE OBLIQUE'S CAMBRIDGE  
GRANDDAM



MARBRAE ARBITER'S CATALINA  
DAM