



HAWARDEN IMPULS PREMIER
 ARETHUSA ON TIME VOGUE EX-94-5YR-CAN 3*
 LENCREST ON TIME
 HURONIA CENTURION VERONICA 20J EX-97%-5E-USA
 SOONER CENTURION
 GENESIS RENAISSANCE VIVIANNE VG-87-2YR-CAN 7*

BPI +120 Rel. 93% ASI 67

JH1F JNSF ABV 24* AUG

HWI +110 Rel. 81% **SI +229** Rel. 85%

PRODUCTION 88 Herds 365 Daughters 98% Rel RIPS 24%

Milk kg	Fat kg	%Fat	Protein kg	%Prot
-329	14	0.61	2	0.28

CONFORMATION 27 Herds 57 Daughters 90% Rel

		90	95	AVG	105	110
Overall Type	101					
Mammary System	104					

MAMMARY SYSTEM

Udder Texture	94	Centre Ligament	97
Udder Depth	101	Teat Placement (front)	106
Fore Attachment	106	Teat Placement (rear)	103
Rear Attach. Height	103	Teat Length	95
Rear Attach. Width	100		

DESCRIPTIVE

Stature	100	Chest Width	94	Bone Quality	99
Angularity	102	Loin Strength	94	Foot Angle	100
Muzzle Width	96	Pin Width	93	Rear Set	97
Body Depth	101	Pin Set	95	Rear Leg Rear View	104
Body Length	103	Rump Length	95		

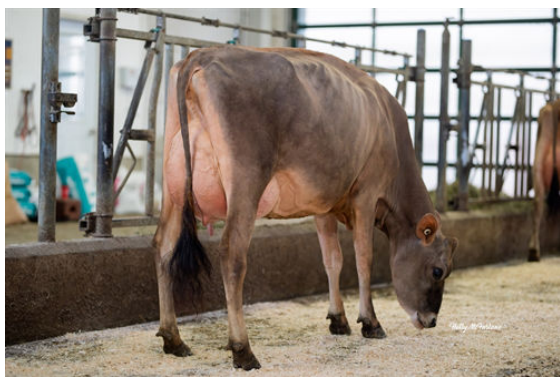
AUXILIARY TRAITS

Immunity

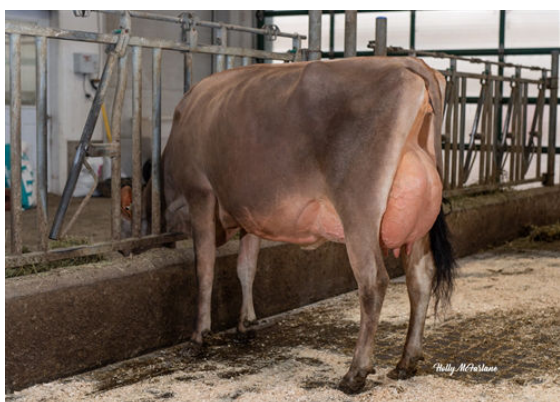
Milking Speed	100	Calf Immunity	
Temperament	101	Survival	106
Likability	102	Liveweight	99
Feed Saved	16	Somatic Cell Score	97
Gestation Length	-2	Daughter Fertility	101
Heat Tolerance	102	Mastitis Resistance	98



PAULLOR VIRAL MAVORNA



BRIDON PNV VERONICA



BRIDON PNV GRACIE