



STANTONS ELDORADO  
 PROGENESIS MILKTIME MIRAGE  
 STE ODILE MILKTIME  
 PROGENESIS MODESTY MISSILE GP-81-2YR-USA 2\*  
 BACON-HILL PETY MODESTY  
 OCD DELTA MISSY EX-93-5YR-CAN 6\*

**BPI +424 Rel. 70% ASI 165**

HH1F HH2F HH3F HH4F HH5F HH6F HCDF HMWF ABV 24\*DEC

**HWI +449** Rel. 65% **SI +712** Rel. 67%

**PRODUCTION** G Herds G Daughters 79% Rel RIPS 0%

Milk kg **200** Fat kg **29** %Fat **0.30** Protein kg **18** %Prot **0.23**

**CONFORMATION** G Herds G Daughters 73% Rel

		<b>90</b>	<b>95</b>	<b>AVG</b>	<b>105</b>	<b>110</b>
Overall Type	<b>103</b>					
Mammary System	<b>107</b>					
Feet and Legs	<b>102</b>	Dairy Strength	<b>100</b>	Rump		<b>98</b>

**MAMMARY SYSTEM**

Udder Texture	<b>96</b>	Centre Ligament	<b>104</b>
Udder Depth	<b>105</b>	Teat Placement (front)	<b>101</b>
Fore Attachment	<b>103</b>	Teat Placement (rear)	<b>102</b>
Rear Attach. Height	<b>109</b>	Teat Length	<b>98</b>
Rear Attach. Width	<b>106</b>		

**DESCRIPTIVE**

Stature	<b>95</b>	Chest Width	<b>102</b>	Bone Quality	<b>100</b>
Angularity	<b>95</b>	Loin Strength	<b>99</b>	Foot Angle	<b>99</b>
Muzzle Width	<b>101</b>	Pin Width	<b>102</b>	Rear Set	<b>99</b>
Body Depth	<b>96</b>	Pin Set	<b>94</b>	Rear Leg Rear View	<b>107</b>

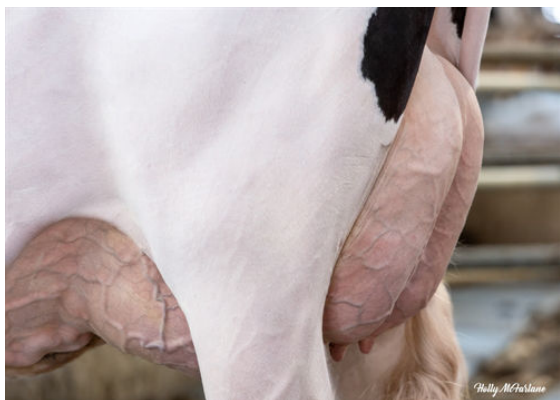
**AUXILIARY TRAITS**

**Immunity 106**

Milking Speed	<b>98</b>	Calf Immunity	<b>101</b>
Temperament	<b>101</b>	Survival	<b>108</b>
Likability	<b>104</b>	Liveweight	<b>96</b>
Feed Saved	<b>-83</b>	Somatic Cell Score	<b>178</b>
Gestation Length	<b>-6</b>	Daughter Fertility	<b>113</b>
Heat Tolerance	<b>95</b>	Mastitis Resistance	<b>108</b>
		Calving Ease	<b>105</b>



WESTCOAST MAHOMES SKY 12669  
 DAUGHTER



WESTCOAST MAHOMES SKY 12669  
 DAUGHTER