



BRABANTDALE ALLEYOOP  
 OUR-FAVOURITE SIDEKICK PAMELA GP-83-2YR-CHE  
 WALNUTLAWN SIDEKICK  
 OUR-FAVORITE STAYING POWER  
 WALNUTLAWN SOLOMON  
 OUR-FAVORITE VORACIOUS VG-87-2YR-USA

**BPI +233 Rel. 67% ASI 42**

HH1F HH2F HH3F HH4F HH5F HH6F HCDF HMWF ABV 24\*DEC

**HWI +216** Rel. 62% **SI +373** Rel. 64%

**PRODUCTION** G Herds G Daughters 77% Rel RIPS 0%

Milk kg	Fat kg	%Fat	Protein kg	%Prot
296	6	-0.09	8	0.00

**CONFORMATION** G Herds G Daughters 64% Rel

		90	95	AVG	105	110
Overall Type	112					
Mammary System	114					
Feet and Legs	107	Dairy Strength	100	Rump	101	

**MAMMARY SYSTEM**

Udder Texture	109	Centre Ligament	112
Udder Depth	108	Teat Placement (front)	111
Fore Attachment	113	Teat Placement (rear)	109
Rear Attach. Height	104	Teat Length	98
Rear Attach. Width	105		

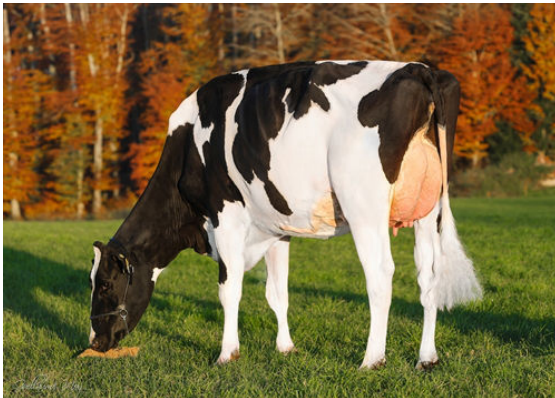
**DESCRIPTIVE**

Stature	111	Chest Width	92	Bone Quality	111
Angularity	107	Loin Strength	103	Foot Angle	104
Muzzle Width	95	Pin Width	105	Rear Set	101
Body Depth	102	Pin Set	96	Rear Leg Rear View	102

**AUXILIARY TRAITS**

**Immunity 89**

Milking Speed	103	Calf Immunity	102
Temperament	103	Survival	110
Likability	106	Liveweight	106
Feed Saved	-149	Somatic Cell Score	147
Gestation Length	-2	Daughter Fertility	102
Heat Tolerance	105	Mastitis Resistance	103
		Calving Ease	101



OUR-FAVOURITE SIDEKICK PAMELA  
DAM



OUR-FAVORITE UNLIMITED  
FOURTH DAM



OUR-FAVORITE UNLIMITED  
FOURTH DAM