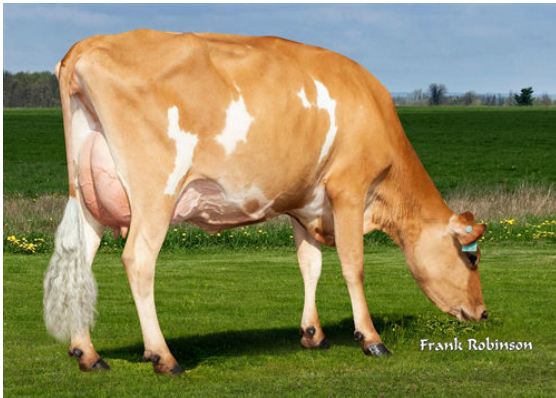




STEINHAUERS SAMSON LEMONHEAD  
 GOFF PHAROAH CIRCUS ACT EX-90%-3YR-USA  
 AHLEM HEADLINE PHAROAH 21795  
 GOFF VALENTINO 9595 VG-84%-4YR-USA  
 ALL LYNNS LOUIE VALENTINO  
 GOFF ACTION CHARLOTTE EX-90%-3YR-USA



PROGENESIS CRAZE CORD {6}  
 DAUGHTER



PROGENESIS CRAZE CORD {6}  
 DAUGHTER



RIVER VALLEY CIRCUS CRAZE DAUGHTERS  
 L to R - AHLEM CRAZE AUTUMN 52313, AHLEM CRAZE MARIE 52311,  
 FOREST CRAZE FRANCINE

**GJPI 64** BBR 100 JH1F JNSF

Reg. #: JEUSAM75341001 aAa: 126435 DMS: 561,126  
 Född: 10/12/2015 Kappa kasein: BB Beta kasein: A2A2

**PRODUKTION** 859 Bes 10219 Dtrr 99% Säkh MACE-G / 12-24

Mjök pund <b>166</b>	Fett pund <b>18</b>	Fett % <b>+0.05</b>	Protein pund <b>0</b>	Protein % <b>-0.03</b>
NM\$ <b>292</b>	CM\$ <b>290</b>	FM\$ <b>315</b>	GM\$ <b>223</b>	DWP\$ <b>305</b>

Döttrars medeltal (ME) Mjök **19,398 pund** Fett **956 pund** Protein **715 pund**

**FUNKTIONSEGENSKAPER** Immunitet **107**

Livslängd	<b>4.4</b>	Kalv Immunitet	<b>102</b>
Celltal	<b>2.99</b>	Insem. per dräktighet Kor	<b>0.6</b>
Dotterfertilitet	<b>0.0</b>	Insem. per dräktighet Kvigor	<b>0.1</b>
Överlevnad	<b>3.1</b>		
Överlevnad kvigor	<b>-1.3</b>		

**HELHETSINTRYCK** 484 Bes 4862 Dtrr 99% Säkh MACE-G / 12-24

PTAT	<b>1.9</b>
Jersey Juver Index	<b>17.8</b>

