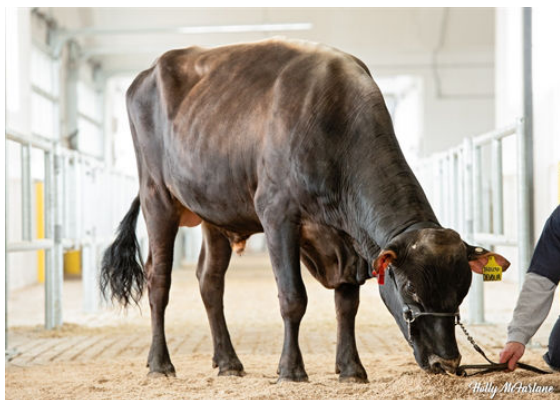




JX RIVER VALLEY CHIEF {6}  
 JX PROGENESIS BNCROFT DEJA {6} VG-85%-3YR-USA  
 AHLEM AXIS BANCROFT  
 JX PROGENESIS DAMSEL {5}  
 JX FARIA BROTHERS EUSEBIO {4}  
 JX GENERATIONS JAMMER DORA {5} VG-88%-6YR-USA



JX PROGENESIS BNCROFT DEJA {6}  
DAM



JX PROGENESIS BNCROFT DEJA {6}  
DAM



JX GENERATIONS JAMMER DORA {5}  
THIRD DAM

**GLPI +1954 PRO\$ 2093** JH1F JNSF

Reg. #: JE840M3209748320 aAa: 432561 DMS: 234,246  
 Född: 01/29/2020 Kappa kasein: BB Beta kasein: A2A2

PRODUKTION				GPA 24*DEC	
G Bes		G Dottrar		70% Säkh	
Mjök kg	Fett kg	Fett %	Protein kg	Protein %	
1584	77	-0.06	51	-0.13	

**FUNKTIONSEGENSKAPER** Immunitet 99

Livslängd	101	Kalv Immunitet	101
Celltal	102	Kalvningar F	102
Dotterfertilitet	96	Kalvningar MF	100
Hullbedömning	90	Mjökbarhet	106
Mastit resistens	101	Lynne	98
Laktationskurva	99	Resistens mot metabola sjukdomar	100

**HELHETSINTRYCK** GPA 24\*DEC

G Bes		G Dottrar		61% Säkh	
Helhetsintryck	5	Dairy Strength	-1		
Juvar	6	Kors	0		
Klövar & ben	6				

