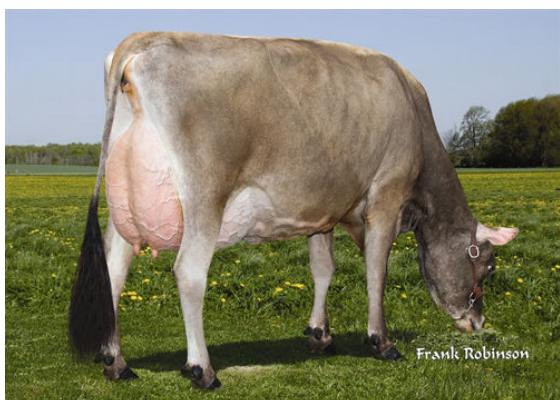




ALL LYNNS LOUIE VALENTINO
 REXLEA TIME IDOLYN EX-90-3E-CAN 5*
 LENCREST ON TIME
 REXLEA BOMBER IDEA EX-91-3E-CAN 4*
 WF BROOK BOMBER
 REXLEA PERIMITER IOLA EX-90-3E-CAN 3*



REXLEA TIME IDOLYN

Dam

GLPI +1245 PRO\$ 64 JH1F JNSF

Reg. #: JECANM11166757 aAa: 243615 DMS: 345
 Född: 10/04/2010 Kappa kasein: BB Beta kasein: A2A2

PRODUKTION 56 Bes 73 Dottrar 94% Säkh GEBV 24*DEC

| Mjök kg | Fett kg | Fett % | Protein kg | Protein % |
|---------|---------|--------|------------|-----------|
| 248 | -29 | -0.54 | 2 | -0.09 |

Döttrars medeltal (ME) Mjök **8,177 kg** Fett **381 kg** Protein **311 kg**

FUNKTIONSEGNSKAPER **Immunitet 102**

| | | | |
|------------------|-----|----------------------------------|-----|
| Livslängd | 102 | Kalv Immunitet | 101 |
| Celltal | 94 | Kalvningar F | 95 |
| Dotterfertilitet | 101 | Kalvningar MF | 104 |
| Hullbedömning | 99 | Mjökbarhet | 101 |
| Mastit resistens | 95 | Lynne | 104 |
| Laktationskurva | 104 | Resistens mot metabola sjukdomar | 103 |

HELHETSINTRYCK 41 Bes 63 Dottrar 85% Säkh GEBV 24*DEC

| | | | |
|----------------|---|-------------------|----|
| Helhetsintryck | 6 | Dairy Strength | -3 |
| Juver | 9 | Kors | 1 |
| Klövar & ben | 3 | GP eller bättre % | 71 |

