



WESTCOAST ALCOVE
 WALNUTLAWN LAMBDA BRIGHT VG-87-2YR-CAN
 FARNEAR DELTA-LAMBDA
 WALNUTLAWN ALLIGATOR BRIAR VG-88-3YR-CAN
 STANTONS ALLIGATOR
 WALNUTLAWN ABBOTT BREEZE EX-91-3E-CAN

GPA LPI +3801 PRO\$ 2289

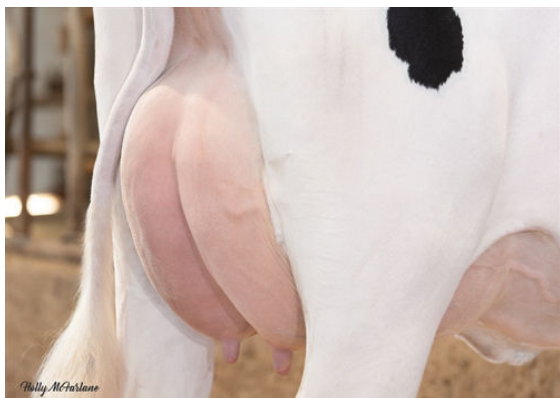
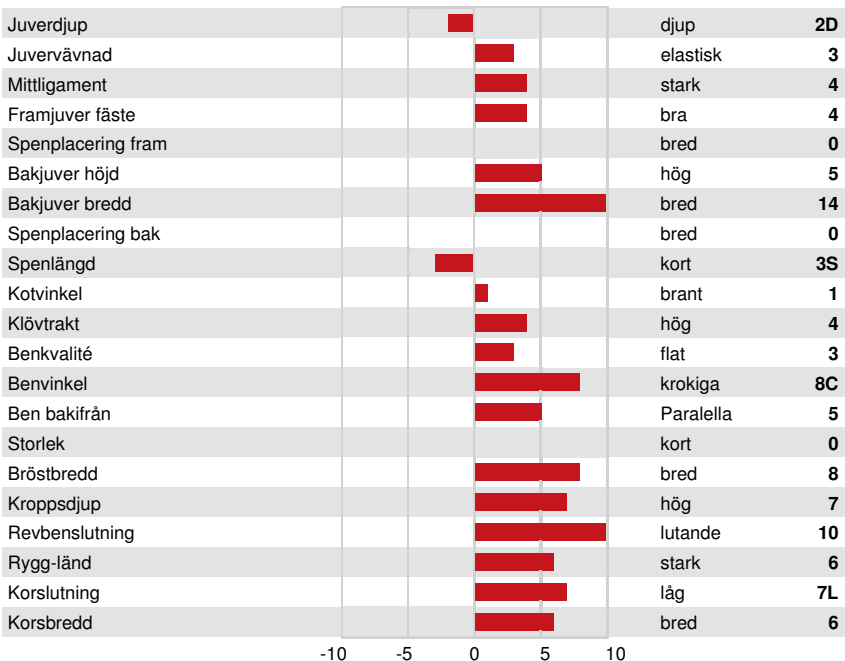
DPF RDF BLF CNF BYF MWF CVF HH1F HH2F HH3F HH4F HH5F HH6F HCDF HMWF

Reg. #: HOCANM14766540 aAa: 231465 DMS:
 Född: 08/02/2023 Kappa kasein: AA Beta kasein: A2A2

| PRODUKTION | | | G Bes | G Dottrar | 85% Säkh | GPA 24*DEC | |
|-----------------|----------------|--------------------|-------|-----------|----------|------------|-----------|
| Mjök kg | Fett kg | Fett % | | | | Protein kg | Protein % |
| 1194 | 97 | +0.43 | | | | 65 | +0.19 |
| Foderomvandling | Underhållskrav | Metan Effektivitet | | | | | |
| 101 | 94 | 97 | | | | | |

| FUNKTIONSEGENSKAPER | | Immunitet | 100 |
|---------------------|-----|----------------------------------|-----|
| Livslängd | 106 | Kalv Immunitet | 103 |
| Celltal | 98 | Kalvningar F | 100 |
| Dotterfertilitet | 103 | Kalvningar MF | 101 |
| Hullbedömning | 100 | Mjökbarhet | 97 |
| Mastit resistens | 98 | Lynne | 99 |
| Laktationskurva | 97 | Resistens mot metabola sjukdomar | 100 |

| HELHETSINTRYCK | | G Bes | G Dottrar | 82% Säkh | GPA 24*DEC | |
|----------------|----|----------------|-----------|----------|------------|--|
| Helhetsintryck | 14 | Dairy Strength | 13 | | | |
| Juvar | 6 | Kors | 10 | | | |
| Klövar & ben | 13 | | | | | |



WALNUTLAWN LAMBDA BRIGHT
DAM



WALNUTLAWN LAMBDA BRIGHT
DAM



WALNUTLAWN ABBOTT BREEZE
THIRD DAM