



CLAYNOOK ZOAR
 WALNUTLAWN LAMBDA BRIGHT VG-87-2YR-CAN
 FARNEAR DELTA-LAMBDA
 WALNUTLAWN ALLIGATOR BRIAR VG-88-3YR-CAN
 STANTONS ALLIGATOR
 WALNUTLAWN ABBOTT BREEZE EX-91-3E-CAN

GPA LPI +3617 PRO\$ 2173

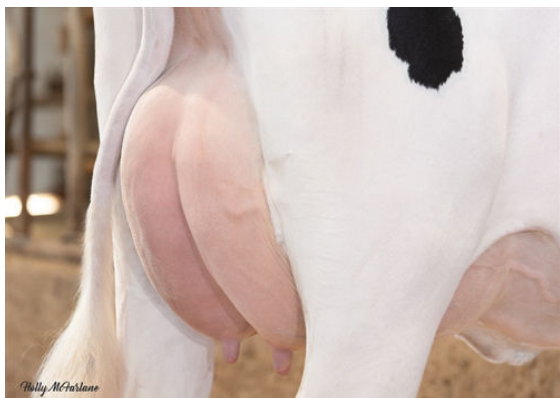
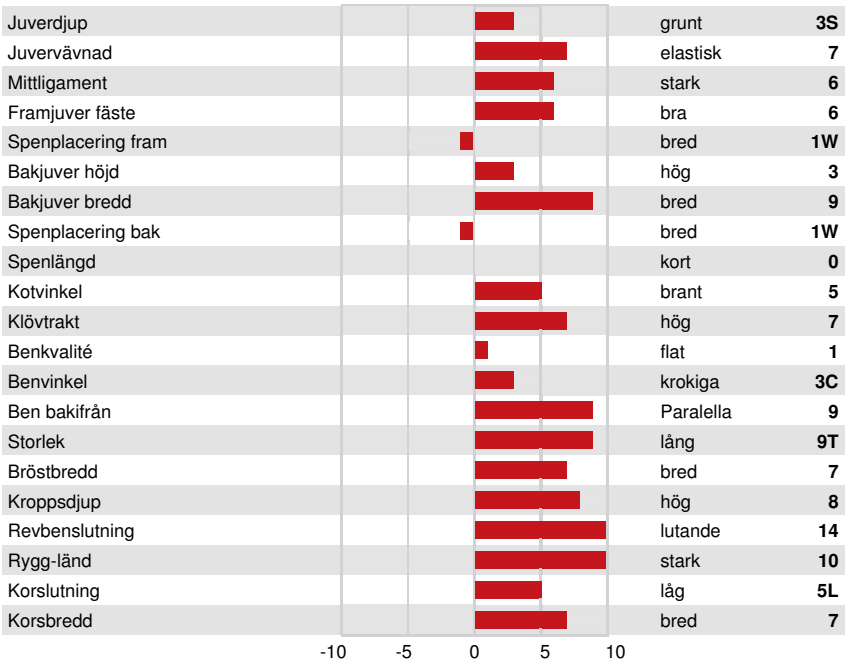
DPF RDF BLF CNF BYF MWF CVF HH1F HH2F HH3F HH4F HH5F HH6F HCDF HMWF

Reg. #: HOCANM14766404 aAa: 234156 DMS:
 Född: 05/24/2023 Kappa kasein: BB Beta kasein: A1A2

| PRODUKTION | | | GPA 24*DEC | |
|-----------------|----------------|--------------------|------------|-----------|
| Mjök kg | Fett kg | Fett % | Protein kg | Protein % |
| 1330 | 78 | +0.19 | 70 | +0.19 |
| Foderomvandling | Underhållskrav | Metan Effektivitet | | |
| 103 | 92 | 101 | | |

| FUNKTIONSEGENSKAPER | | Immunitet |
|---------------------|-----|--------------------------------------|
| Livslängd | 102 | Kalv Immunitet 99 |
| Celltal | 98 | Kalvningar F 99 |
| Dotterfertilitet | 100 | Kalvningar MF 103 |
| Hullbedömning | 95 | Mjökbarhet 102 |
| Mastit resistens | 100 | Lynne 102 |
| Laktationskurva | 98 | Resistens mot metabola sjukdomar 103 |

| HELHETSINTRYCK | | GPA 24*DEC |
|----------------|----|-------------------|
| Helhetsintryck | 13 | Dairy Strength 14 |
| Juvar | 8 | Kors 9 |
| Klövar & ben | 8 | |



WALNUTLAWN LAMBDA BRIGHT
DAM



WALNUTLAWN LAMBDA BRIGHT
DAM



WALNUTLAWN ABBOTT BREEZE
THIRD DAM