



SILVERRIDGE V TIMBERLAKE
 PROGENESIS ROBSON BARBARELLA
 BOMAZ ROBSON
 PROGENESIS DENVER BETSY VG-88-3YR-CAN 5*
 MR MOGUL DENVER 1426
 PES009 SUPERSIRE BREANNE 3*

GLPI +3223 PRO\$ 1881

DPF RDF BLF CNF XIF BYF MWF CVF HH1F HH2F HH3F HH4F HH5F HH6F HCDF HMWF

Reg. #: HOCANM13353688 aAa: 435216 DMS:
 Född: 03/26/2019 Kappa kasein: AA Beta kasein: A2A2

PRODUKTION 37 Bes 102 Dottrar 94% Säkh GEBV 24*DEC

| | | | | |
|------------------------------|------------------------------|---------------------------------|-------------------------|---------------------------|
| Mjök kg 1685 | Fett kg 73 | Fett % +0.05 | Protein kg 87 | Protein % +0.22 |
| Foderomvandling 97 | Underhållskrav 100 | Metan Effektivitet 89 | | |

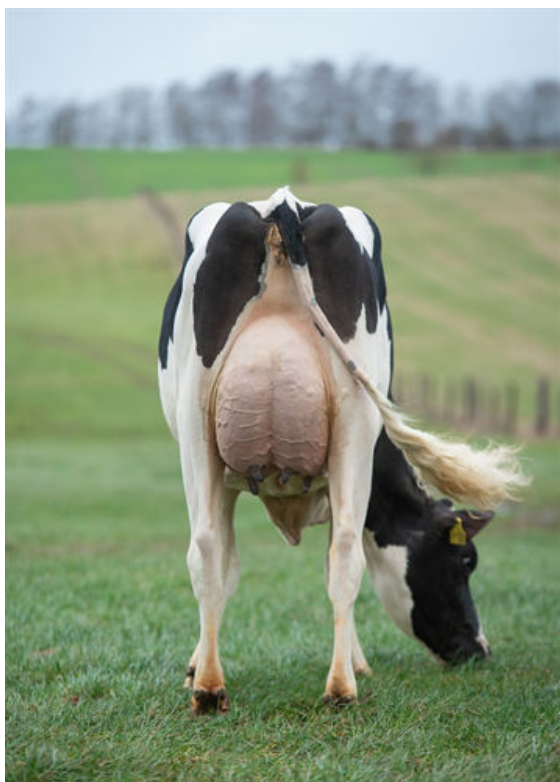
Döttrars medeltal (ME) Mjök **12,805 kg** Fett **521 kg** Protein **424 kg**

FUNKTIONSEGENSKAPER Immunitet **99**

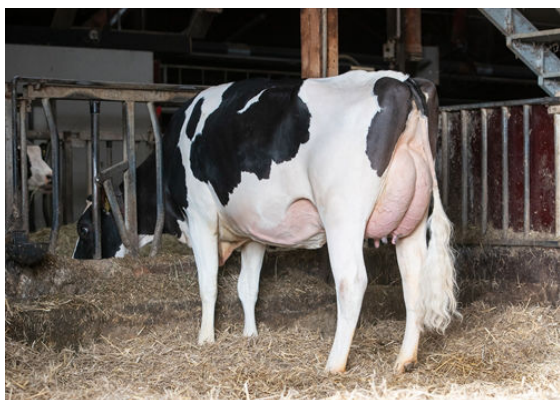
| | | | |
|------------------|------------|----------------------------------|------------|
| Livslängd | 101 | Kalv Immunitet | 103 |
| Celltal | 101 | Kalvningar F | 103 |
| Dotterfertilitet | 93 | Kalvningar MF | 104 |
| Hullbedömning | 96 | Mjölklarhet | 95 |
| Mastit resistens | 103 | Lynne | 104 |
| Laktationskurva | 90 | Resistens mot metabola sjukdomar | 101 |

HELHETSINTRYCK 36 Bes 88 Dottrar 91% Säkh GEBV 24*DEC

| | | | |
|----------------|-----------|-------------------|-----------|
| Helhetsintryck | 3 | Dairy Strength | 1 |
| Juvar | 7 | Kors | 2 |
| Klövar & ben | -6 | GP eller bättre % | 51 |



GAH PAOLA
DAUGHTER



GAH PAOLA
DAUGHTER

