



SANDY-VALLEY-I PENMANSHIP
 VIEW-HOME DRMAN WSCONSIN VG-88-3YR-CAN 8*
 VAL-BISSON DOORMAN
 PINE-TREE 2149ROBST 4846 VG-87-7YR-USA DOM 3*
 ROYLANE SOCRA ROBUST
 PINE-TREE ZENITH SHEEN VG-87-3YR-USA DOM

GLPI +2962 PRO\$ 1141

VG DPF RDF BLF CNF BYF MWC CVF HH1F HH2F HH3F HH4F HH5C HH6F HCDF HMWC

Reg. #: HOCANM12283318 aAa: 126345 DMS: 123,135
 Född: 12/05/2015 Kappa kasein: AB Beta kasein: A2A2

PRODUKTION 69 Bes 234 Dottrar 97% Säkh GEBV 24*DEC

Mjolk kg	Fett kg	Fett %	Protein kg	Protein %
222	35	+0.22	49	+0.33
Foderomvandling	Underhållskrav	Metan Effektivitet		
102	103	102		

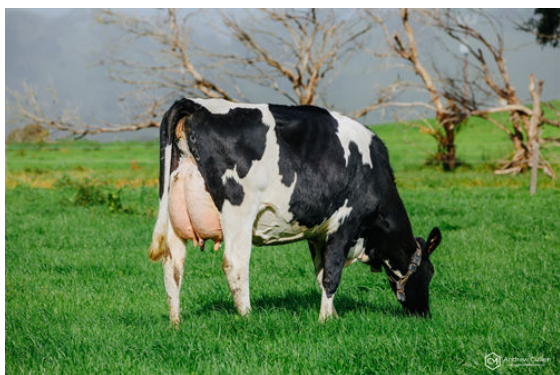
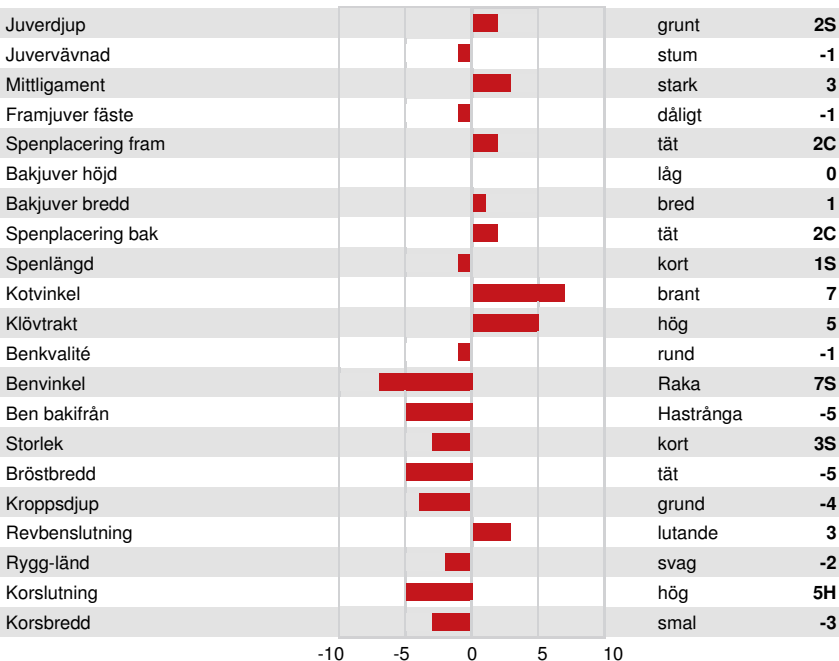
Döttrars medeltal (ME) Mjolk 12,999 kg Fett 533 kg Protein 441 kg

FUNKTIONSEGENSKAPER Immunitet 105

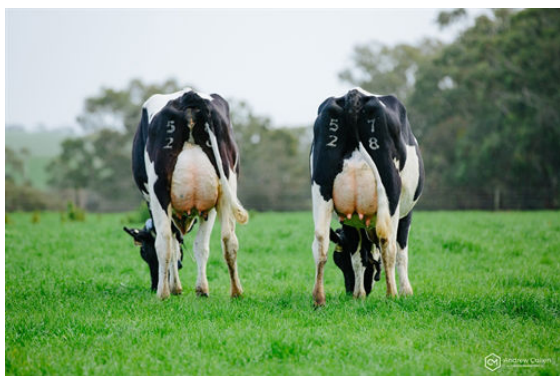
Livslängd	104	Kalv Immunitet	101
Celltal	100	Kalvningar F	106
Dotterfertilitet	102	Kalvningar MF	102
Hullbedömning	101	Mjolkbarhet	97
Mastit resistens	103	Lynne	101
Laktationskurva	107	Resistens mot metabola sjukdomar	102

HELHETSINTRYCK 66 Bes 157 Dottrar 94% Säkh GEBV 24*DEC

Helhetsintryck	-3	Dairy Strength	-3
Juvel	1	Kors	-6
Klövar & ben	-5	GP eller bättre %	66



ROCKWELLA FARM PERSEUS JEWEL



PERSEUS DAUGHTER GROUP

L-R KREZANDA PERSEUS DING 3 - KREZANDA PERSEUS DING



PERSEUS DAUGHTER GROUP

L-R KREZANDA PERSEUS DING 3, KREZANDA PERSEUS DING, ROCKWELLA PERSEUS DIXIE, ROCKWELLA FARM PERSEUS JEWEL