



ROCKYMOUNTAIN LOTTOMAX
 SIEMERS S-SIRE ROZANNE VG-86-2YR-USA
 SEAGULL-BAY SUPERSIRE
 SIEMERS WINDBK ROZANNE EX-93-5YR-USA
 GILLETTE WINDBROOK
 CHERRY CREST MANOMAN ROZ EX-91-5YR-USA

GMACE LPI +3004 PRO\$ 1372

DPF RDF BLF CNF BYF CVF HH1F HH2F HH3F HH4F HH5F HH6F HCDF HMWF

Reg. #: HO840M3125519695 aAa: 432615 DMS: 234
 Född: 12/01/2014 Kappa kasein: AA Beta kasein: A2A2

PRODUKTION 64 Bes 409 Dottrar 93% Säkh GMACE 24*DEC

Mjök kg	Fett kg	Fett %	Protein kg	Protein %
1751	93	+0.19	46	-0.11
Foderomvandling	Underhållskrav	Metan Effektivitet		
103	103	102		

FUNKTIONSEGENSKAPER

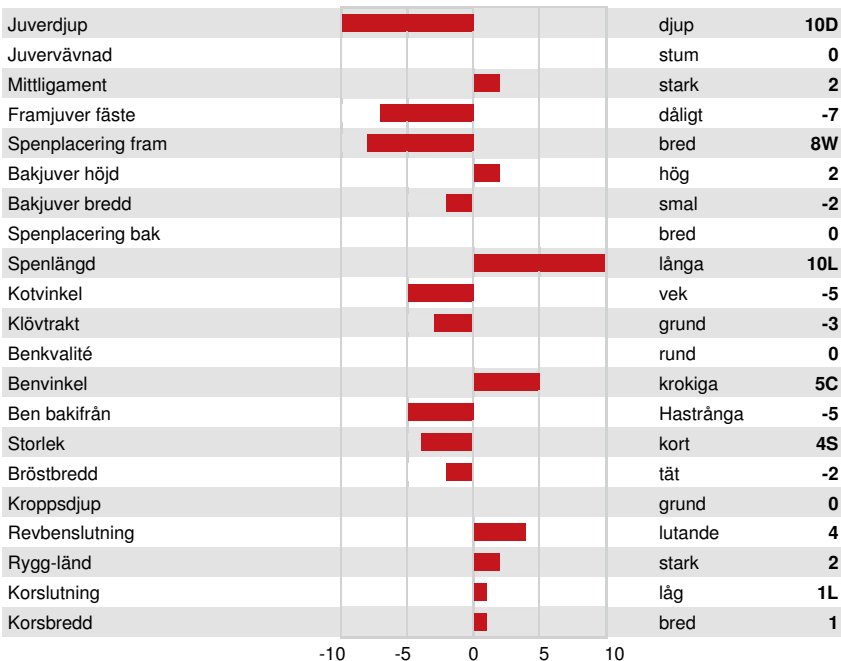
Immunitet 87

Livslängd	102	Kalv Immunitet	90
Celltal	96	Kalvningar F	99
Dotterfertilitet	94	Kalvningar MF	102
Hullbedömning	97	Mjökbarhet	100
Mastit resistens	97	Lynne	103
Laktationskurva	95	Resistens mot metabola sjukdomar	95

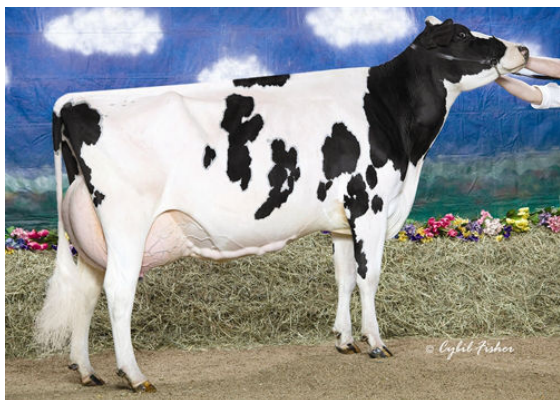
HELHETSINTRYCK

27 Bes 120 Dottrar 88% Säkh GMACE 24*DEC

Helhetsintryck	-2	Dairy Strength	2
Juvel	-4	Kors	3
Klövar & ben	-2		



WHITTIER-FARMS HE REBECA
 FOURTH DAM



WHITTIER-FARMS OUTSIDE ROZ
 FIFTH DAM



CHERRY CREST MANOMAN ROZ
 THIRD DAM