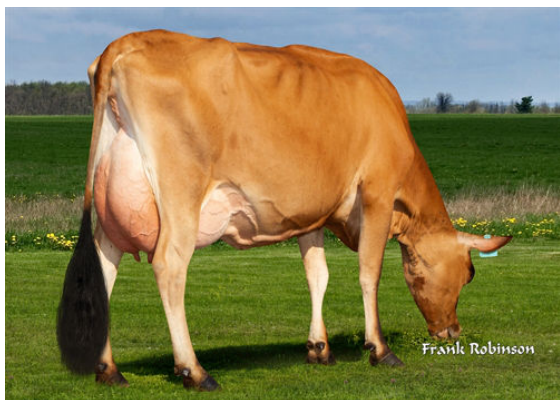




DP NXLEVEL
 DP AXIS MCKENNA 1983 EX-90%-5YR-USA
 SUGAR GROVE VALENTINO AXIS
 DP LOUIE MYALEAN 853 EX-90%-4YR-USA
 TOLLENAARS IMPULS LOUIE 260
 DP MECCA MYRTLEAN 9249 EX-90%-4YR-USA



AHLEM SKYLER SKITTLES 56480-P
 DAUGHTER



JX VIERRA DORY {4}
 DAUGHTER



JX VIERRA LADYGAGA {6}
 DAUGHTER

GJPI 86 BBR 100 JH1F JNSF

Reg. #: JECANM12672209 aAa: 426351 DMS: 345
 Born: 11/08/2016 Kappa Casein: AB Beta Casein: A2A2

PRODUCTION 155 Herds 2413 Dtrs 99% Rel MACE-G / 12-24

Milk lbs 1017	Fat lbs 92	Fat % +0.21	Protein lbs 29	Protein % -0.04
NM\$ 481	CM\$ 477	FM\$ 494	GM\$ 389	DWP\$ 723

Daughter Average (ME) Milk **19,887 lbs** Fat **1,019 lbs** Protein **735 lbs**

HEALTH & REPRODUCTION Immunity 104

Productive Life	1.4	Calf Immunity	107
Somatic Cell Score	3.17	Cow Conception Rate	-3.2
Daughter Pregnancy Rate	-3.1	Heifer Conception Rate	2.2
Livability	-1.0		
Heifer Livability	-0.2		

CONFORMATION 96 Herds 899 Dtrs 99% Rel MACE-G / 12-24

PTAT	0.6
Jersey Udder Index	11.8

