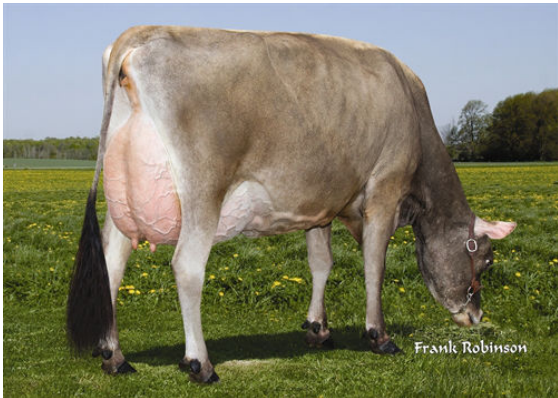




ALL LYNNS LOUIE VALENTINO
 REXLEA TIME IDOLYN EX-90-3E-CAN 5*
 LENCREST ON TIME
 REXLEA BOMBER IDEA EX-91-3E-CAN 4*
 WF BROOK BOMBER
 REXLEA PERIMITER IOLA EX-90-3E-CAN 3*



REXLEA TIME IDOLYN

Dam

GJPI -49 BBR 100 JH1F JNSF

Reg. #: JECANM11166757 aAa: 243615 DMS: 345
 Born: 10/04/2010 Kappa Casein: BB Beta Casein: A2A2

PRODUCTION 76 Herds 117 Dtrs 91% Rel MACE-G / 12-24

Milk lbs	Fat lbs	Fat %	Protein lbs	Protein %
-360	-37	-0.10	-10	+0.02
NM\$ -187	CM\$ -191	FM\$ -184	GM\$ -204	DWP\$

HEALTH & REPRODUCTION Immunity 102

Productive Life	0.0	Calf Immunity	101
Somatic Cell Score	3.20	Cow Conception Rate	-1.2
Daughter Pregnancy Rate	-0.4	Heifer Conception Rate	0.2
Livability	-0.6		
Heifer Livability	0.2		

CONFORMATION 51 Herds 80 Dtrs 86% Rel MACE-G / 12-24

PTAT	0.9
Jersey Udder Index	16.9

