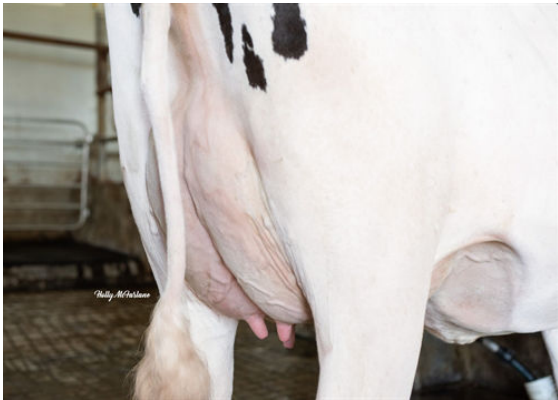




BOMAZ CABOT
 FB LULU ACHV VEGAS EX-90-6YR-CAN 1*
 ABS ACHIEVER
 STUNNING-M MONTROSS LULU VG-87-2YR-USA DOM
 BACON-HILL MONTROSS
 BUTLERVIEW UNO LIVA 2074 VG-85-3YR-USA



FB LULU ACHV VEGAS
DAM



FB LULU ACHV VEGAS
DAM

GTPI 2841

TD TR TL TY TV 99%-I HH1F HH2F HH3F HH4F HH5C HH6F HCDF HMWF

Reg. #: HOCANM13353893 aAa: 351462 DMS: 456,561
 Born: 05/28/2019 Kappa Casein: BE Beta Casein: A1A2

PRODUCTION 17 Herds 402 Dtrs 98% Rel CDCB-G / 12-24

| | | | | |
|-------------------------------|----------------------|--------------------------|--------------------------|---------------------------|
| Milk lbs 892 | Fat lbs 98 | Fat % +0.24 | Protein lbs 45 | Protein % +0.06 |
| NM\$ 903 | CM\$ 922 | FM\$ 805 | GM\$ 801 | DWP\$ 1142 |
| Feed Efficiency 224 | RFI 34 | Feed Saved -55 | Methane Efficiency | |

Daughter Average (ME) Milk **28,059 lbs** Fat **1,218 lbs** Protein **936 lbs**

HEALTH & REPRODUCTION Immunity **114**

| | | | |
|-------------------------|-------------|------------------------|---------------------|
| Productive Life | 5.6 | Calf Immunity | 112 |
| Somatic Cell Score | 2.59 | Cow Conception Rate | -0.8 |
| Daughter Pregnancy Rate | -1.3 | Heifer Conception Rate | 0.7 |
| Livability | 2.9 | Sire Calving Ease | 1.8% 84% Rel |
| Heifer Livability | 0.8 | Daughter Calving Ease | 2.0% 74% Rel |
| Fertility Index | -0.6 | Sire Stillbirth | 4.9% |
| | | Daughter Stillbirth | 4.9% |

CONFORMATION G Herds G Dtrs 81% Rel HAUSA-G / 12-24

| | | | |
|-----------------------|-------------|-----------------|--------------|
| PTAT | 0.62 | Body Composite | 0.14 |
| Udder Composite | 0.97 | Dairy Composite | -0.30 |
| Feet & Legs Composite | 0.36 | | |

