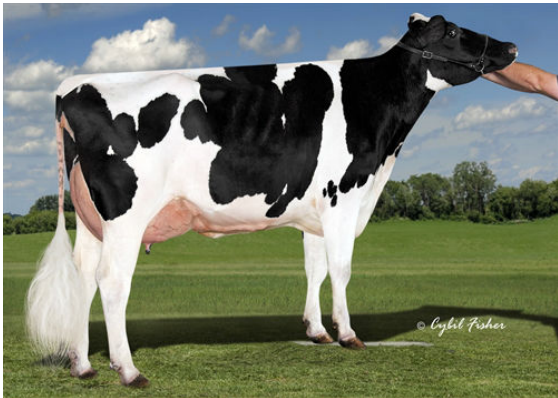




SANDY-VALLEY CHALLENGER  
 COOKIECUTTER SUPR HAZAJO EX-90-4YR-USA  
 UECKER SUPERSIRE JOSUPER  
 COOKIECUTTER MN HAZELLE EX-92-2E-USA  
 BACON-HILL MONTROSS  
 COOKIECUTTER EPIC HAZEL EX-92-7YR-USA



COOKIECUTTER SUPR HAZAJO  
DAM



COOKIECUTTER MOM HALO  
FOURTH DAM



COOKIECUTTER GLD HOLLER  
FIFTH DAM

**GTPI 2986**

TD TR TL TY TV 99%-I HH1F HH2F HH3F HH4F HH5F HH6F HCDF HMWF

Reg. #: HO840M3139198246 aAa: 423651 DMS: 234,345  
 Born: 10/04/2018 Kappa Casein: BE Beta Casein: A1A2

PRODUCTION		83 Herds	468 Dtrs	97% Rel	MACE-G / 12-24	
Milk lbs	Fat lbs			Fat %	Protein lbs	Protein %
1942	85			+0.04	67	+0.02
NM\$ 931	CM\$ 942			FM\$ 879	GM\$ 917	DWP\$ 900
Feed Efficiency	RFI			Feed Saved	Methane Efficiency	
256	30			59	103	

Daughter Average (ME) Milk 27,906 lbs Fat 1,168 lbs Protein 906 lbs

HEALTH & REPRODUCTION		Immunity 99	
Productive Life	4.4	Calf Immunity	94
Somatic Cell Score	2.68	Cow Conception Rate	0.7
Daughter Pregnancy Rate	0.3	Heifer Conception Rate	-1.8
Livability	-0.5	Sire Calving Ease	2.0% 92% Rel
Heifer Livability	0.0	Daughter Calving Ease	2.3% 81% Rel
Fertility Index	0.2	Sire Stillbirth	6.4%
		Daughter Stillbirth	6.0%

CONFORMATION		35 Herds	135 Dtrs	93% Rel	MACE / 12-24	
PTAT	1.60			Body Composite	-0.58	
Udder Composite	2.41			Dairy Composite	-0.02	
Feet & Legs Composite	0.02					

