



PROGENESIS FORTUNE
 SANDY-VALLEYERNITY EX-92-5YR-USA DOM
 EDG RUBICON
 SANDY-VALLEY MORGAN ERA GP-83-2YR-USA GMD DOM
 S-S-I BOOKEM MORGAN
 SANDY-VALLEY RBS EMERALD VG-88-6YR-USA GMD

GTPI 2633

TD TR TL TY MWT TV 99%-I HH1F HH2F HH3F HH4F HH5F HH6F HCDF HMWF

Reg. #: HO840M3140616308 aAa: 432516 DMS: 345
 Born: 05/26/2017 Kappa Casein: AA Beta Casein: A1A2

PRODUCTION 463 Herds 2851 Dtrs 99% Rel MACE-G / 12-24

Milk lbs 1419	Fat lbs 37	Fat % -0.06	Protein lbs 46	Protein % 0.00
NM\$ 667	CM\$ 674	FM\$ 643	GM\$ 662	DWP\$ 596
Feed Efficiency 152	RFI -54	Feed Saved 125	Methane Efficiency 100	

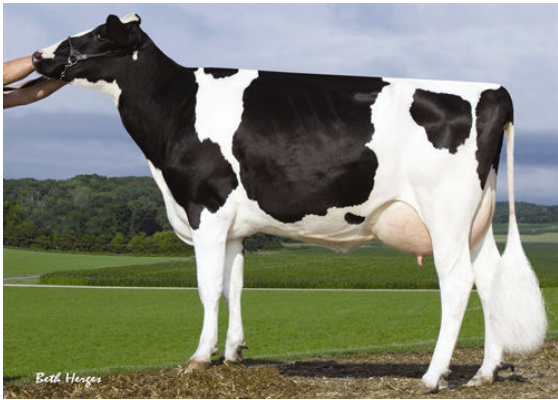
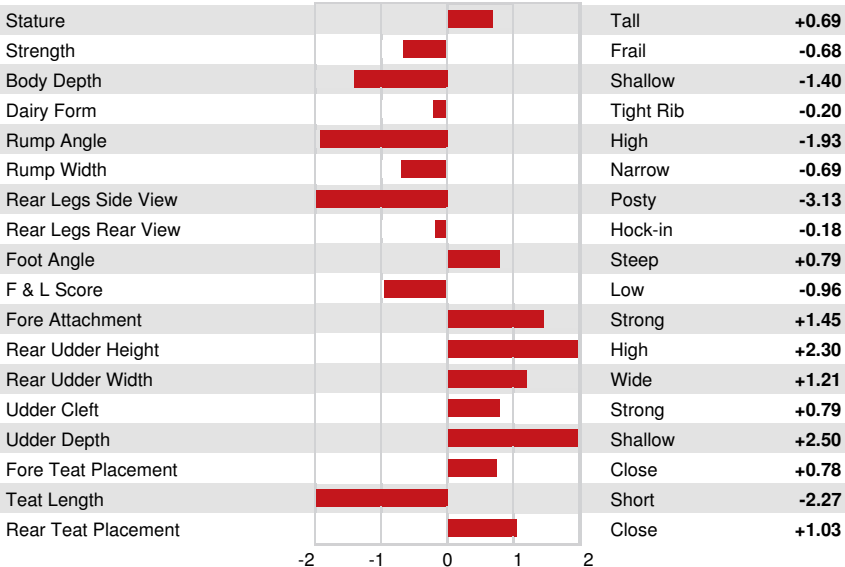
Daughter Average (ME) Milk **26,637 lbs** Fat **1,058 lbs** Protein **873 lbs**

HEALTH & REPRODUCTION Immunity **98**

Productive Life	4.3	Calf Immunity	100
Somatic Cell Score	2.74	Cow Conception Rate	2.1
Daughter Pregnancy Rate	1.1	Heifer Conception Rate	0.7
Livability	-0.1	Sire Calving Ease	2.5% 96% Rel
Heifer Livability	0.8	Daughter Calving Ease	1.7% 87% Rel
Fertility Index	1.8	Sire Stillbirth	5.4%
		Daughter Stillbirth	3.7%

CONFORMATION 367 Herds 1769 Dtrs 98% Rel MACE / 12-24

PTAT	0.59	Body Composite	-0.47
Udder Composite	1.57	Dairy Composite	-1.02
Feet & Legs Composite	-1.09		



SANDY-VALLEY PLANE SAPPHIRE
 FOURTH DAM