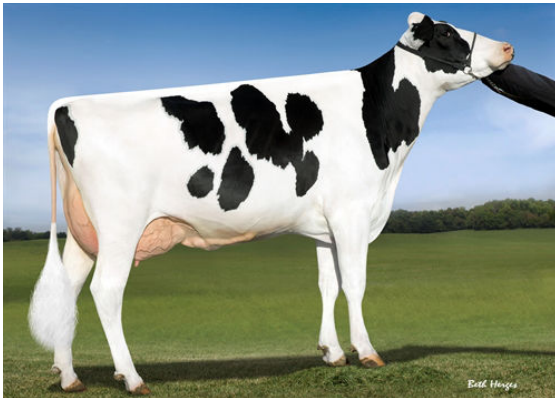




SILVERRIDGE V IMAX
 PINE-TREE JEDI 9882FARIA 4*
 S-S-I MONTROSS JEDI
 OCD SUPERSIRE 9882 VG-86-2YR-USA DOM
 SEAGULL-BAY SUPERSIRE
 OCD ROBUST SHIMMER EX-90-2E-USA DOM



OCD SUPERSIRE 9882
 GRANDDAM



AMMON-PEACHEY SHANA
 FOURTH DAM



AMMON-PEACHEY SHANA
 FOURTH DAM

GTPI 2611

TD TR TL TY MWT TV 99%-I HH1F HH2F HH3F HH4F HH5F HH6F HCDF HMWF

Reg. #: HOCANM12754623 aAa: 423516 DMS: 246
 Born: 08/20/2017 Kappa Casein: AB Beta Casein: A1A1

PRODUCTION		G Herds	G Dtrs	83% Rel	CDCB-G / 12-24				
Milk lbs	1806	Fat lbs	61	Fat %	-0.03	Protein lbs	55	Protein %	-0.01
NM\$	637	CM\$	636	FM\$	633	GM\$	544	DWP\$	402
Feed Efficiency	195	RFI	-218	Feed Saved	34	Methane Efficiency	93		

HEALTH & REPRODUCTION

Immunity 95

Productive Life	2.5	Calf Immunity	97
Somatic Cell Score	3.02	Cow Conception Rate	-1.7
Daughter Pregnancy Rate	-3.0	Heifer Conception Rate	1.8
Livability	1.0	Sire Calving Ease	2.2% 64% Rel
Heifer Livability	0.1	Daughter Calving Ease	1.8% 63% Rel
Fertility Index	-1.2	Sire Stillbirth	5.5%
		Daughter Stillbirth	5.0%

CONFORMATION

G Herds G Dtrs 81% Rel HAUSA-G / 12-24

PTAT	1.35	Body Composite	1.20
Udder Composite	1.06	Dairy Composite	1.26
Feet & Legs Composite	-0.30		

