



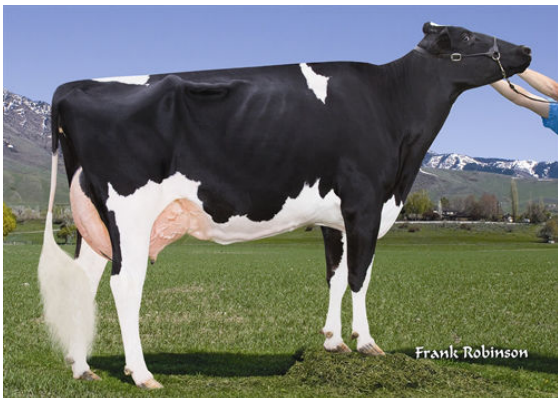
STANTONS DRAFTPICK
 LADYS-MANOR SSH SEASHORE VG-87-2YR-CAN 2*
 COGENT SUPERSHOT
 SEAGULL-BAY MOGUL 1725 EX-90-4YR-USA
 MOUNTFIELD SSI DCY MOGUL
 T-C-G OBSERVER MAY VG-86-2YR-USA



SEAGULL-BAY MOGUL 1725
 GRANDDAM



T-C-G OBSERVER MAY
 THIRD DAM



T-C-G SHOTTLE MINNOW
 FOURTH DAM

GTPI 2458

VG-CAN TD TR TL TY MWT TV 99%-NA HH1F HH2F HH3F HH4F HH5F HH6F HCDF HMWF

Reg. #: HOCANM12371228 aAa: 342516 DMS: 234,246
 Born: 04/30/2016 Kappa Casein: AB Beta Casein: A2A2

PRODUCTION 29 Herds 86 Dtrs 94% Rel CDCB-G / 12-24

Milk lbs 1494	Fat lbs 44	Fat % -0.05	Protein lbs 46	Protein % 0.00
NM\$ 568	CM\$ 570	FM\$ 559	GM\$ 520	DWP\$ 531
Feed Efficiency 171	RFI -105	Feed Saved 199	Methane Efficiency 95	

Daughter Average (ME) Milk **27,562 lbs** Fat **1,056 lbs** Protein **888 lbs**

HEALTH & REPRODUCTION Immunity **97**

Productive Life	2.7	Calf Immunity	100
Somatic Cell Score	2.89	Cow Conception Rate	-1.2
Daughter Pregnancy Rate	-1.4	Heifer Conception Rate	-0.7
Livability	-1.1	Sire Calving Ease	2.3% 85% Rel
Heifer Livability	-1.0	Daughter Calving Ease	1.9% 75% Rel
Fertility Index	-0.8	Sire Stillbirth	5.7%
		Daughter Stillbirth	4.2%

CONFORMATION G Herds G Dtrs 81% Rel HAUSA-G / 12-24

PTAT	0.32	Body Composite	-0.61
Udder Composite	0.28	Dairy Composite	-0.40
Feet & Legs Composite	0.14		

