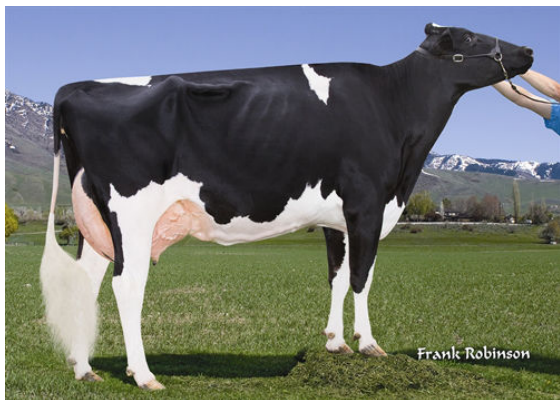




SEAGULL-BAY MOGUL 1725  
GRANDDAM



T-C-G OBSERVER MAY  
THIRD DAM



T-C-G SHOTTLE MINNOW  
FOURTH DAM



SANDY-VALLEY AFTERBURNER  
LADYS-MANOR SSH SEASHORE VG-87-2YR-CAN 2\*  
COGENT SUPERSHOT  
SEAGULL-BAY MOGUL 1725 EX-90-4YR-USA  
MOUNTFIELD SSI DCY MOGUL  
T-C-G OBSERVER MAY VG-86-2YR-USA

**GTPI 2490**

TD TR TL TY MWT TV 99%-NA HH1F HH2F HH3F HH4F HH5F HH6F HCDF HMWF

Reg. #: HOCANM12371213 aAa: 243615 DMS: 345  
Born: 04/16/2016 Kappa Casein: AB Beta Casein: A2A2

**PRODUCTION** 63 Herds 392 Dtrs 95% Rel MACE-G / 12-24

Milk lbs <b>1769</b>	Fat lbs <b>39</b>	Fat % <b>-0.11</b>	Protein lbs <b>39</b>	Protein % <b>-0.06</b>
NM\$ <b>531</b>	CM\$ <b>523</b>	FM\$ <b>595</b>	GM\$ <b>479</b>	DWP\$ <b>394</b>
Feed Efficiency <b>134</b>	RFI <b>-57</b>	Feed Saved <b>38</b>	Methane Efficiency <b>100</b>	

Daughter Average (ME) Milk **28,912 lbs** Fat **1,085 lbs** Protein **907 lbs**

**HEALTH & REPRODUCTION** Immunity **96**

Productive Life	<b>3.2</b>	Calf Immunity	<b>100</b>
Somatic Cell Score	<b>2.95</b>	Cow Conception Rate	<b>-0.8</b>
Daughter Pregnancy Rate	<b>-0.6</b>	Heifer Conception Rate	<b>0.6</b>
Livability	<b>1.2</b>	Sire Calving Ease	<b>1.8%</b> 86% Rel
Heifer Livability	<b>-0.3</b>	Daughter Calving Ease	<b>1.9%</b> 75% Rel
Fertility Index	<b>-0.2</b>	Sire Stillbirth	<b>5.4%</b>
		Daughter Stillbirth	<b>4.0%</b>

**CONFORMATION** G Herds G Dtrs 85% Rel MACE / 12-24

PTAT	<b>1.09</b>	Body Composite	<b>0.11</b>
Udder Composite	<b>0.80</b>	Dairy Composite	<b>0.97</b>
Feet & Legs Composite	<b>0.27</b>		

Stature			Tall	<b>+1.20</b>
Strength			Strong	<b>+0.32</b>
Body Depth			Deep	<b>+0.59</b>
Dairy Form			Open Rib	<b>+1.64</b>
Rump Angle			High	<b>-0.11</b>
Rump Width			Wide	<b>+1.95</b>
Rear Legs Side View			Posty	<b>-1.06</b>
Rear Legs Rear View			Straight	<b>+0.63</b>
Foot Angle			Steep	<b>+0.67</b>
F & L Score			High	<b>+0.49</b>
Fore Attachment			Strong	<b>+0.63</b>
Rear Udder Height			High	<b>+1.65</b>
Rear Udder Width			Wide	<b>+1.28</b>
Udder Cleft			Strong	<b>+0.57</b>
Udder Depth			Shallow	<b>+0.46</b>
Fore Teat Placement			Close	<b>+0.74</b>
Teat Length			Long	<b>+0.06</b>
Rear Teat Placement			Close	<b>+0.79</b>

-2 -1 0 1 2