



WILLSBRO ABBOTT
 PROGENESIS SUPERSHOT KASSIDY VG-87-2YR-USA 6*
 COGENT SUPERSHOT
 LOOKOUT PESCE PONDE KREED
 MOUNTFIELD SSI DCY MOGUL
 MS C-HAVEN OMAN KOOL VG-88-6YR-CAN 10*

GTPI 2631

VG-CAN TD TR TL TY MWT TV HH1F HH2F HH3F HH4F HH5F HH6F HCDC HMWF

Reg. #: HOCANM12608917 aAa: 135264 DMS: 126
 Born: 07/25/2016 Kappa Casein: BB Beta Casein: A2A2

PRODUCTION		1259 Herds	5064 Dtrs	96% Rel	MACE-G / 12-24	
Milk lbs	Fat lbs			Fat %	Protein lbs	Protein %
1601	63			+0.01	53	+0.01
NM\$ 604	CM\$ 611			FM\$ 575	GM\$ 563	DWP\$
Feed Efficiency	RFI			Feed Saved	Methane Efficiency	
186	79			-38	100	

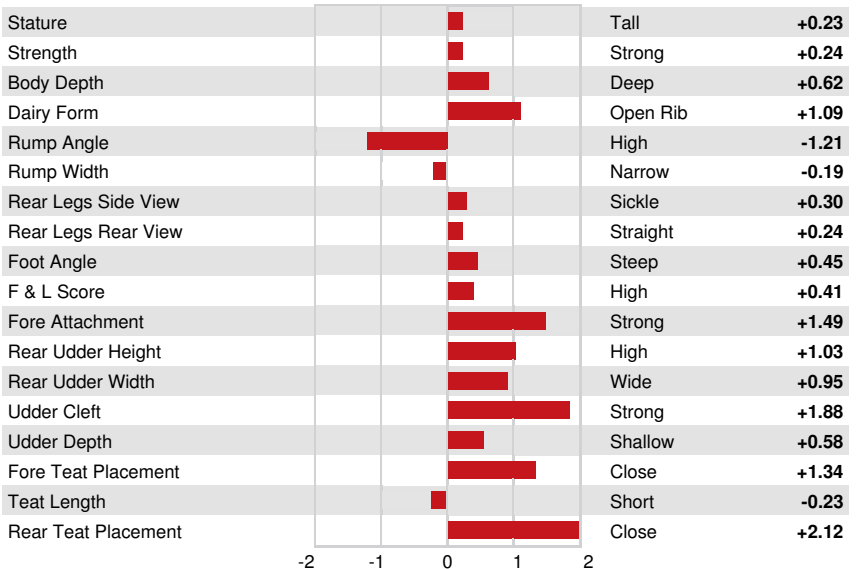
Daughter Average (ME) Milk **25,982 lbs** Fat **1,031 lbs** Protein **828 lbs**

HEALTH & REPRODUCTION Immunity **106**

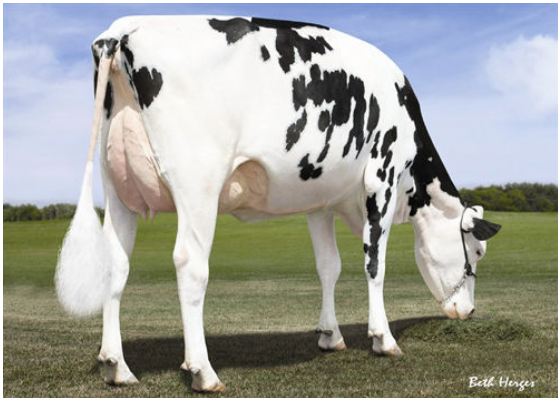
Productive Life	2.3	Calf Immunity	106
Somatic Cell Score	2.81	Cow Conception Rate	-1.0
Daughter Pregnancy Rate	-1.3	Heifer Conception Rate	-1.9
Livability	-1.7	Sire Calving Ease	1.7% 90% Rel
Heifer Livability	-0.2	Daughter Calving Ease	2.0% 81% Rel
Fertility Index	-1.2	Sire Stillbirth	6.1%
		Daughter Stillbirth	4.9%

CONFORMATION 591 Herds 1915 Dtrs 90% Rel MACE / 12-24

PTAT	1.15	Body Composite	-0.27
Udder Composite	1.11	Dairy Composite	0.40
Feet & Legs Composite	0.35		



PROGENESIS SUPERSHOT KASSIDY
DAM



MS C-HAVEN OMAN KOOL
THIRD DAM



MS C-HAVEN OMAN KOOL
THIRD DAM