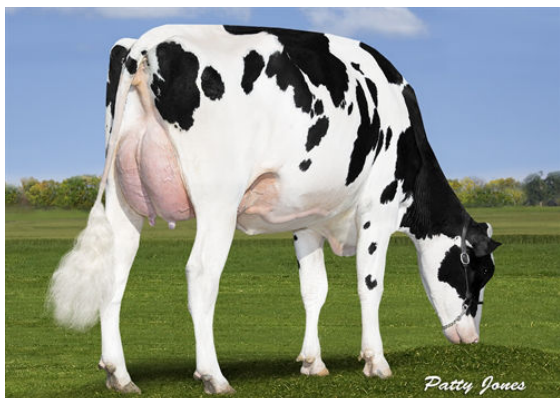




ZAHBULLS 1STCLASS  
 SNOWBIZ MCCUTCHEN LOTTIE VG-87-2YR-CAN 13\*  
 DE-SU BKM MCCUTCHEN 1174  
 FREUREHAVEN FGS LUCY VG-86-2YR-CAN 16\*  
 FLEVO GENETICS SNOWMAN  
 FREUREHAVEN SHOTTLE LAUTELLA VG-89-3YR-CAN 11\*



SNOWBIZ MCCUTCHEN LOTTIE  
DAM



SNOWBIZ MCCUTCHEN LOTTIE  
DAM

**GTPI 2287**

VG-CAN TD TR TL TY TV 99%-I HH1F HH2F HH3F HH4F HH5F HH6F HCDF HMWF

Reg. #: HOCANM12111803 aAa: 234165 DMS: 246,234  
 Born: 04/12/2015 Kappa Casein: AB Beta Casein: A2A2

PRODUCTION		2048 Herds	4586 Dtrs	98% Rel	MACE-G / 12-24	
Milk lbs	Fat lbs			Fat %	Protein lbs	Protein %
457	18			0.00	21	+0.03
NM\$ 106	CM\$ 111			FM\$ 69	GM\$ 99	DWP\$ -56
Feed Efficiency	RFI			Feed Saved	Methane Efficiency	
43	77			-196	93	

Daughter Average (ME) Milk 25,782 lbs Fat 1,010 lbs Protein 827 lbs

**HEALTH & REPRODUCTION** Immunity 99

Productive Life	-0.7	Calf Immunity	99
Somatic Cell Score	2.91	Cow Conception Rate	-1.5
Daughter Pregnancy Rate	-0.9	Heifer Conception Rate	-0.3
Livability	-2.3	Sire Calving Ease	2.1% 95% Rel
Heifer Livability	0.2	Daughter Calving Ease	2.8% 92% Rel
Fertility Index	-1.0	Sire Stillbirth	6.2%
		Daughter Stillbirth	6.6%

**CONFORMATION** 1387 Herds 2718 Dtrs 96% Rel MACE / 12-24

PTAT	2.20	Body Composite	0.79
Udder Composite	2.09	Dairy Composite	0.36
Feet & Legs Composite	0.59		

