



PROGENESIS PADAWAN  
 ALL.NURE RUBICON BALOU LOU  
 EDG RUBICON  
 GIL BALISTO LOULOU  
 DE-SU 11236 BALISTO  
 2 ND GYPSY

**GTPI 2682**

TD TR TL TY MWT TV 99%-I HH1F HH2F HH3F HH4F HH5F HH6F HCDF HMWF

Reg. #: HOITAM33990498039 aAa: 243165 DMS:  
 Born: 05/07/2018 Kappa Casein: AB Beta Casein: A2A2

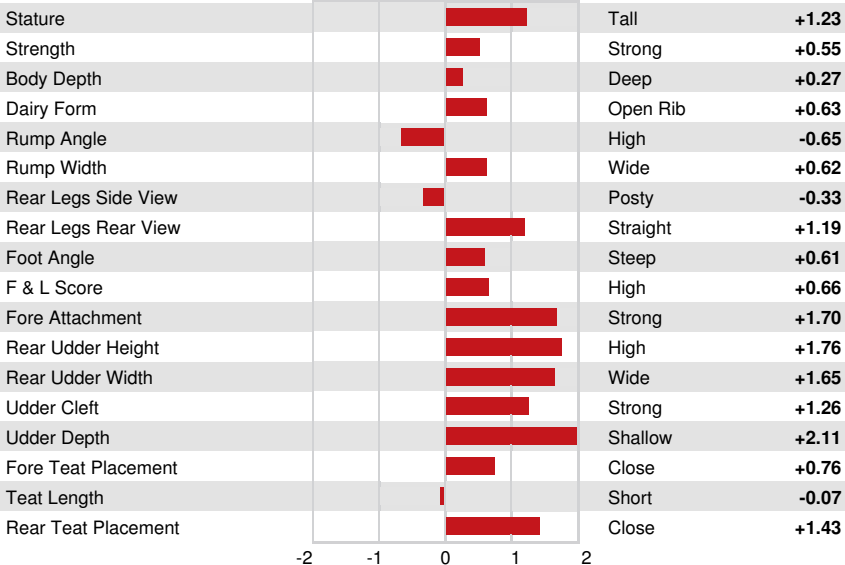
PRODUCTION		G Herds	G Dtrs	82% Rel	CDCB-G / 12-24	
Milk lbs <b>1508</b>	Fat lbs <b>32</b>			Fat % <b>-0.10</b>	Protein lbs <b>49</b>	Protein % <b>0.00</b>
NM\$ <b>576</b>	CM\$ <b>584</b>			FM\$ <b>549</b>	GM\$ <b>553</b>	DWP\$ <b>482</b>
Feed Efficiency <b>121</b>	RFI <b>55</b>			Feed Saved <b>-132</b>	Methane Efficiency <b>107</b>	

**HEALTH & REPRODUCTION** Immunity **99**

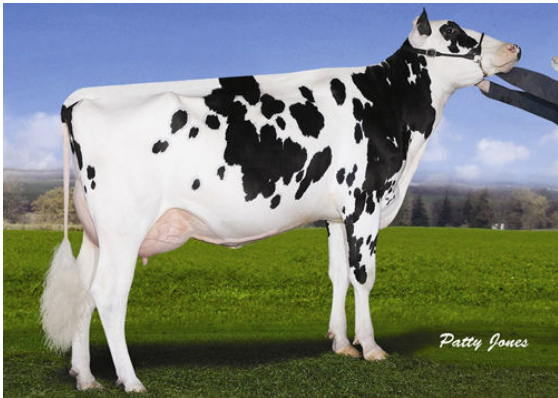
Productive Life	<b>4.2</b>	Calf Immunity	<b>100</b>
Somatic Cell Score	<b>2.70</b>	Cow Conception Rate	<b>2.5</b>
Daughter Pregnancy Rate	<b>0.8</b>	Heifer Conception Rate	<b>3.2</b>
Livability	<b>0.1</b>	Sire Calving Ease	<b>2.3%</b> 81% Rel
Heifer Livability	<b>0.1</b>	Daughter Calving Ease	<b>1.9%</b> 61% Rel
Fertility Index	<b>2.0</b>	Sire Stillbirth	<b>6.1%</b>
		Daughter Stillbirth	<b>4.8%</b>

**CONFORMATION** G Herds G Dtrs 81% Rel HAUSA-G / 12-24

PTAT	<b>1.34</b>	Body Composite	<b>0.51</b>
Udder Composite	<b>1.55</b>	Dairy Composite	<b>0.40</b>
Feet & Legs Composite	<b>0.55</b>		



GILLETTE GARRETT LOOKAS  
 FOURTH DAM



GILLETTE BOLTON 2ND LOOK  
 FIFTH DAM