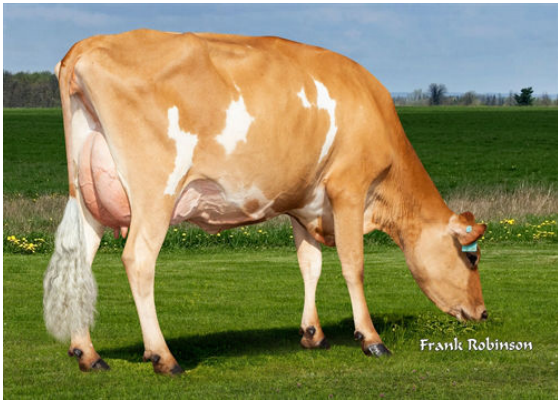




JX PROGENESIS MONARCH {5}
 JX PROGENESIS CINDERELLA {6} DES-77%-2YR-USA
 JX SUNSET CANYON GOT MAID {5}
 PROGENESIS CRAZE CORDE EX-90%-5YR-USA
 RIVER VALLEY CIRCUS CRAZE
 JX PROGENESIS GRACE TOO {6} DES-73%-2YR-USA



JX PROGENESIS CINDERELLA {6}
DAM



PROGENESIS CRAZE CORD {6}
GRANDDAM



PROGENESIS CRAZE CORD {6}
GRANDDAM

GPA LPI +2075 PRO\$ 2254 JH1F JNSF

Reg. #: JE840M3254283371 aAa: 243615 DMS:
 Born: 12/09/2022 Kappa Casein: BB Beta Casein: A2A2

PRODUCTION		G Herds	G Daughters	62% Rel	GPA 24*DEC	
Milk kg	1465			Fat %	60	Protein %
				+0.03		+0.01

HEALTH & REPRODUCTION		Immunity 104	
Herd Life	105	Calf Immunity	100
Somatic Cell Score	110	Calving Ability	102
Daughter Fertility	102	Daughter Calving Ability	102
Body Condition Score	94	Milking Speed	98
Mastitis Resistance	108	Milking Temperament	103
Lactation Persistence	99	Metabolic Disease Resistance	100

CONFORMATION		G Herds	G Daughters	51% Rel	GPA 24*DEC	
Conformation	0			Dairy Strength	0	
Mammary System	1			Rump	-3	
Feet & Legs	-1					

