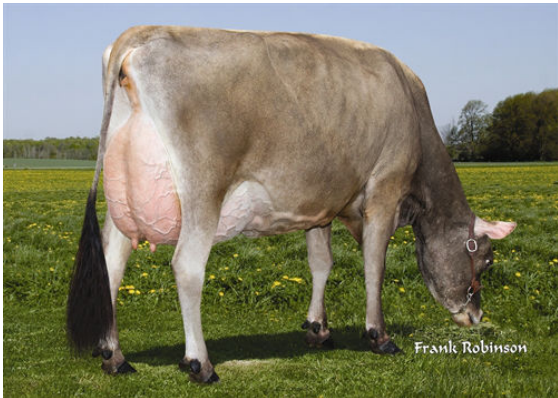




ALL LYNNS LOUIE VALENTINO
 REXLEA TIME IDOLYN EX-90-3E-CAN 5*
 LENCREST ON TIME
 REXLEA BOMBER IDEA EX-91-3E-CAN 4*
 WF BROOK BOMBER
 REXLEA PERIMITER IOLA EX-90-3E-CAN 3*



REXLEA TIME IDOLYN
 Dam

GLPI +1245 PRO\$ 64 JH1F JNSF

Reg. #: JECANM11166757 aAa: 243615 DMS: 345
 Born: 10/04/2010 Kappa Casein: BB Beta Casein: A2A2

PRODUCTION 56 Herds 73 Daughters 94% Rel GEBV 24*DEC

Milk kg	Fat kg	Fat %	Protein kg	Protein %
248	-29	-0.54	2	-0.09

Daughter Average (ME) Milk **8,177 kg** Fat **381 kg** Protein **311 kg**

HEALTH & REPRODUCTION **Immunity 102**

Herd Life	102	Calf Immunity	101
Somatic Cell Score	94	Calving Ability	95
Daughter Fertility	101	Daughter Calving Ability	104
Body Condition Score	99	Milking Speed	101
Mastitis Resistance	95	Milking Temperament	104
Lactation Persistence	104	Metabolic Disease Resistance	103

CONFORMATION 41 Herds 63 Daughters 85% Rel GEBV 24*DEC

Conformation	6	Dairy Strength	-3
Mammary System	9	Rump	1
Feet & Legs	3	GP or Better %	71

