



ABS CRIMSON
 PROGENESIS POSITIVE MARYLAND EX-90-2E-CAN
 PROGENESIS POSITIVE
 PROGENESIS JEDI MENACE EX-90-3E-CAN
 S-S-I MONTROSS JEDI
 PEAK BOMBERO MAXIMA VG-87-6YR-USA DOM

GMACE LPI +3295 PRO\$ 2204

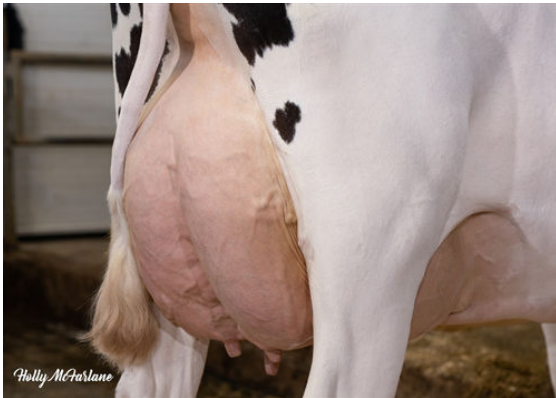
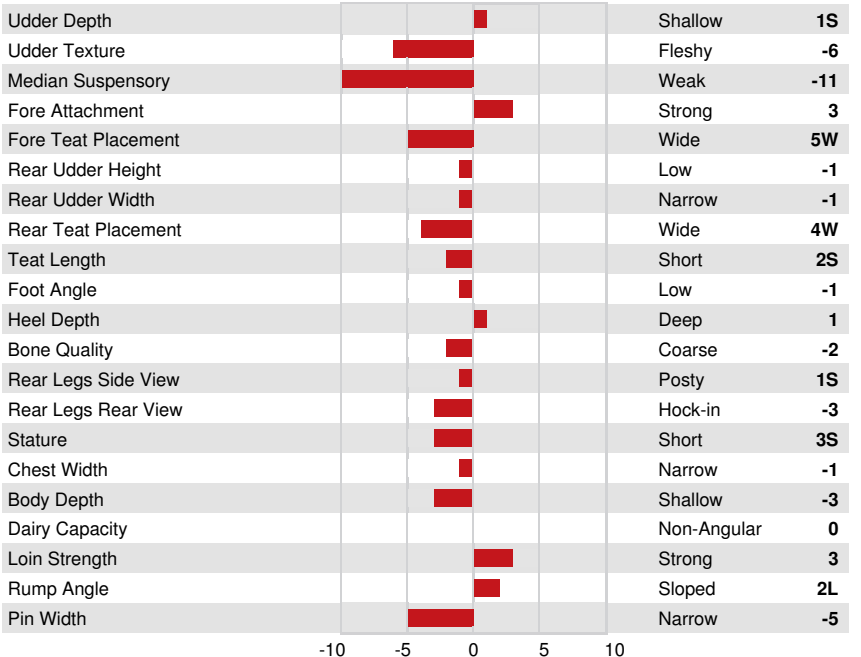
DPF RDF BLF CNF BYF MWF CVF HH1F HH2F HH3F HH4F HH5F HH6F HCDF HMWF

Reg. #: HOCANM13567734 aAa: 342561 DMS: 345,456
 Born: 12/12/2019 Kappa Casein: BB Beta Casein: A2A2

PRODUCTION			GMACE 24*DEC	
29 Herds 664 Daughters 85% Rel				
Milk kg	Fat kg	Fat %	Protein kg	Protein %
360	79	+0.57	46	+0.29
Feed Efficiency	BMR	Methane Efficiency		
97	103	104		

HEALTH & REPRODUCTION		Immunity
Herd Life	109	Calf Immunity 94
Somatic Cell Score	109	Calving Ability 105
Daughter Fertility	106	Daughter Calving Ability 108
Body Condition Score	102	Milking Speed 104
Mastitis Resistance	108	Milking Temperament 104
Lactation Persistence	103	Metabolic Disease Resistance 105

CONFORMATION		GPA 24*DEC
G Herds	G Daughters	82% Rel
Conformation	-2	Dairy Strength -2
Mammary System	-2	Rump 1
Feet & Legs	0	



PROGENESIS JEDI MENACE
 GRANDDAM



PROGENESIS JEDI MENACE
 GRANDDAM



PEAK BOMBERO MAXIMA
 THIRD DAM