



SANDY-VALLEY CHALLENGER
 SANDY-VALLEY RSLV ERYSS
 BLUMENFELD JEDI RESOLVE
 SANDY-VALLEY SLV ESSENCE EX-92-5YR-USA
 SEAGULL-BAY SILVER
 SANDY-VALLEY MORGAN ERA GP-83-2YR-USA GMD DOM

GPA LPI +3175 PRO\$ 1909

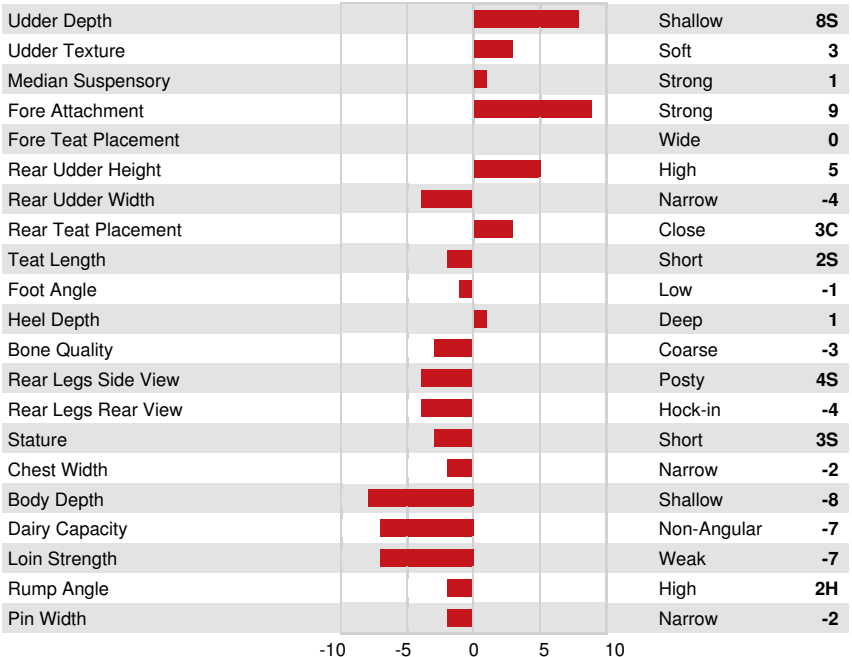
DPF RDF BLF CNF BYF MWF CVF HH1F HH2F HH3F HH4F HH5F HH6F HCDF HMWF

Reg. #: HO840M3148929462 aAa: DMS:
 Born: 07/25/2019 Kappa Casein: AB Beta Casein: A1A2

PRODUCTION			G Herds	G Daughters	85% Rel	GPA 24*DEC	
Milk kg	Fat kg	Fat %				Protein kg	Protein %
-20	51	+0.45				37	+0.32
Feed Efficiency	BMR	Methane Efficiency					
97	95	110					

HEALTH & REPRODUCTION			Immunity	111
Herd Life	109	Calf Immunity	103	
Somatic Cell Score	108	Calving Ability	102	
Daughter Fertility	103	Daughter Calving Ability	109	
Body Condition Score	106	Milking Speed	103	
Mastitis Resistance	108	Milking Temperament	98	
Lactation Persistence	103	Metabolic Disease Resistance	104	

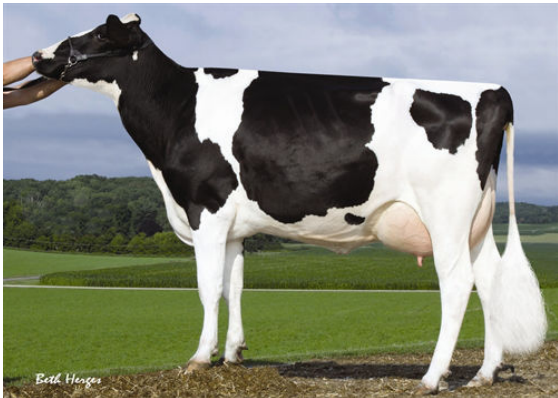
CONFORMATION			G Herds	G Daughters	82% Rel	GPA 24*DEC	
Conformation	1	Dairy Strength				-7	
Mammary System	7	Rump				-5	
Feet & Legs	-5						



SANDY-VALLEY SLV ESSENCE
GRANDDAM



SANDY-VALLEY MORGAN ERA
THIRD DAM



SANDY-VALLEY PLANE SAPPHIRE
FIFTH DAM