



BOMAZ CABOT
 FB LULU ACHV VEGAS EX-90-6YR-CAN 1*
 ABS ACHIEVER
 STUNNING-M MONTROSS LULU VG-87-2YR-USA DOM
 BACON-HILL MONTROSS
 BUTLERVIEW UNO LIVA 2074 VG-85-3YR-USA

GPA LPI +3434 PRO\$ 2259

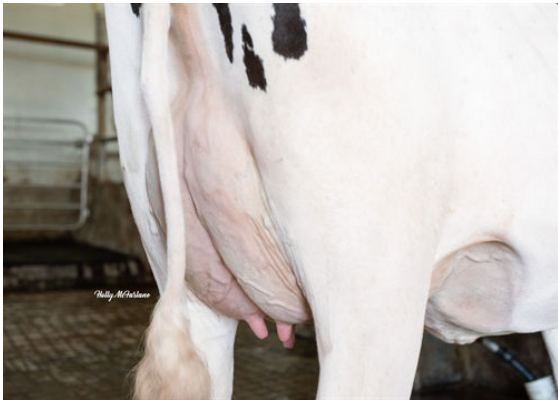
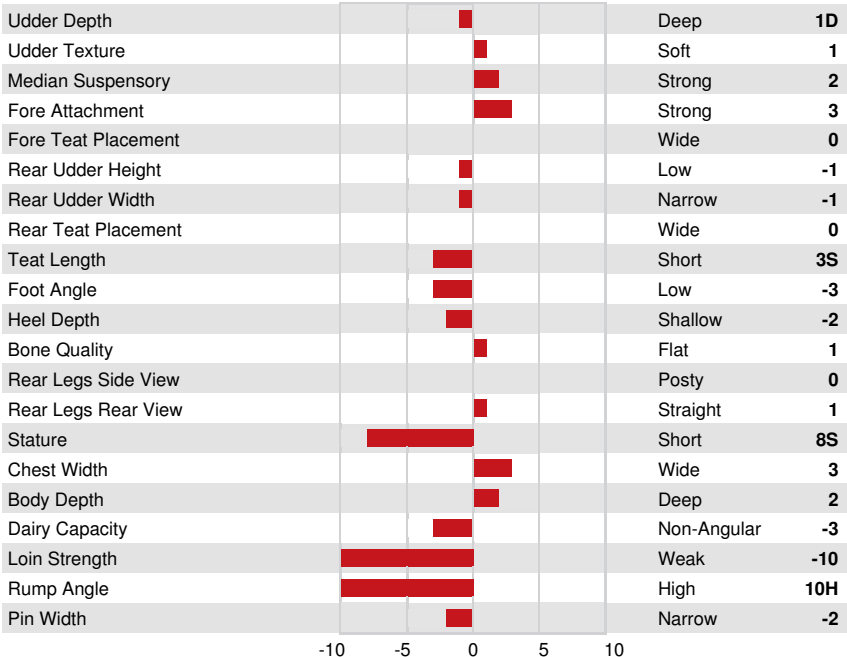
DPF RDF BLF CNF BYF CVF HH1F HH2F HH3F HH4F HH5C HH6F HCDF HMWF

Reg. #: HOCANM13353893 aAa: 351462 DMS: 456,561
 Born: 05/28/2019 Kappa Casein: BE Beta Casein: A1A2

PRODUCTION		17 Herds 399 Daughters 92% Rel			GMACE 24*DEC
Milk kg	568	Fat kg	104	Fat %	+0.71
Protein kg	46	Protein %	+0.24		
Feed Efficiency	96	BMR	102	Methane Efficiency	

HEALTH & REPRODUCTION		Immunity	114
Herd Life	105	Calf Immunity	112
Somatic Cell Score	108	Calving Ability	103
Daughter Fertility	103	Daughter Calving Ability	103
Body Condition Score	103	Milking Speed	101
Mastitis Resistance	109	Milking Temperament	103
Lactation Persistence	104	Metabolic Disease Resistance	105

CONFORMATION		G Herds	G Daughters	80% Rel	GPA 24*DEC
Conformation	0	Dairy Strength	-2		
Mammary System	3	Rump	-11		
Feet & Legs	2				



FB LULU ACHV VEGAS
DAM



FB LULU ACHV VEGAS
DAM