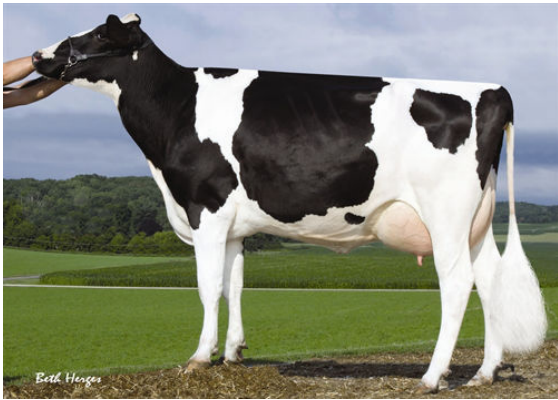




PROGENESIS FORTUNE
 SANDY-VALLEYERNITY EX-92-5YR-USA DOM
 EDG RUBICON
 SANDY-VALLEY MORGAN ERA GP-83-2YR-USA GMD DOM
 S-S-I BOOKEM MORGAN
 SANDY-VALLEY RBS EMERALD VG-88-6YR-USA GMD



SANDY-VALLEY PLANE SAPPHIRE
 FOURTH DAM

GLPI +2463 PRO\$ 715

DPF RDF BLF BYF MWF CVF HH1F HH2F HH3F HH4F HH5F HH6F HCDF HMWF

Reg. #: HO840M3140616308 aAa: 432516 DMS: 345
 Born: 05/26/2017 Kappa Casein: AA Beta Casein: A1A2

PRODUCTION 31 Herds 65 Daughters 95% Rel GEBV 24*DEC

| | | | | |
|-----------------|--------|--------------------|------------|-----------|
| Milk kg | Fat kg | Fat % | Protein kg | Protein % |
| 365 | 12 | -0.02 | 17 | +0.03 |
| Feed Efficiency | BMR | Methane Efficiency | | |
| 104 | 103 | 100 | | |

Daughter Average (ME) Milk **12,426 kg** Fat **495 kg** Protein **405 kg**

HEALTH & REPRODUCTION Immunity **98**

| | | | |
|-----------------------|-----|------------------------------|-----|
| Herd Life | 101 | Calf Immunity | 100 |
| Somatic Cell Score | 104 | Calving Ability | 98 |
| Daughter Fertility | 101 | Daughter Calving Ability | 108 |
| Body Condition Score | 100 | Milking Speed | 99 |
| Mastitis Resistance | 105 | Milking Temperament | 104 |
| Lactation Persistency | 97 | Metabolic Disease Resistance | 104 |

CONFORMATION 26 Herds 60 Daughters 91% Rel GEBV 24*DEC

| | | | |
|----------------|-----|----------------|-----|
| Conformation | -10 | Dairy Strength | -10 |
| Mammary System | -4 | Rump | -12 |
| Feet & Legs | -9 | GP or Better % | 48 |

