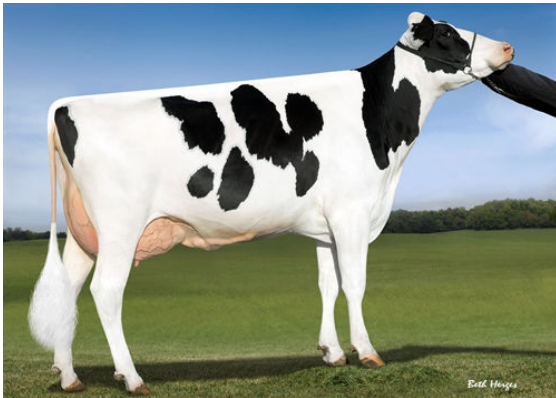




PROGENESIS GRANITE  
 PINE-TREE 9882 PROF 7019 VG-86-4YR-USA  
 S-S-I PARTYROCK PROFIT  
 OCD SUPERSIRE 9882 VG-86-2YR-USA DOM  
 SEAGULL-BAY SUPERSIRE  
 OCD ROBUST SHIMMER EX-90-2E-USA DOM



OCD SUPERSIRE 9882  
 GRANDDAM



AMMON-PEACHEY SHANA  
 FOURTH DAM



AMMON-PEACHEY SHANA  
 FOURTH DAM

<b>GPA LPI +3070 PRO\$ 1348</b>				
DPF RDF BLF CNF BYF MWC CVF	HH1F HH2F HH3F HH4F HH5F HH6F HCDF HMWC			
Reg. #: HOCANM12789812	aAa: 342516 DMS: 135,123			
Born: 06/13/2017	Kappa Casein: AE Beta Casein: A1A2			
<b>PRODUCTION</b> G Herds G Daughters 87% Rel GPA 24*DEC				
Milk kg <b>1212</b>	Fat kg <b>63</b>	Fat % <b>+0.11</b>	Protein kg <b>53</b>	Protein % <b>+0.10</b>
Feed Efficiency <b>99</b>	BMR <b>99</b>	Methane Efficiency		

<b>HEALTH &amp; REPRODUCTION</b>		<b>Immunity 86</b>
Herd Life	<b>100</b>	Calf Immunity <b>93</b>
Somatic Cell Score	<b>94</b>	Calving Ability <b>102</b>
Daughter Fertility	<b>102</b>	Daughter Calving Ability <b>104</b>
Body Condition Score	<b>94</b>	Milking Speed <b>99</b>
Mastitis Resistance	<b>92</b>	Milking Temperament <b>103</b>
Lactation Persistence	<b>94</b>	Metabolic Disease Resistance <b>99</b>

<b>CONFORMATION</b> G Herds G Daughters 84% Rel GPA 24*DEC	
Conformation	<b>2</b> Dairy Strength <b>3</b>
Mammary System	<b>-1</b> Rump <b>1</b>
Feet & Legs	<b>5</b>

