



WILLSBRO ABBOTT  
 PROGENESIS SUPERSHOT KASSIDY VG-87-2YR-USA 6\*  
 COGENT SUPERSHOT  
 LOOKOUT PESCE PONDE KREED  
 MOUNTFIELD SSI DCY MOGUL  
 MS C-HAVEN OMAN KOOL VG-88-6YR-CAN 10\*

GLPI +2987 PRO\$ 1434

VG-CAN DPF RDF BLF BYF MWF CVF HH1F HH2F HH3F HH4F HH5F HH6F HCDC HMWF

Reg. #: HOCANM12608917 aAa: 135264 DMS: 126  
 Born: 07/25/2016 Kappa Casein: BB Beta Casein: A2A2

**PRODUCTION** 65 Herds 75 Daughters 95% Rel GEBV 24\*DEC

Milk kg	Fat kg	Fat %	Protein kg	Protein %
1344	75	+0.19	64	+0.14
Feed Efficiency	BMR	Methane Efficiency		
95	97	100		

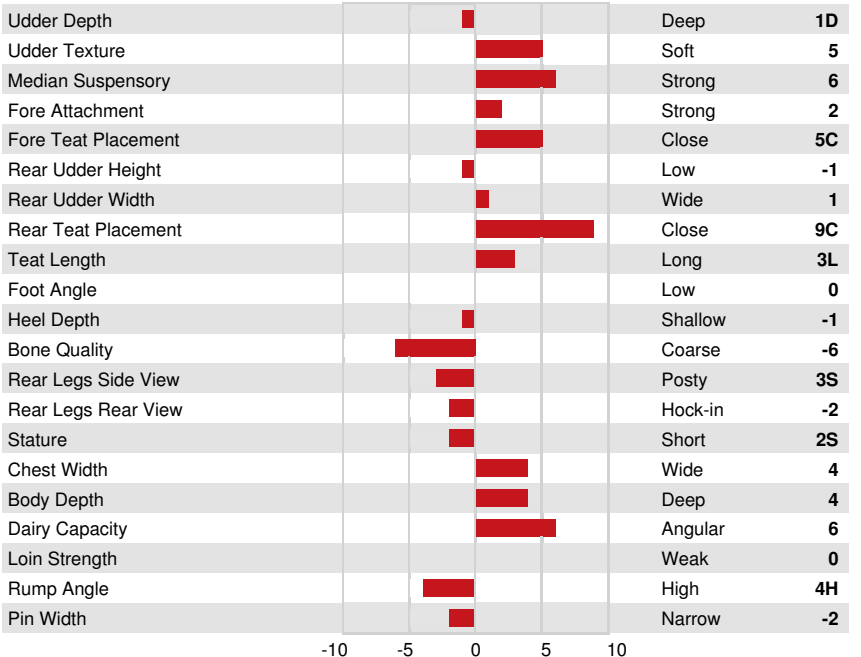
Daughter Average (ME) Milk 12,938 kg Fat 525 kg Protein 429 kg

**HEALTH & REPRODUCTION** Immunity 106

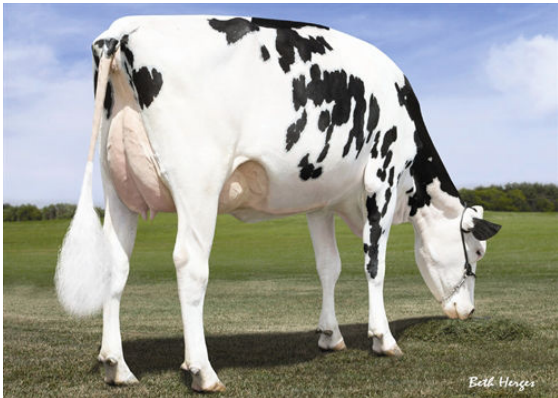
Herd Life	103	Calf Immunity	106
Somatic Cell Score	104	Calving Ability	106
Daughter Fertility	88	Daughter Calving Ability	105
Body Condition Score	101	Milking Speed	95
Mastitis Resistance	104	Milking Temperament	104
Lactation Persistency	101	Metabolic Disease Resistance	99

**CONFORMATION** 54 Herds 76 Daughters 92% Rel GEBV 24\*DEC

Conformation	2	Dairy Strength	7
Mammary System	3	Rump	-4
Feet & Legs	-6	GP or Better %	64



PROGENESIS SUPERSHOT KASSIDY  
DAM



MS C-HAVEN OMAN KOOL  
THIRD DAM



MS C-HAVEN OMAN KOOL  
THIRD DAM