



POLLED

**BOMAZ HOLOGRAM-P**

COL CANDYGOLD VG-86-4YR-DEU

VIEW-HOME POWERBALL-P

COL CARMEN 730 VG-86-DEU

SEAGULL-BAY HEADLINER

DROUNER AJDH COSMO VG-87-DEU

**GMACE LPI +2964 PRO\$ 1239**

DPF RDF BLF CNF BYF MWC CVF HH1F HH2F HH3F HH4F HH5F HH6F HCDF HMWC

Reg. #: HODEUM539782047

aAa: 432516

DMS:

Born: 02/03/2017

Kappa Casein: AE

Beta Casein: A1A2

**PRODUCTION** 61 Herds 214 Daughters 92% Rel GMACE 24\*DEC

Milk kg	Fat kg	Fat %	Protein kg	Protein %
-262	37	+0.43	23	+0.27
Feed Efficiency	BMR	Methane Efficiency		
95	98			

**HEALTH & REPRODUCTION**

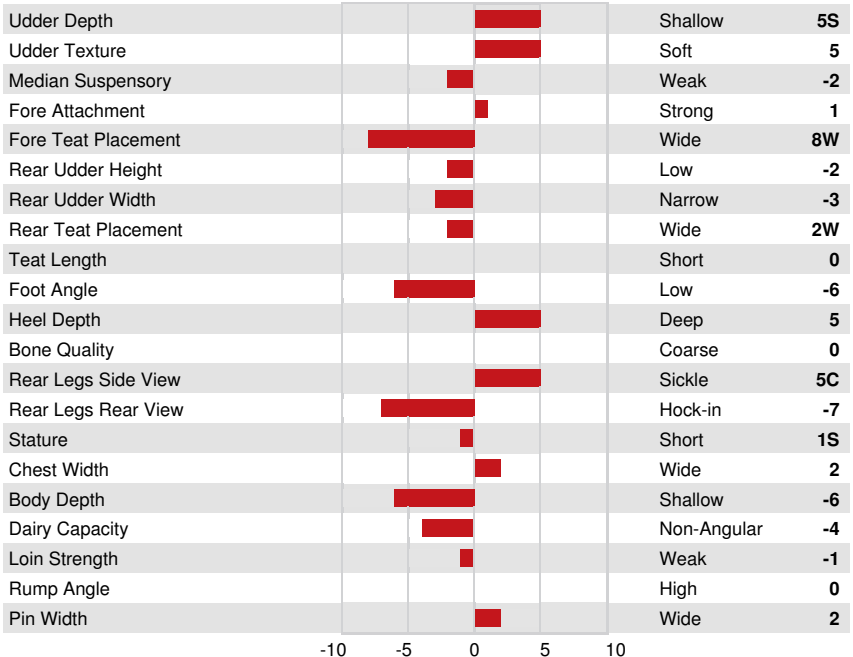
**Immunity 95**

Herd Life	103	Calf Immunity	98
Somatic Cell Score	106	Calving Ability	95
Daughter Fertility	108	Daughter Calving Ability	105
Body Condition Score	104	Milking Speed	103
Mastitis Resistance	102	Milking Temperament	97
Lactation Persistence	105	Metabolic Disease Resistance	101

**CONFORMATION** 21 Herds 78 Daughters 85% Rel

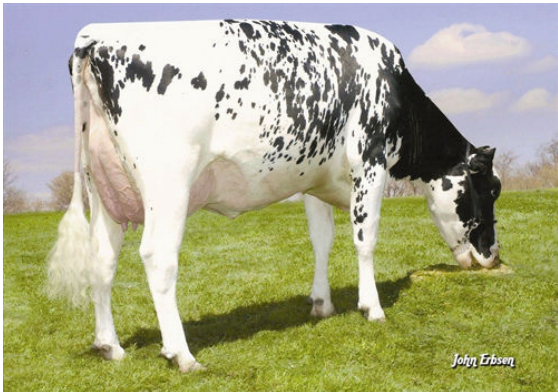
GMACE 24\*DEC

Conformation	-1	Dairy Strength	-2
Mammary System	2	Rump	-1
Feet & Legs	-3		



LARCREST OSIDE CHAMPAGNE-TW

FIFTH DAM



LARCREST COSMOPOLITAN

FOURTH DAM