



DES COTEAUX RUBYWAY
 MARBRAE ARBITER'S CATALINA EX-90-2E-CAN 1*
 RUISSEAU CLAIR ARBITER
 MARBRAE OBLIQUE'S CAMBRIDGE EX-92-6E-CAN 2*
 JELYCA OBLIQUE
 MARBRAE KINDLE'S CAMBER GP-82-2YR-CAN

GPTI 559

TF AMF AH1F AH2F AHCF

Reg. #: AYCANN120893455 aAa: 342516 DMS:
 Født: 10/04/2021 Kappa Casein: AA Beta Casein: A1A2

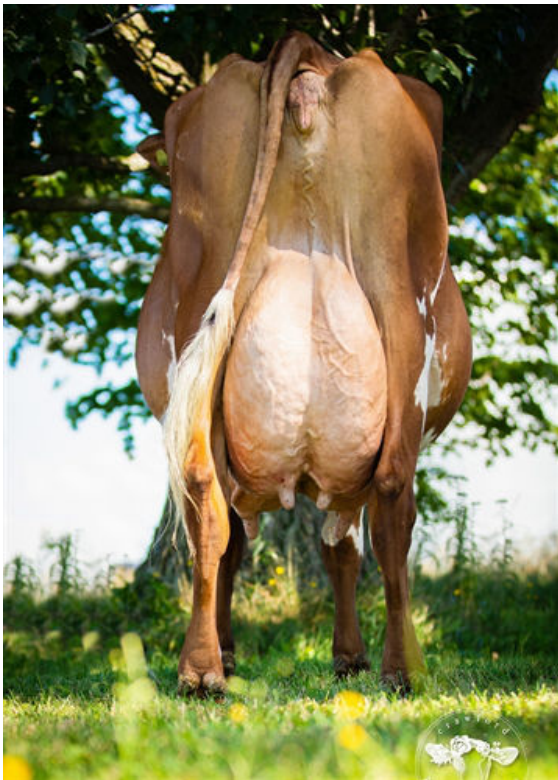
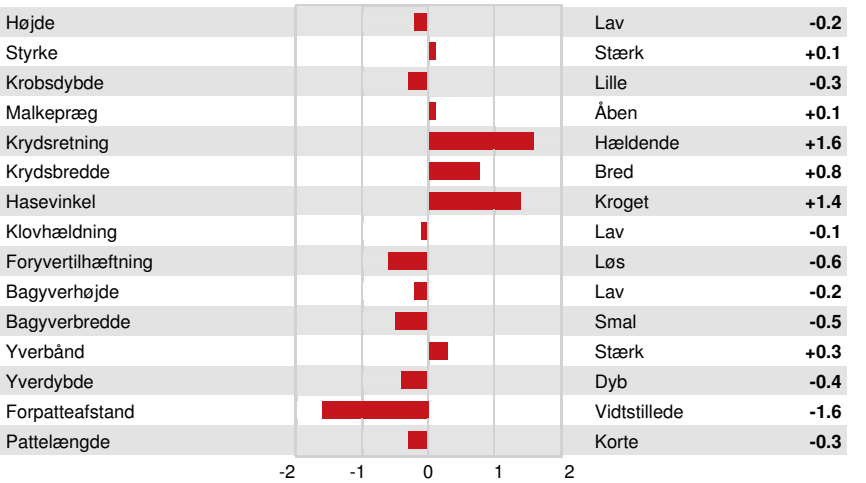
PRODUKTION		G Besætninger	G Døtre	46% skh.	CDCB-G / 12-24
Mælk lbs	Fedt lbs			Fedt %	Protein lbs
1717	75			+0.03	54
NM\$ 598	CM\$ 597			FM\$ 589	GM\$ 592
					Protein %
					-0.01

SUNDHED I ØVRIGT Immunitet 102

Holdbarhed	1.1	Kalve immunitet	102
Celletal	3.09	Koens reproeffektivitet	-0.1
Hunlig Frugtbarhed	-0.5	Kviens reproeffektivitet	1.5
Ungdyr overlevelse	-0.1		

EKSTERIØR G Besætninger G Døtre 33% skh. ABA-G

PTAT -0.1



MARBRAE OBLIQUE'S CAMBRIDGE
 GRANDDAM



MARBRAE ARBITER'S CATALINA

DAM