



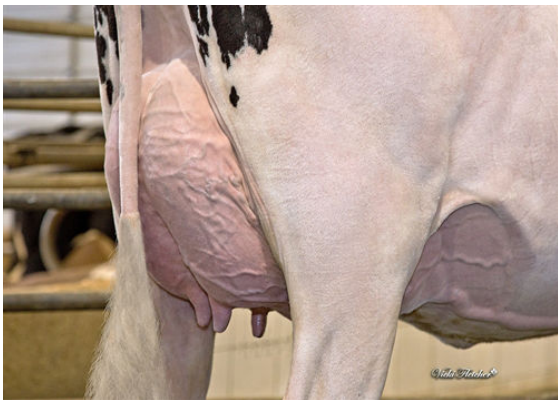
CLAYNOOK BAROLO SG
 DICKLANDS KING DOC 3503 VG-87-4YR-CAN
 WOODCREST KING DOC
 DICKLANDS CHIEF 2630 3041 VG-85-3YR-CAN
 STANTONS CHIEF
 DICKLANDS JEDI 2630 GP-81-2YR-CAN 1*

GPA LPI +3342 PRO\$ 1487

DPF RDF BLF CNF BYF MWF CVF HH1F HH2F HH3F HH4F HH5F HH6F HCDF HMWF

Reg. #: HOCANM14128958 aAa: 243516 DMS: 126,246
 Født: 08/15/2021 Kappa Casein: BB Beta Casein: A2A2

| PRODUKTION | | | GPA 24*DEC | |
|--------------------|---------|--------------------|------------|-----------|
| Mælk kg | Fedt kg | Fedt % | Protein kg | Protein % |
| 983 | 76 | +0.31 | 55 | +0.18 |
| Foder Effektivitet | BMR | Metan effektivitet | | |
| 102 | 91 | 103 | | |



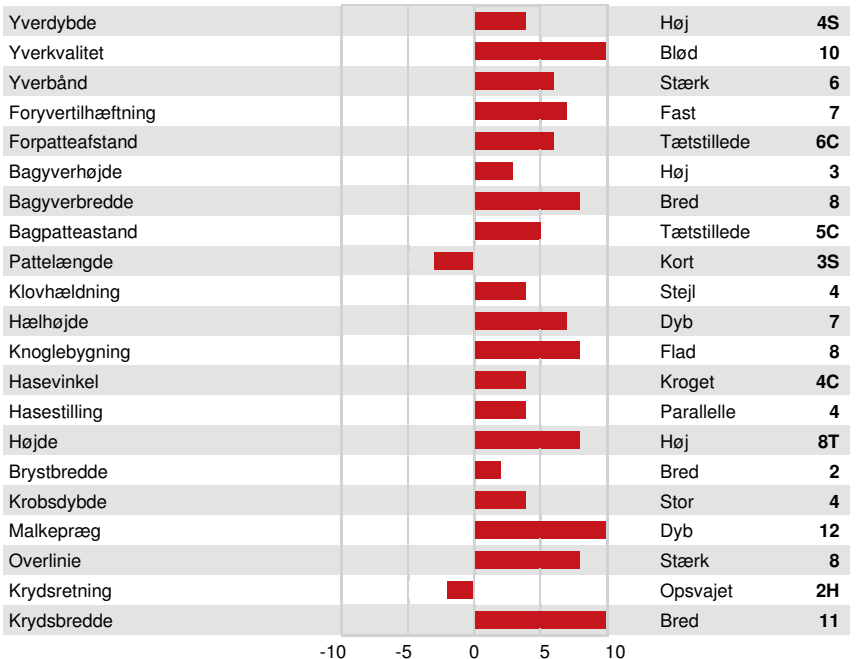
DICKLANDS KING DOC 3503
DAM

| SUNDHED I ØVRIGT | | Immunitet | 94 |
|----------------------|-----|-----------------------------|-----|
| Holdbarhed | 99 | Kalve immunitet | 98 |
| Celletal | 99 | Fødselsindex | 94 |
| Hunlig Frugtbarhed | 93 | Kælvningsevne | 96 |
| Huldværdi | 94 | Malketid | 99 |
| Mastitis Modstand | 100 | Temperament | 103 |
| Laktation persistens | 106 | Metabolisk Sygdomsresistens | 101 |



DICKLANDS KING DOC 3503
DAM

| EKSTERIØR | | GPA 24*DEC | |
|-----------------|----------|-------------|----|
| Eksteriør | 82% skh. | Kropsstyrke | 10 |
| Malkeorganer | 8 | Kryds | 7 |
| Lemmer og Klove | 6 | | |



DICKLANDS KING DOC 3503
DAM