



ABS CRIMSON
 PROGENESIS POSITIVE MARYLAND EX-90-2E-CAN
 PROGENESIS POSITIVE
 PROGENESIS JEDI MENACE EX-90-3E-CAN
 S-S-I MONTROSS JEDI
 PEAK BOMBERO MAXIMA VG-87-6YR-USA DOM

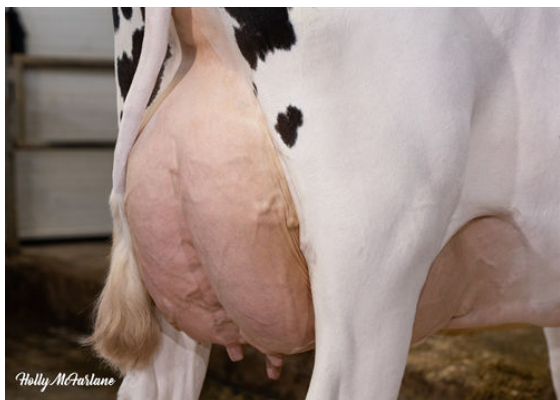
GMACE LPI +3295 PRO\$ 2204

DPF RDF BLF CNF BYF MWF CVF HH1F HH2F HH3F HH4F HH5F HH6F HCDF HMWF

Reg. #: HOCANM13567734 aAa: 342561 DMS: 345,456
 Født: 12/12/2019 Kappa Casein: BB Beta Casein: A2A2

PRODUKTION 29 Besætninger 664 Døtre 85% skh. GMACE 24*DEC

| Mælk kg | Fedt kg | Fedt % | Protein kg | Protein % |
|--------------------|---------|--------------------|------------|-----------|
| 360 | 79 | +0.57 | 46 | +0.29 |
| Foder Effektivitet | BMR | Metan effektivitet | | |
| 97 | 103 | 104 | | |



PROGENESIS JEDI MENACE
 GRANDDAM

SUNDHED I ØVRIGT Immunitet 106

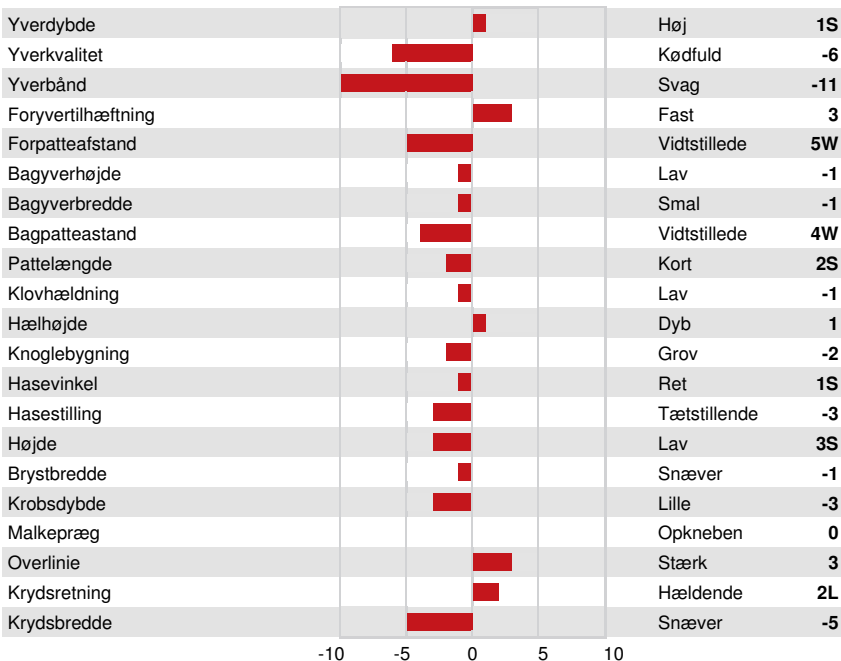
| | | | |
|----------------------|-----|-----------------------------|-----|
| Holdbarhed | 109 | Kalve immunitet | 94 |
| Celletal | 109 | Fødselsindex | 105 |
| Hunlig Frugtbarhed | 106 | Kælvningsevne | 108 |
| Huldværdi | 102 | Malketid | 104 |
| Mastitis Modstand | 108 | Temperament | 104 |
| Laktation persistens | 103 | Metabolisk Sygdomsresistens | 105 |



PROGENESIS JEDI MENACE
 GRANDDAM

EKSTERIØR G Besætninger G Døtre 82% skh. GPA 24*DEC

| | | | |
|-----------------|----|-------------|----|
| Eksteriør | -2 | Kropsstyrke | -2 |
| Malkeorganer | -2 | Kryds | 1 |
| Lemmer og Klove | 0 | | |



PEAK BOMBERO MAXIMA
 THIRD DAM