



SANDY-VALLEY CHALLENGER  
 PROGENESIS FORTUNE PALAU VG-87-3YR-CAN 4\*  
 PROGENESIS FORTUNE  
 PROGENESIS SUPERSHOT PASSION 8\*  
 COGENT SUPERSHOT  
 PROGENESIS ENFORCER PAT GP-82-3YR-CAN 3\*

**GPA LPI +3204 PRO\$ 1914**

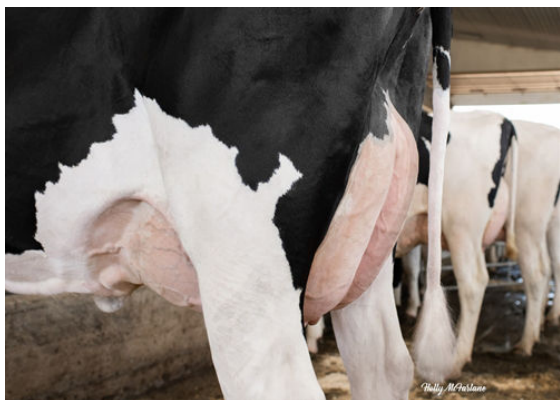
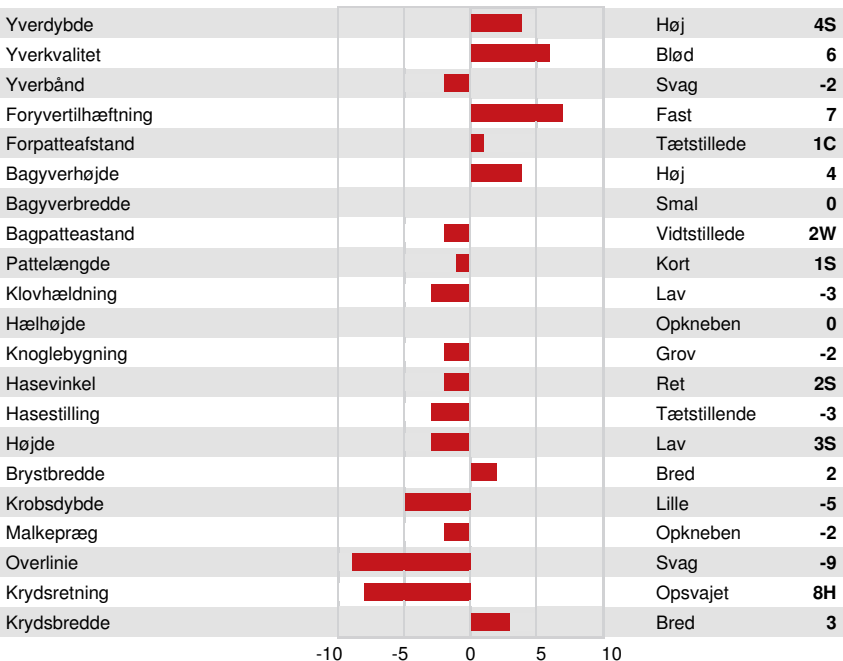
DPF RDF BLF CNF BYF MWF CVF HH1F HH2F HH3F HH4F HH5F HH6F HCDF HMWF

Reg. #: HOCANM13483251 aAa: 315246 DMS:  
 Født: 07/10/2019 Kappa Casein: BB Beta Casein: A2A2

| PRODUKTION         |     | G Besætninger | G Døtre | 85% skh.           | GPA 24*DEC |            |    |           |       |
|--------------------|-----|---------------|---------|--------------------|------------|------------|----|-----------|-------|
| Mælk kg            | 676 | Fedt kg       | 65      | Fedt %             | +0.35      | Protein kg | 51 | Protein % | +0.23 |
| Foder Effektivitet | 96  | BMR           | 96      | Metan effektivitet | 110        |            |    |           |       |

| SUNDHED I ØVRIGT     |     | Immunitet 100               |     |
|----------------------|-----|-----------------------------|-----|
| Holdbarhed           | 105 | Kalve immunitet             | 91  |
| Celletal             | 111 | Fødselsindex                | 102 |
| Hunlig Frugtbarhed   | 100 | Kælvningsevne               | 104 |
| Huldværdi            | 105 | Malketid                    | 96  |
| Mastitis Modstand    | 107 | Temperament                 | 101 |
| Laktation persistens | 97  | Metabolisk Sygdomsresistens | 105 |

| EKSTERIØR       |    | G Besætninger | G Døtre | 82% skh. | GPA 24*DEC |  |
|-----------------|----|---------------|---------|----------|------------|--|
| Eksteriør       | 1  | Kropsstyrke   | -2      |          |            |  |
| Malkeorganer    | 7  | Kryds         | -9      |          |            |  |
| Lemmer og Klove | -6 |               |         |          |            |  |



PROGENESIS FORTUNE PALAU  
DAM



PROGENESIS ENFORCER PAT  
THIRD DAM



RUSSELLWAY CAMERON PINKY  
FOURTH DAM