

2025

Beef

MANAGEMENT
HANDBOOK



SEMEX GLOBAL HEADQUARTERS

5653 Highway 6 North, Guelph, ON N1H 6J2

t: (519) 821-5060 | f: (519) 821-7225 | beef@semex.com | www.semex.com



Dennis Serhienko
Beef Sire Acquisition
& Product Support
t: (306) 389-7770
dserhienko@semex.com



Brad Gilchrist
Global Beef Supply Chain
Manager
t: (519) 440-6720
bgilchrist@semex.com



Kayla Walker
Beef Specialist
t: (519) 821-5060 ext. 1706
kwalker@semex.com



SEMEX INTERNATIONAL SUBSIDIARIES

ARGENTINA

t: 54-11-4-305-0101
inseminacion@semex.com.ar
Augusto Jordan
augustoj@semex.com.ar

AUSTRALIA

t: 03 4367 7841
Tyson Shea
tysonshea@semex.com.au
Maria Dickson
mdickson@semex.com.au

BRAZIL

t: 55-47-3231-0400
Nelson Eduardo Ziehlsdorff
nelson@semex.com.br
Antonio Carlos Sciamarelli Jr.
antonio.carlos@semex.com.br

CHINA

t: 86-21-60719585
Xiaoliang Tang
xtang@semex.com

GERMANY

t: 49-4231-95330
Martin Buschsieweke
m.buschsieweke@se-
mex-deutschland.de

HUNGARY

t: 36-68-566-200
Zoltán Veres
zveres@semex.hu

MEXICO

t: 4741166186 / 4741166188
Ernesto Padilla De Anda
eanda@semex.com

NEW ZEALAND

t: 07 899 1572
David Mayo
davidmayo@semex.com.au

UNITED KINGDOM

t: 44 (1292) 671-525
Michael Dennison
michael@semex.co.uk

USA

PO Box 8280, Madison,
Wisconsin 53708
t: (800) 303-BULL (2855)
f: (608) 838-3667
e: info@semexusa.com





3450 Rue Sicotte, Saint-Hyacinthe, QC J2S 2M2
t : 1-866-737-2427 www.ciaaq.com



Guillaume Gervais
Montérégie / provincial
t : 450-230-4650
gervaisg@ciaaq.com



Kelly De Serre
Centre-du-Québec
t : 819-806-8119
deserrek@ciaaq.com



Laurie Boilard
Lac-St-Jean
t : 418-637-9184
boilardl@ciaaq.com



Francis Levesque
Bas St-Laurent
t : 581-624-7246
levesquef@ciaaq.com



Cassandra Masson
Estrie
t : 819-571-4227
massonc@ciaaq.com



Mathieu Palerme
Outaouais Laurentides
Lanaudière
t : 819-213-3143
palermem@ciaaq.com



Patrick Jalbert
Abitibi-Témiscamingue
t : 819-520-0253
jalbertp@ciaaq.com



Steve Veilleux
Chaudière Appalaches
t : 418-209-7210
veilleuxs@ciaaq.com



Pascal Bourgault
Bas St-Laurent
t : 418-860-1765
bourgaultp@ciaaq.com

EastGen

7660 Mill Road, Guelph, ON N1H 6J1
t: 1-888-821-2150 e: info@eastgen.ca www.eastgen.ca

**EastGen is the exclusive distributor of Semex Beef in Ontario,
New Brunswick, Prince Edward Island and Newfoundland**

BREED LEADING GENETICS AT YOUR FINGERTIPS

Regional Coordinators

Ontario:



Scott Cornish

t: 705-878-3248
scott.cornish@eastgen.ca

Atlantic Canada:



Dale MacPhee

t: 506-875-1573
dale.macphee@eastgen.ca

Semen Orders:



Lori Brunskill

t: 1-888-821-2150 (Ext. 253)
lori.brunskill@eastgen.ca

**Stay up to date with new sire releases
Visit <http://www.semex.com/beef>**

**Genomic Data • Bull Videos & Photos • Breeder Testimonials
Progeny Photos • Progeny Videos**

To ensure timely delivery, please order semen well in advance.

WestGen™

80 YEARS OF EXCELLENCE



PAUL MEYER
Beef Program Manager
t: (778) 227.0360
pmeyer@westgen.com



KRISTA CHRISTIUK
WestGen Marketing Manager
t: (778) 345.5411
kchristiuk@westgen.com

SEMEN ORDERS & DISTRIBUTION

Western Canada (800) 563.5603

BRITISH COLUMBIA

Greg Hessels	West Fraser Valley/Island	(604) 626.8748
Amanda Bega	East Fraser Valley	(604) 626.7396
Matt Brandsma	BC Interior	(250) 463.2052
Phil Hemphill	Lower Mainland	(604) 302.2063

ALBERTA

Dan Dolinski, Wildrose Reproductive	Alberta & Northern BC	(403) 559.9453
Neil Hazel, Wildrose Reproductive	Alberta & Northern BC	(403) 586.5570
John Head, Camrose Breeders Service	Camrose	(780) 672.3538
Stan Swedowicz, Millenium Genetics	Lethbridge	(403) 330.9626
Erin Rey	Central Alberta	(403) 704.0243
Carson Klugkist	North Alberta	(403) 597.1148
John Muller	South Alberta	(403) 394.8530
Reed Rigney	Westlock, Alberta	(780) 348.5308

SASKATCHEWAN

Ian Hodges	Saskatchewan	(306) 260.0330
Rob McNabb	Glenbush	(306) 883.7995
Grant Scheirlinck, Southwest Genetics	Blumenhof	(306) 741.8398
Leroy Steinhubl	Balgonie/Kronau	(306) 536.1784
Mike Franc, Alliance Genetics	Prince Albert	(306) 930.8684
Ashley Kattler	Indian Head	(306) 695.7340

MANITOBA

Darrel Barkman	South/East Manitoba	(204) 346.2719
Stephane Robidoux	West Manitoba	(204) 770.6639
Ben Loeppky	South/Central Manitoba	(204) 750.1498
Blair & Lois McRae		(204) 728.3058

TABLE OF CONTENTS

8	Semex Beef Solutions
9	Angus
34	Red Angus
41	Simmental
50	Fleckvieh
56	Charolais
64	Hereford
67	Other Breeds
75	Understanding Coat Colour
76	Beef Synch Protocols
79	Terms and Definitions
82	Index



SEMEX BEEF SOLUTIONS

Each bull in the Semex Beef lineup has been carefully chosen with one goal in mind: to help you build a more profitable herd! Below is an overview of the Semex Beef Solutions which showcase the genetic strengths of the bulls we have to offer. Use these icons to easily identify and select the sires that align with your needs and goals!



CALVING EASE

For fewer difficult calvings, select Calving Ease sires.

These sires rank in the top 30% of their respective breed for the Calving Ease Direct EPD and can be used on first calf heifers.



PERFORMANCE

Performance sires will deliver progeny with added growth to increase your profitability. To earn this designation, sires must be high ranking in their respective breed for weaning weight and yearling weight EPDs.



MATERNAL

The Maternal solution icon is assigned to sires who excel in a range of maternal traits. Based on EPDs such as TM, MILK and MWWT, it is predicted that their progeny will demonstrate enhanced qualities like higher milk production and improved longevity.



CARCASS WEIGHT

Expect these sires to increase the carcass weight of their progeny as they rank in the top 30% of their respective breed for the Carcass Weight EPD. Increase your profits with an increase in volume of product produced per animal by using these Semex Beef sires!



MARBLING

Focusing on meat quality? Semex Beef Sires with the Marbling designation will increase marbling in their progeny which in result increases the overall quality of meat produced.



RIBEYE AREA

Sires with the Ribeye Area designation rank in the top 30% of their respective breed for the Ribeye Area EPD. These sires are expected to produce progeny with a larger ribeye area and higher percentage yielding progeny, allowing producers to be more profitable.

SHAW

Caldwell

11432

SITZ STELLAR 726D
SITZ RESILIENT 10208
 SITZ MISS BURGESS 1856

TEHAMA UPWARD Y238
TEHAMA MARY BLACKBIRD D094
 TEHAMA MARY BLACKBIRD Y684



OWNED WITH BELVIN ANGUS



0200AN10848 | Reg # 2307226 | BD: Aug 22, 2021 | Frame: - | BW: 79 lbs | WW: 665 lbs | YW: 1510 lbs | Scrotal: 41.8 cm

AAA-F24	CED	BW	WW	YW	RADG	DMI	YH	SC	DOC	CLAW	ANGLE	PAP	HP	CEM	MILK	MKH	MW	MH	SEN
EPD	12	-2.2	76	132	0.24	1.58	0.4	2.31	20	0.33	0.37	-0.85	18.2	8	41		38	-0.2	-13
ACC	0.51	0.77	0.49	0.44	0.35	0.35	0.48	0.49	0.37	0.31	0.31	0.32	0.29	0.34	0.36		0.41	0.44	
RANK %	15	3	20	25	60	85	65	1	45	4	5	10	4	55	1		80	90	45

AAA-F24	CW	MARB	RE	FAT	\$M	\$F	\$G	\$B	\$C
EPD	42	0.74	0.67	0.032	108	68	56	124	269
ACC	0.41	0.39	0.38	0.36					
RANK %	65	35	45	70	1	90	35	75	35

Selected by Belvin Angus as the \$59,000 high Seller from the 2023 Shaw Cattle Co Sale in Idaho

Caldwell is a phenotypic knockout, with impressive length and rib shape, large scrotal, great feet and an athletic presence to him

Proven pedigree as he is sired by the extremely popular Sitz Resilient 10208 and backed by a phenomenal dam who is a full sibling to Tehama Tahoe B767

Caldwell is a Calving Ease sire who offers an awesome birth to weaning spread and has an EPD profile that covers all the bases

Truly a unique breeding piece that will produce progeny that tip the scales and top future sales for breeders everywhere

MUSGRAVE 316

Colossal

137

CONNELLY CAPITALIST 028
LD CAPITALIST 316
 LD DIXIE ERICA 2053

MUSGRAVE BIG SKY
MUSGRAVE LADY BARBARA 545
 MUSGRAVE LADY BARBARA 272



OWNED WITH PEAK DOT RANCH & SCHAFFS ANGUS VALLEY



0200ANI0737 | Reg # 201884 | BD: Jan 4, 2017 | **Frame: 5.6** | **BW: 78 lbs** | **WW: 878 lbs** | **YW: 1376 lbs** | **Scrotal: 40.0 cm**

AAA-F24	CED	BW	WW	YW	RADG	DMI	YH	SC	DOC	CLAW	ANGLE	PAP	HP	CEM	MILK	MKH	MW	MH	SEN
EPD	11	-1.5	62	104	0.24	0.55	-0.3	0.18	21	0.35	0.38	0.07	9.1	12	21		33	-0.2	1
ACC	0.84	0.93	0.91	0.85	0.43	0.43	0.70	0.73	0.59	0.49	0.51	0.32	0.36	0.76	0.73		0.55	0.52	
RANK %	15	10	60	70	60	20	95	90	40	10	10	25	80	20	80		80	90	20

AAA-F24	CW	MARB	RE	FAT	SM	SF	SG	SB	SC
EPD	42	0.9	0.67	0.017	78	97	65	162	288
ACC	0.52	0.47	0.48	0.43					
RANK %	65	20	45	50	15	45	20	30	20

Unmatched body mass and rib shape rarely seen in a top ranking proven Calving Ease sire and progeny data is reinforcing his strong CE numbers

Maternal lineage has many generations of high fertility, strong footed and great uddered females. His first daughters in production are outstanding!

Backed by one of the very top cows in the Angus breed



Dam - MUSGRAVE LADY BARBARA 545



Progeny at Peak Dot Ranch - PDAR 2087K



Progeny - SAV COURAGE 3003

QUAKER HILL

High Cotton 9U17

K C F BENNETT CONSENT Y75
K C F BENNETT SUMMATION
 THOMAS PATRICIA 9705

R B TOUR OF DUTY 177
QUAKER HILL ERICA ELBA 5Y01
 QUAKER HILL ERICA ELBA 5J11



0200ANI0384 | Reg # 2194830 | BD: Sept 16, 2019 | **Frame:** - | **BW:** 71 lbs | **WW:** - | **YW:** - | **Scrotal:** 39.5 cm

AAA-F24	CED	BW	WW	YW	RADG	DMI	YH	SC	DOC	CLAW	ANGLE	PAP	HP	CEM	MILK	MKH	MW	MH	SEN
EPD	16	-0.3	84	153	0.3	2.04	0.5	0.52	17	0.35	0.39	3.21	12.3	12	32		102	0.4	-40
ACC	0.40	0.61	0.43	0.38	0.31	0.31	0.44	0.39	0.35	0.29	0.29	0.25	0.25	0.31	0.33		0.39	0.42	
RANK %	2	20	10	5	20	95	60	75	65	10	15	90	50	15	15		15	55	95

AAA-F24	CW	MARB	RE	FAT	SM	SF	SG	SB	SC
EPD	83	0.27	1.08	0.008	67	135	40	175	294
ACC	0.37	0.36	0.34	0.32					
RANK %	3	90	10	40	45	2	80	20	20



Sire - K C F BENNETT SUMMATION



MGS - R B TOUR OF DUTY 177

High Cotton is a true heifer-safe Calving Ease option that brings top 2% calving ease with an actual BW of 71 lbs

Calves will take off and grow as High Cotton boasts WW and YW in the top 10% or better for the Angus breed

AVAILABLE FEMALE & MALE SORTED



ANGUS | 11

GVC

Stock Fund

038H

BASIN PAYWEIGHT 1682
DEER VALLEY GROWTH FUND
 DEER VALLEY RITA 36113

V A R LEGEND 5019
GVC DESIREE F024
 G A R DAYBREAK 1402



OWNED WITH GREEN VALLEY CATTLE



0200ANI0783 | Reg # 2199000 | BD: Feb 14, 2020 | Frame: - | BW: 74 lbs | WW: 840 lbs | YW: 1403 lbs | Scrotal: 37.5 cm

AAA-F24	CED	BW	WW	YW	RADG	DMI	YH	SC	DOC	CLAW	ANGLE	PAP	HP	CEM	MILK	MKH	MW	MH	SEN
EPD	16	-2.3	83	150	0.33	1.68	0.9	0.7	24	0.46	0.48	4.24	14.8	16	32		114	0.9	-46
ACC	0.49	0.69	0.53	0.39	0.35	0.35	0.47	0.40	0.37	0.30	0.30	0.29	0.27	0.33	0.34		0.39	0.42	
RANK %	2	3	10	10	5	90	15	60	25	35	50	95	20	2	20		10	10	95

AAA-F24	CW	MARB	RE	FAT	SM	SF	SG	SB	SC
EPD	64	1.34	0.64	0.053	64	104	83	187	307
ACC	0.41	0.38	0.37	0.35					
RANK %	20	4	50	90	40	30	10	10	10



Dam - GVC DESIREE F024

"Curvebender deluxe" starting out with a 74 lb BW performing to an 840 lb 205-day weight in Nebraska ranch country

Extra body and mass with "pounds in all the right places" Stock Fund is a keen headed individual who is smooth made yet full featured and powerful in his design

This EPD superstar's donor dam sports an excellent udder with small teat size



Sire - DEER VALLEY GROWTH FUND

Stock Fund

ANGUS | 12

WOIRHAYE

Immensity 2104



K C F BENNETT SOUTHSIDE
MEAD MAGNITUDE
 MEAD PRIMROSE N198

BLACKTOP CASH CROP
M A R JEANNE 1845
 M A R JEANNE 1631



OWNED WITH WOIRHAYE CATTLE CO.



0200AN10478 | Reg # 2304673 | BD: Jan 11, 2021 | **Frame:** - | **BW:** 72 lbs | **WW:** 752 lbs | **YW:** 1301 lbs | **Scrotal:** -

AAA-F24	CED	BW	WW	YW	RADG	DMI	YH	SC	DOC	CLAW	ANGLE	PAP	HP	CEM	MILK	MKH	MW	MH	SEN
EPD	18	-2.2	86	166	0.39	2.17	1.4	2.09	25	0.53	0.55	4.14	6.5	17	38		133	1.4	-59
ACC	0.35	0.55	0.46	0.41	0.33	0.33	0.45	0.39	0.35	0.32	0.32	0.23	0.24	0.30	0.34		0.38	0.40	
RANK %	1	3	10	2	1	95	1	2	20	65	85	95	95	1	3		2	1	95

AAA-F24	CW	MARB	RE	FAT	SM	SF	SG	SB	SC
EPD	79	0.63	0.83	0.013	34	126	54	180	267
ACC	0.39	0.37	0.36	0.34					
RANK %	3	45	25	45	95	5	40	15	35



Sire - MEAD MAGNITUDE



PGD - MEAD PRIMROSE N198

#1 performing and leadoff bull at the 60th anniversary 2022 Midland Bull Test
 #1 efficiency bull and #2 ADG bull with an impressive 4.75 lbs/day
 Incredible curve bender with EPDs of 18 CED & -2.2 BW to a 86 WW and 166 YW
 Pedigree allows for unlimited mating flexibility

Immensity

RIVERBEND

Lawman J053

SYDGEN ENHANCE
S S ENFORCER E812
 S S MISS DAYBREAK K011 3K17

BALDRIDGE COLONEL C251
SPRUCE MTN RITA 8102
 BLACK GOLD RITA 527



OWNED BY RIVERBEND RANCH
 AND BELVIN ANGUS



0200AN10116 | Reg # 2297846 | BD: Feb 4, 2021 | **Frame:** - | **BW:** 75 lbs | **WW:** 762 lbs | **YW:** 1199 lbs | **Scrotal:** 36.6 cm

AAA-F24	CED	BW	WW	YW	RADG	DMI	YH	SC	DOC	CLAW	ANGLE	PAP	HP	CEM	MILK	MKH	MW	MH	SEN
EPD	2	1.2	65	123	0.29	1.26	0	1.05	30	0.41	0.5	1.51	12.1	2	28		43	-0.2	-8
ACC	0.38	0.68	0.50	0.42	0.33	0.33	0.52	0.51	0.35	0.37	0.35	0.28	0.22	0.31	0.31		0.37	0.39	
RANK %	85	50	55	40	25	55	95	40	10	20	60	60	55	95	40		80	95	30

AAA-F24	CW	MARB	RE	FAT	SM	SF	SG	SB	SC
EPD	35	1.14	1.06	-0.031	76	73	84	158	281
ACC	0.41	0.38	0.38	0.36					
RANK %	90	15	15	10	20	85	10	40	30



Progeny at Belvin Angus



Progeny at Belvin Angus

Lawman is a high carcass merit sire produced from the \$115,000 Riverbend Ranch donor Spruce Mtn Rita 8102

Granddam is the \$160,000 famed Express Ranches and Spruce Mountain donor Black Gold Rita 527 who is also the dam of Semex sire Riverbend Upgrade

Lawman was a Riverbend Ranch sale feature selected by Belvin Angus and Semex as one of the very top combinations of exceptional phenotype and structure with leading edge curve bending performance and carcass data

Lawman

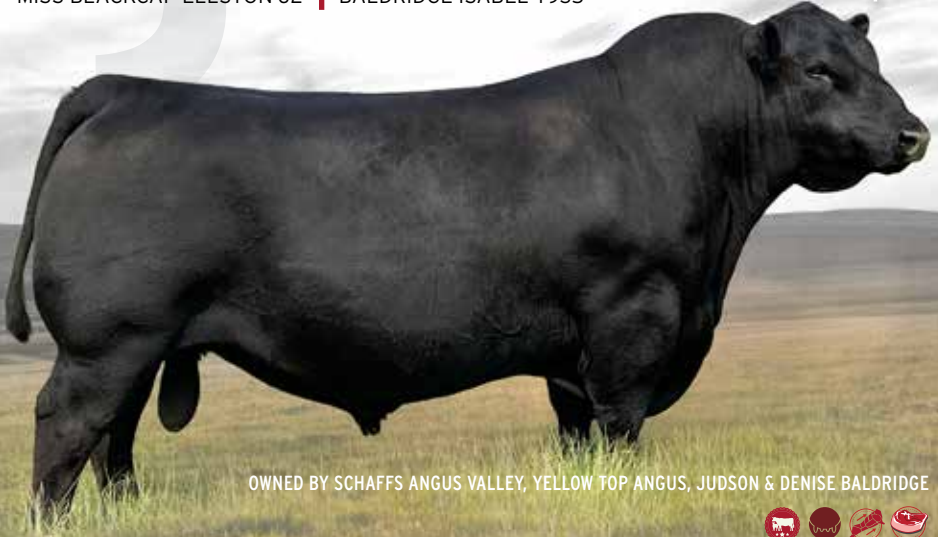
BALDRIDGE

Badger

MOGCK BULLSEYE
HOOVER NO DOUBT
MISS BLACKCAP ELLSTON J2

STYLES UPGRADE J59
BALDRIDGE ISABEL Y69
BALDRIDGE ISABEL T935

\$85



OWNED BY SCHAFFS ANGUS VALLEY, YELLOW TOP ANGUS, JUDSON & DENISE BALDRIDGE



0316AN0465 | Reg # 2237367 | BD: May 12, 2018 | Frame: - | BW: 72 lbs | WW: 692 lbs | YW: 1174 lbs | Scrotal: -

AAA-F24	CED	BW	WW	YW	RADG	DMI	YH	SC	DOC	CLAW	ANGLE	PAP	HP	CEM	MILK	MKH	MW	MH	SEN
EPD	-5	3.7	86	148	0.28	2.06	0.5	1.35	31	0.2	0.33	3.1	12.2	3	14		95	0.7	-26
ACC	0.46	0.81	0.74	0.62	0.40	0.40	0.58	0.51	0.41	0.52	0.38	0.30	0.31	0.37	0.38		0.45	0.47	
RANK %	95	95	10	10	30	95	50	20	5	1	2	90	45	90	95		20	20	75

AAA-F24	CW	MARB	RE	FAT	SM	SF	SG	SB	SC
EPD	70	0.4	1.1	0.002	69	118	47	165	283
ACC	0.46	0.40	0.40	0.37					
RANK %	10	70	10	35	30	15	50	25	25



Progeny at Schaffs Angus Valley



Progeny at Schaffs Angus Valley

Badger is wide based, has a superior foot, lots of eye appeal and is packed with meat and muscle

This easy use sire has a pedigree destined for greatness and an EPD spread that counts

Backed by a dam who is top ranking in the Angus breed for WW & YW, Badger is sure to sire real life performance cattle with ample longevity

Badger

ANGUS | 15

SAV Rise N Shine 2709

S A V RENOWN 3439
S A V RENOVATION 6822
 S A V MADAME PRIDE 0151

S A V 707 RITO 9969
S A V EMBLYNETTE 2369
 S A V EMBLYNETTE 7566



OWNED BY SCHAFFS ANGUS VALLEY
 & SOUTHERN CATTLE CO



0106AN01971 | Reg # 20475057 | BD: Jan 14, 2022 | Frame: - | BW: 89 lbs | WW: 964 lbs | YW: 1620 lbs | Scrotal: 39.3 cm

AAA-F24	CED	BW	WW	YW	RADG	DMI	YH	SC	DOC	CLAW	ANGLE	PAP	HP	CEM	MILK	MKH	MW	MH	SEN
EPD	-2	3.4	66	124	0.31	1.42	0.9	0.96	26	0.39	0.32	1.56	9.9	8	25		103	0.6	-36
ACC	0.36	0.63	0.54	0.43	0.21	0.21	0.34	0.48	0.38	0.31	0.31	0.07	0.16	0.34	0.34		0.23	0.20	
RANK %	95	90	45	35	15	75	15	45	20	15	2	60	70	55	60		15	30	90

AAA-F24	CW	MARB	RE	FAT	SM	SF	SG	SB	SC
EPD	57	0.92	0.5	0.05	45	107	61	169	264
ACC	0.36	0.34	0.33	0.30					
RANK %	30	20	65	85	85	25	25	25	35



Dam - S A V EMBLYNETTE 2369



Sire - S A V RENOVATION 6822

With massive width, depth & volume from front to back, Rise N Shine demonstrates as incredible muscling and power you can put in a phenotypically flawless package

His pathfinder Dam is the #1 carcass cow in the breed, she's a true cornerstone, unmatched in the breed for her combination of phenotype, performance and production

He has an incredible amount of substance and style with a ton of breed-impact potential like his sire, SAV Renovation!

Rise N Shine

SAV

Charisma 3918

LD CAPITALIST 316
MUSGRAVE 316 COLOSSAL 137
 MUSGRAVE LADY BARBARA 545

S A V 707 RITO 9969
S A V EMBLYNETTE 2369
 S A V EMBLYNETTE 7566



OWNED BY MOHNEN ANGUS FARMS
 & SCHAFFS ANGUS VALLEY



0316AN0554 | Reg # 20761391 | BD: Jan 2, 2023 | **Frame:** - | **BW:** 82 lbs | **WW:** 917 lbs | **YW:** 1535 lbs | **Scrotal:** 39.5 cm

AAA-F24	CED	BW	WW	YW	RADG	DMI	YH	SC	DOC	CLAW	ANGLE	PAP	HP	CEM	MILK	MKH	MW	MH	SEN
EPD	2	2.2	69	123	0.31	0.83	0.5	-0.1	27	0.37	0.31	-0.53	13.6	8	24		106	0.6	-37
ACC	0.35	0.51	0.44	0.41	0.31	0.31	0.44	0.49	0.38	0.35	0.35	0.24	0.23	0.35	0.36		0.36	0.38	
RANK %	85	75	40	40	15	25	60	95	15	10	2	20	35	55	70		15	35	95

AAA-F24	CW	MARB	RE	FAT	SM	SF	SG	SB	SC
EPD	58	0.92	0.49	0.004	57	113	64	177	287
ACC	0.37	0.36	0.35	0.33					
RANK %	40	30	75	35	70	15	30	20	25



Dam - S A V EMBLYNETTE 2369



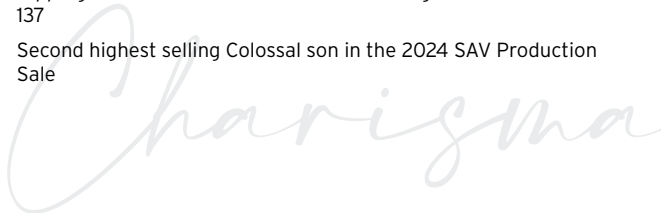
Maternal Sibling - S A V EMBLYNETTE 1167

One of the greatest phenotypic and genetic packages SAV have ever produced with an unmatched combination of maternal, muscle, marbling, feet quality and disposition

His dam needs little introduction as the #1 beef value cow in the SAV herd. She recorded an astonishing IMF ratio of 121 on 118 progeny!

Maternal sibling to Rise N Shine among many other sale topping bulls and son of Semex's famed Musgrave 316 Colossal 137

Second highest selling Colossal son in the 2024 SAV Production Sale



PEAK DOT

Trust

86G

CONNEALY EARNAN 076E
ELLINGSON ROUGHRIDER 4202
 EA BLACKLASS 8914

HOOVER NO DOUBT
PEAK DOT QUEEN 303D
 QUEEN OF PEAK DOT 903W



OWNED WITH PEAK DOT RANCH



0200ANI0775 | Reg # 2111614 | BD: Jan 25, 2019 | **Frame:** 6.1 | **BW:** 80 lbs | **WW:** 895 lbs | **YW:** 1425 lbs | **Scrotal:** 39.0 cm

AAA-F24	CED	BW	WW	YW	RADG	DMI	YH	SC	DOC	CLAW	ANGLE	PAP	HP	CEM	MILK	MKH	MW	MH	SEN
EPD	1	1.6	65	126	0.27	1.38	0.7	1.44	23	0.46	0.34	1.56	11.9	12	26		100	0.6	-35
ACC	0.43	0.84	0.74	0.64	0.36	0.36	0.51	0.45	0.36	0.29	0.29	0.25	0.26	0.45	0.38		0.41	0.43	
RANK %	85	60	50	35	35	75	30	20	30	35	3	60	50	20	50		15	30	90

AAA-F24	CW	MARB	RE	FAT	\$M	\$F	\$G	\$B	\$C
EPD	60	0.51	0.69	0.051	49	117	44	161	258
ACC	0.44	0.36	0.35	0.33					
RANK %	25	60	40	85	80	15	60	30	45



Dam - PEAK DOT QUEEN 303D



Progeny at Peak Dot Ranch - PEAK DOT 38K

Absolute standout acclaimed to be the most powerful sire ever produced in the Peak Dot Ranch program

Big topped and square hiped with massive volume and muscle dimension combined with breed leading growth and carcass figures

Powerful pedigree steeped in outstanding phenotype being an Ellingson Roughrider x Hoover No Doubt

Dam ranks as one of the very best No Doubt daughters in the Peak Dot herd

Trust

S A V

Courage 3003

LD CAPITALIST 316
MUSGRAVE 316 COLOSSAL 137
 MUSGRAVE LADY BARBARA 545

S A V RESOURCE 1441
S A V MADAME PRIDE 4407
 S A V MADAME PRIDE 0235



OWNED BY SCHAFFS ANGUS VALLEY,
 KYLE HART & ELITE FEEDERS LLC



316AN0553 | Reg # 20761396 | BD: Jan 25, 2023 | **Frame:** - | **BW:** 77 lbs | **WW:** 997 lbs | **YW:** 1645 lbs | **Scrotal:** 44.1 cm

AAA-F24	CED	BW	WW	YW	RADG	DMI	YH	SC	DOC	CLAW	ANGLE	PAP	HP	CEM	MILK	MKH	MW	MH	SEN
EPD	7	1	65	113	0.24	0.94	0.2	1.44	19	0.33	0.41	0.09	9.8	7	23		65	0.2	-16
ACC	0.05	0.05	0.05	0.05	0.05	0.05	0.05	0.38	0.05	0.25	0.25	0.05	0.05	0.05	0.05		0.05	0.05	
RANK %	45	45	55	60	65	35	85	20	55	4	20	30	80	65	75		55	70	50

AAA-F24	CW	MARB	RE	FAT	\$M	\$F	\$G	\$B	\$C
EPD	57	0.47	0.86	0.001	63	96	48	143	248
ACC	0.23	0.22	0.22	0.19					
RANK %	40	75	30	30	55	45	60	60	60



Dam - S A V MADAME PRIDE 4407



Maternal Sibling - S A V MADAME PRIDE 9851

\$150,000 lead-off bull of the 2024 SAV sale and the highest selling Colossal son in the offering

He balances phenotype, performance, and maternal quality in a low birth weight package

Courage earned a 205 day weight of 997 lbs, a 365 day weight of 1656 lbs, a 365-day ribeye of 17.5 inches and 365 scrotal of 44.1 cm!

Long-bodied and heavy muscled as you can make, he's one with real herd bull presence and high fertility

His Pathfinder dam, SAV Madame Pride 4407, is a current breed leader positioned among the greatest females to ever walk the pastures at Schaffs

SQUARE B

Atlantic 8060

COLEMAN CHARLO 0256
S A V RAINFALL 6846
 S A V BLACKCAP MAY 4136

CONNEALY CONSENSUS
ELBANNA OF CONANGA 1209
 ELBASTA OF CONANGA 9703



OWNED BY MONTANA RANCH LLC
 & BEARTOOTH ANGUS



0271AN4775 | Reg # 2192495 | BD: Aug 24, 2018 | **Frame: 5.5** | **BW: 84 lbs** | **WW: 711 lbs** | **YW: 1169 lbs** | **Scrotal: -**

AAA-F24	CED	BW	WW	YW	RADG	DMI	YH	SC	DOC	CLAW	ANGLE	PAP	HP	CEM	MILK	MKH	MW	MH	SEN
EPD	2	1.3	63	108	0.27	0.34	-0.1	1.26	19	0.39	0.52	-0.19	14.2	5	30		47	-0.1	-11
ACC	0.75	0.94	0.91	0.87	0.43	0.43	0.87	0.86	0.82	0.75	0.75	0.35	0.62	0.74	0.70		0.62	0.66	
RANK %	80	50	55	60	35	15	95	25	50	15	70	20	25	80	25		70	85	40

AAA-F24	CW	MARB	RE	FAT	SM	SF	SG	SB	SC
EPD	37	0.67	1.04	0.017	73	87	58	145	261
ACC	0.54	0.49	0.50	0.45					
RANK %	75	40	10	50	25	65	30	50	40

Rock solid genetics covering all the bases and checking all the boxes!

Highly maternal sire with top level docility and foot quality in a stout made and powerfully built body type with an abundance of mass and volume in an eye pleasing package

Produced from the \$125,000 pick of the Connealy Angus females



Progeny - MONTANA JOANIE 1037



Progeny - MONTANA JUDGEMENT 1038



Dam - ELBANNA OF CONANGA 1209

S A V AMERICAN

Legend 0029

S A V PRESIDENT 6847
S A V AMERICA 8018
 S A V MADAME PRIDE 0075

S A V 004 DENSITY 4336
S A V EMBLYNETTE 3293
 S A V EMBLYNETTE 7411



OWNED WITH SCHAFFS ANGUS VALLEY



0200ANI0785 | Reg # 2206294 | BD: Feb 18, 2020 | Frame: - | BW: 67 lbs | WW: 991 lbs | YW: 1473 lbs | Scrotal: 40.1 cm

AAA-F24	CED	BW	WW	YW	RADG	DMI	YH	SC	DOC	CLAW	ANGLE	PAP	HP	CEM	MILK	MKH	MW	MH	SEN
EPD	10	-0.6	74	114	0.2	1.08	0.5	1.33	23	0.41	0.48	-0.34	9.7	7	22		77	0.4	-21
ACC	0.37	0.64	0.55	0.47	0.26	0.26	0.38	0.39	0.38	0.19	0.19	0.05	0.17	0.24	0.24		0.29	0.26	
RANK %	25	15	25	50	85	55	50	20	30	20	50	20	75	65	75		35	45	65

AAA-F24	CW	MARB	RE	FAT	\$M	\$F	\$G	\$B	\$C
EPD	50	0.67	0.65	0.013	61	84	54	138	240
ACC	0.27	0.23	0.23	0.21					
RANK %	50	40	45	45	50	70	40	60	60



Dam - S A V EMBLYNETTE 3293



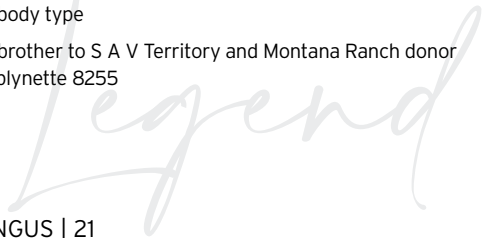
Sire - S A V AMERICA 8018

The only America son in the entire breed with his elite curve bender stats of -0.6 BW to 114 YW as well as having the lowest BW EPD of the entire S A V 2021 sale offering

At the very top of the list with breeders looking for a Calving Ease sire with more mass and dominating body shape

Front pasture donor dam by Density is a fifth generation S A V donor and a herd favorite with impeccable udder quality and beautiful body type

Maternal brother to S A V Territory and Montana Ranch donor S A V Emblynette 8255



CONLEY

Expression 9213

SMA WATCHOUT 482
CONLEY EXPRESS 7211
 DPL SANDY 3040

P R BLACK FRIDAY 0244
DOUBLE R BAR PURE PRIDE Z246
 BOHI PURE PRIDE 6096



OWNED WITH CONLEY CATTLE

0200ANI0358 | Reg # 2168889 | BD: Feb 24, 2019 | Frame: 5.8 | BW: 82 lbs | WW: - | YW: 1390 lbs | Scrotal: 37.0 cm

AAA-F24	CED	BW	WW	YW	RADG	DMI	YH	SC	DOC	CLAW	ANGLE	PAP	HP	CEM	MILK	MKH	MW	MH	SEN
EPD	-2	4.6	70	114	0.27	0.41	0.6	0.51	21	0.48	0.36	1.96	5.4	-2	19		118	0.8	-40
ACC	0.38	0.69	0.54	0.42	0.30	0.30	0.45	0.39	0.32	0.22	0.22	0.22	0.20	0.31	0.33		0.37	0.39	
RANK %	95	95	35	50	35	15	40	75	40	45	4	70	95	95	90		5	15	95

AAA-F24	CW	MARB	RE	FAT	SM	SF	SG	SB	SC
EPD	33	0.24	0.53	-0.022	17	91	34	125	179
ACC	0.36	0.33	0.32	0.30					
RANK %	80	85	60	15	95	55	80	75	95



Dam - DOUBLE BAR PURE PRIDE Z246



Full Sibling - CONLEY PURE PRIDE 982

Powerfully designed with superior phenotype and an exceptional look

His donor dam, Double R Bar Pure Pride Z246, is the preeminent donor in the Conley program with numerous sale toppers and show winners to her credit

Expression was the lead off Lot 1 in the 2020 Conley sale and gathered much admiration and attention while on display in Denver 2020

Expression

NORTH CAMP

Silver Star 5103

LCC NEW STANDARD
R B ACTIVE DUTY 0010X
 B A LADY 6807 305

WK POW-WOW
MALSONS JILT 13Z
 LAF LINS JILT 8302



OWNED WITH GUY LEWIS LAF LIN & HAMILTON FARMS

0200AN10730 | Reg # 2019661 | BD: Feb 2, 2015 | **Frame:** - | **BW:** 84 lbs | **WW:** 810 lbs | **YW:** 1285 lbs | **Scrotal:** 36.0 cm

AAA-F24	CED	BW	WW	YW	RADG	DMI	YH	SC	DOC	CLAW	ANGLE	PAP	HP	CEM	MILK	MKH	MW	MH	SEN
EPD	3	0.7	51	94	0.23	0.35	0.4	0.71	25	0.45	0.51	1.21	10.5	6	18		68	0.6	-14
ACC	0.63	0.88	0.85	0.73	0.40	0.40	0.62	0.65	0.48	0.31	0.30	0.26	0.30	0.57	0.60		0.45	0.46	
RANK %	75	40	85	80	65	15	65	60	20	30	65	55	65	70	95		45	30	50

AAA-F24	CW	MARB	RE	FAT	SM	SF	SG	SB	SC
EPD	39	0.63	0.6	0.041	42	105	49	155	243
ACC	0.48	0.43	0.44	0.39					
RANK %	70	45	55	80	90	30	50	40	55



Progeny at North Camp Angus

Progeny are deep ribbed and with added capacity
 An excellent double digit calving ease option with added eye appeal and balance
 Very strong foot structure and soundness



Progeny at Merit Cattle Co

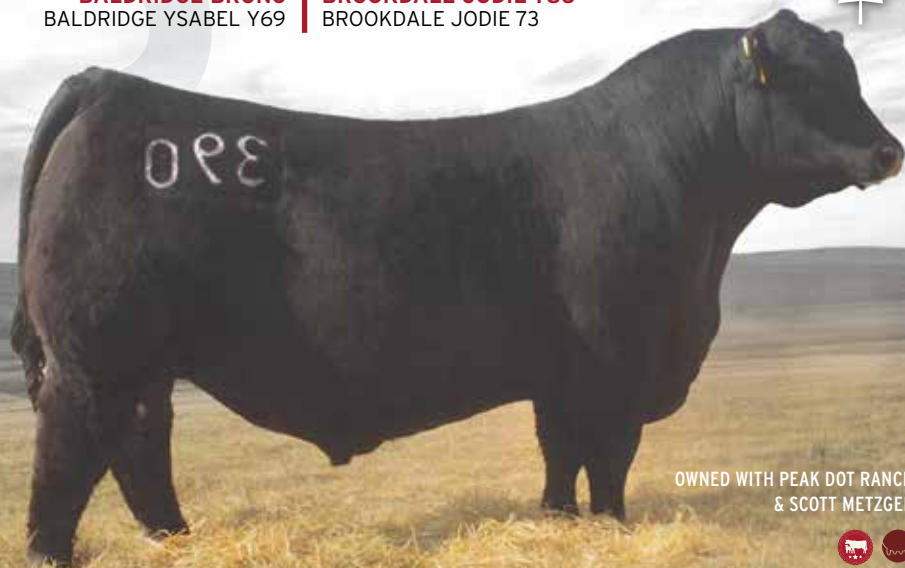
Silver Star

BROOKDALE

Brutus 390

EF COMMANDO 1366
BALDRIDGE BRONC
 BALDRIDGE YSABEL Y69

S A V RESOURCE 1441
BROOKDALE JODIE 786
 BROOKDALE JODIE 73



OWNED WITH PEAK DOT RANCH
 & SCOTT METZGER



0200ANI0112 | Reg # 2248553 | BD: Jan 23, 2020 | **Frame:** 6.0 | **BW:** 85 lbs | **WW:** 894 lbs | **YW:** 1514 lbs | **Scrotal:** 42.0 cm

AAA-F24	CED	BW	WW	YW	RADG	DMI	YH	SC	DOC	CLAW	ANGLE	PAP	HP	CEM	MILK	MKH	MW	MH	SEN
EPD	5	1.9	97	159	0.24	2.08	0.3	0.98	5	0.36	0.42	0.26	15.8	7	28		100	0.1	-36
ACC	0.59	0.85	0.81	0.75	0.41	0.41	0.65	0.56	0.45	0.32	0.31	0.30	0.27	0.48	0.36		0.45	0.46	
RANK %	60	65	1	3	60	95	70	45	95	10	20	30	15	65	40		15	75	90

AAA-F24	CW	MARB	RE	FAT	SM	\$F	\$G	\$B	SC
EPD	56	0.73	0.62	0.085	77	80	51	131	247
ACC	0.51	0.42	0.43	0.40					
RANK %	35	35	50	95	15	75	45	65	50



Progeny at Peak Dot Ranch - PDAR 2023K



Progeny at Peak Dot Ranch - PDAR 2011K

One of the most exciting and highly regarded sires to enter stud in 2021

Backed by a highly maternal cow family with two of the most influential cows in the entire Angus breed, Baldrige Isabel Y69 and S A V Blackcap May 4136, in his pedigree make up

The heaviest weaning and yearling weight bull of Brookdale's entire calf crop along with the highest IMF scan.

Brutus

LVVF

Tanker 14

KM BROKEN BOW 002
CASINO BOMBER N33
 CASINO ANNIE K48

V A R LEGEND 5019
LVVF LEGEND 842
 LVVF BULLSEYE 1154



OWNED WITH PEAK DOT RANCH



0200ANI0804 | Reg # 2301455 | BD: Jan 7, 2021 | **Frame:** - | **BW:** 84 lbs | **WW:** 842 lbs | **YW:** 1592 lbs | **Scrotal:** 42.5 cm

AAA-F24	CED	BW	WW	YW	RADG	DMI	YH	SC	DOC	CLAW	ANGLE	PAP	HP	CEM	MILK	MKH	MW	MH	SEN
EPD	8	0.9	90	163	0.33	2.25	1.1	1.25	26	0.37	0.36	4.9	16.5	6	27		119	1.3	-45
ACC	0.56	0.86	0.76	0.52	0.37	0.37	0.51	0.39	0.36	0.30	0.30	0.30	0.26	0.33	0.35		0.42	0.43	
RANK %	35	45	3	2	5	95	5	25	20	10	4	95	10	70	45		5	2	95

AAA-F24	CW	MARB	RE	FAT	SM	\$F	\$G	\$B	\$C
EPD	95	0.88	1.26	-0.019	73	147	73	220	358
ACC	0.45	0.39	0.39	0.36					
RANK %	1	25	2	15	25	1	15	2	1



Progeny - PEAK DOT TANKER 2122L



Progeny - PEAK DOT TANKER 2152L

A complete total package sire with one of the best EPD profiles in the Semex Beef Angus lineup

Tanker is a massive bodied, wide and deep made individual that had a yearling scan day weight of 1592 lbs and a 42.5 cm scrotal

Tanker combines top ranking EPDs, phenotype, muscle, capacity and soundness with fertility and performance all set on great feet with strong heel depth and excellent claw shape.

Tanker

ANGUS | 25

SCHIEFELBEIN

Attractive 4565

SITZ TOP GAME 561X
JMB TRACTION 292
 JMB EMULOTA 013

S A V FINAL ANSWER 0035
FROSTY ANSWER 3979
 FROSTY ELBA LIZZY 1106



OWNED WITH SCHIEFELBEIN ANGUS FARM & PEAK DOT RANCH



0200ANI0728 | Reg # 1938699 | BD: Mar 20, 2015 | Frame: 6.2 | BW: 85 lbs | WW: 860 lbs | YW: 1484 lbs | Scrotal: 38.3 cm

AAA-F24	CED	BW	WW	YW	RADG	DMI	YH	SC	DOC	CLAW	ANGLE	PAP	HP	CEM	MILK	MKH	MW	MH	SEN
EPD	4	2.8	84	154	0.31	1.88	0.8	0.88	32	0.47	0.41	1.51	8.6	0	29		84	0.6	-29
ACC	0.73	0.93	0.90	0.85	0.45	0.45	0.79	0.74	0.68	0.61	0.61	0.30	0.42	0.75	0.73		0.62	0.69	
RANK %	70	85	10	5	15	95	20	50	3	40	15	60	85	95	30		30	30	80

AAA-F24	CW	MARB	RE	FAT	SM	\$F	\$G	\$B	\$C
EPD	52	0.65	0.43	0.009	63	93	51	143	248
ACC	0.55	0.49	0.50	0.46					
RANK %	45	45	75	40	45	50	45	50	50



Dam - FROSTY ANSWER 3979



Progeny - SCHIEFELBEIN SHOWMAN 338

One of the most popular individuals with breeders across the globe when viewed in stud due to his stout featured and massive body design with tremendous foot shape and heel depth

Sale topping sons at \$125,000, \$70,000 & \$60,000

Genomic ranking in the top 10% or higher for WW & YW

Positive scan data posting a 116 ratio for IMF

Attractive

SAV

Maxima 1273



K C F BENNETT SOUTHSIDE
MEAD MAGNITUDE
 MEAD PRIMROSE N198

S A V PRESIDENT 6847
S A V MADAME PRIDE 9962
 S A V MADAME PRIDE 3145



OWNED WITH SCHAFFS ANGUS VALLEY



0200ANI0459 | Reg # 2266632 | BD: Mar 4, 2021 | **Frame:** - | **BW:** 85 lbs | **WW:** 1026 lbs | **YW:** 1685 lbs | **Scrotal:** 37.1 cm

AAA-F24	CED	BW	WW	YW	RADG	DMI	YH	SC	DOC	CLAW	ANGLE	PAP	HP	CEM	MILK	MKH	MW	MH	SEN
EPD	0	6	108	186	0.34	2.69	1.3	0.83	29	0.41	0.45	1.27	9.9	8	31		140	1.6	-58
ACC	0.39	0.59	0.47	0.43	0.35	0.35	0.46	0.48	0.46	0.30	0.30	0.25	0.25	0.33	0.35		0.40	0.42	
RANK %	90	95	1	1	4	95	2	55	10	20	35	55	75	55	20		2	1	95

AAA-F24	CW	MARB	RE	FAT	SM	SF	SG	SB	SC
EPD	79	0.58	1.1	-0.089	60	107	62	169	279
ACC	0.40	0.39	0.38	0.36					
RANK %	5	65	10	1	65	25	30	30	30



Dam - S A V MADAME PRIDE 9962



MGD - S A V MADAME PRIDE 3145

High octane outcross who shattered the EPD barriers at the 2022 SAV sale being the #1 Weaning, #2 Yearling and #1 Carcass weight bull in the entire SAV bull sale offering

His beautiful dam ranks as the #2 Weaning and #3 Yearling EPD cow in the entire SAV herd

His pathfinder granddam, SAV Madame Pride 3145, is a SAV herd favorite with unmatched femininity, fertility, and feet and udder quality. She records a progeny IMF ratio of 117 and ribeye ratio of 103 on 26 progeny scanned. She is the third top income producing cow in the SAV herd with 21 daughters retained and 20 progeny highlighting past SAV sales including the \$225,000 SAV Anthem and the \$200,000 SAV Circuit Breaker



ELLINGSON

Profound

8155

TEHAMA REVERE
S POWERPOINT WS 5503
 S QUEEN ESSA 248

CONNELLY CAPITALIST 028
EA ROSETTA 6157
 EA BLACKBIRD 0038



OWNED WITH PEAK DOT RANCH
 & ELLINGSON ANGUS



0200ANI0796 | Reg # 2087909 | BD: Feb 25, 2018 | **Frame:** 6.0 | **BW:** 86 lbs | **WW:** 911 lbs | **YW:** 1428 lbs | **Scrotal:** 38.7 cm

AAA-F24	CED	BW	WW	YW	RADG	DMI	YH	SC	DOC	CLAW	ANGLE	PAP	HP	CEM	MILK	MKH	MW	MH	SEN
EPD	2	4.1	88	138	0.22	1.34	0.4	1.07	16	0.07	0.06	0.36	15.1	9	6		73	0.3	-10
ACC	0.60	0.85	0.85	0.85	0.41	0.41	0.67	0.81	0.84	0.79	0.76	0.28	0.62	0.69	0.63		0.46	0.46	
RANK %	80	95	4	20	75	70	65	35	65	1	1	30	20	45	95		40	55	40

AAA-F24	CW	MARB	RE	FAT	SM	SF	SG	SB	SC
EPD	67	0.39	0.47	0.053	91	111	35	147	282
ACC	0.49	0.43	0.45	0.39					
RANK %	15	70	70	90	3	20	75	45	25



Progeny at Ellingson Angus



Progeny at Peak Dot Ranch

Profound sons have been the featured sire group in both Ellingson Angus and Peak Dot Ranch Bull sales the past few years

Weaned off his two year old dam at 911 lbs then matured into a power packed muscular, high volume individual and one of the strongest footed sires we've come across

Fantastic foot EPDs with CLAW and ANGLE ranking in the top 1% of the Angus breed

Profound

POSS

Tenderloin

BASIN PAYWEIGHT 1682

POSS MAVERICK

POSS PRIDE 5163

POSS ELEMENT 215

POSS PRIDE 515

POSS PRIDE 379

\$30

OWNED WITH DANNY POSS
& PEAK DOT RANCH0200AN10799 | Reg # 2245856 | BD: Feb 10, 2020 | **Frame:** 5.2 | **BW:** 87 lbs | **WW:** 724 lbs | **YW:** 1453 lbs | **Scrotal:** 39.7 cm

AAA-F24	CED	BW	WW	YW	RADG	DMI	YH	SC	DOC	CLAW	ANGLE	PAP	HP	CEM	MILK	MKH	MW	MH	SEN
EPD	3	1.4	86	153	0.34	1.19	0.5	0.94	25	0.67	0.5	0.67	11.3	6	29		130	0.6	-52
ACC	0.54	0.80	0.72	0.63	0.39	0.39	0.57	0.48	0.37	0.32	0.32	0.27	0.27	0.38	0.36		0.43	0.45	
RANK %	75	55	10	5	4	60	50	45	20	95	60	40	55	70	30		2	30	95

AAA-F24	CW	MARB	RE	FAT	SM	SF	SG	SB	SC
EPD	71	1.18	0.48	0.076	38	127	72	198	295
ACC	0.48	0.39	0.39	0.37					
RANK %	10	10	70	95	95	5	15	5	15



Progeny at Peak Dot Ranch



Progeny at Peak Dot Ranch

High marbling genetics with more power and mass in a big outlined body design with eye appeal

Tenderloin is an attractive, thick made sire that combines calving-ease, performance, carcass and maternal traits along with a big scrotal and gentle disposition

Dam is one of the top regarded females in the highly productive Poss Angus herd

Tenderloin

RIVERBEND

Upgrade

8605

V A R DISCOVERY 2240
DIABLO DELUXE 1104
 DIABLO ERICA DIANNA 9034

PLATTEMERE WEIGH UP K360
BLACK GOLD RITA 527
 GAR/DRMCTR OBJECTIVE 9J86



OWNED WITH RIVERBEND RANCH
 & SPRUCE MOUNTAIN RANCH LLC



0200ANI0376 | Reg # 2163372 | BD: Oct 11, 2018 | Frame: 6.2 | BW: 74 lbs | WW: 669 lbs | YW: 1163 lbs | Scrotal: 37.0 cm

AAA-F24	CED	BW	WW	YW	RADG	DMI	YH	SC	DOC	CLAW	ANGLE	PAP	HP	CEM	MILK	MKH	MW	MH	SEN
EPD	2	2.1	94	167	0.34	2.74	1.3	1.18	21	0.41	0.48	2.54	11.4	14	20		144	1.3	-54
ACC	0.47	0.81	0.75	0.67	0.40	0.40	0.57	0.49	0.40	0.31	0.31	0.30	0.34	0.50	0.39		0.44	0.46	
RANK %	80	70	2	2	4	95	2	30	40	20	50	80	55	10	85		1	2	95

AAA-F24	CW	MARB	RE	FAT	SM	SF	SG	SB	SC
EPD	82	1.03	0.42	0.019	45	125	68	193	295
ACC	0.50	0.45	0.46	0.41					
RANK %	2	15	75	55	85	10	20	10	15



Dam - BLACK GOLD RITA 527



Maternal Sibling - SPRUCE MTN RITA 8586

Muscular and sound moving with tremendous body mass all on a solid sound well shaped foot

Backed by an exceptional dam that was the \$160,000 top selling female of the 2019 Spruce Mountain sale with full sisters to Larkspur commanding \$100,000 and \$50,000

Top 2% WW, YW, YH, MH, CW, Top 10% CEM, SF, \$B

Upgrade

ANGUS | 30



EF COMMANDO 1366
BALDRIDGE 38 SPECIAL
 BALDRIDGE ISABEL Y69

STYLES CASH R24
MOGCK RUTH 1686
 MOGCK RUTH 264



OWNED WITH MOGCK & SONS



0200AN10760 | Reg # 2079512 | BD: Dec 23, 2017 | Frame: 5.8 | BW: 65 lbs | WW: 839 lbs | YW: 1372 lbs | Scrotal: 40.0 cm

AAA-F24	CED	BW	WW	YW	RADG	DMI	YH	SC	DOC	CLAW	ANGLE	PAP	HP	CEM	MILK	MKH	MW	MH	SEN
EPD	9	-1.3	68	126	0.25	1.57	0.4	1.07	31	0.39	0.41	1.32	13.2	9	40		26	0	-6
ACC	0.58	0.78	0.63	0.48	0.34	0.34	0.47	0.48	0.34	0.27	0.27	0.23	0.26	0.37	0.33		0.39	0.41	
RANK %	30	10	45	35	60	80	70	40	5	15	20	55	40	45	2		95	85	25

AAA-F24	CW	MARB	RE	FAT	SM	SF	SG	SB	SC
EPD	53	0.86	0.26	0.085	98	98	53	151	294
ACC	0.40	0.37	0.36	0.34					
RANK %	50	35	95	95	2	40	50	50	20



Sire - BALDRIDGE 38 SPECIAL



PGD - BALDRIDGE ISABEL Y69

Curve bending Calving Ease sire with top level performance

Actual data backs up genomic data with BW ratio 86, WW ratio 111 and YW ratio 106

Rock solid proven calving ease with performance in a powerful and well-built body design

RAVEN

Nevada G100

KM BROKEN BOW 002
SPRING COVE RENO 4021
 SPRING COVE LIZA 021

PA VALOR 201
RAVEN BLACKBIRD BLACKIE E300
 RAVEN BLACKBIRD BLACKIE 1241



OWNED WITH RAVEN ANGUS



0200ANI0360 | Reg # 2141813 | BD: Jan 14, 2019 | **Frame:** - | **BW:** 90 lbs | **WW:** 911 lbs | **YW:** 1409 lbs | **Scrotal:** 41.0 cm

AAA-F24	CED	BW	WW	YW	RADG	DMI	YH	SC	DOC	CLAW	ANGLE	PAP	HP	CEM	MILK	MKH	MW	MH	SEN
EPD	14	0.5	73	125	0.23	1.48	0.7	1.22	21	0.47	0.58	1.6	21.1	14	23		40	0.3	-3
ACC	0.64	0.80	0.72	0.62	0.38	0.38	0.54	0.64	0.36	0.29	0.29	0.27	0.39	0.39	0.36		0.43	0.43	
RANK %	5	35	30	35	65	80	30	30	40	40	95	60	1	10	70		75	55	25

AAA-F24	CW	MARB	RE	FAT	SM	SF	SG	SB	SC
EPD	51	0.97	0.95	0.001	103	93	73	166	318
ACC	0.46	0.39	0.40	0.37					
RANK %	45	20	15	35	1	50	15	25	10



Sire - SPRING COVE RENO 4021



PGD - SPRING COVE LIZA 021

Phenotypically appealing individual being attractive in his look, sound structured in his build and massive in his design

Outstanding son of the popular and deceased Spring Cove Reno

Exceptional 156 Marbling index while also having the largest actual Ribeye scan of all his contemporaries to index 116 REA

Stemming from a solid cow family with his granddam being a Pathfinder and a model Angus cow

Nevada

ANGUS | 32

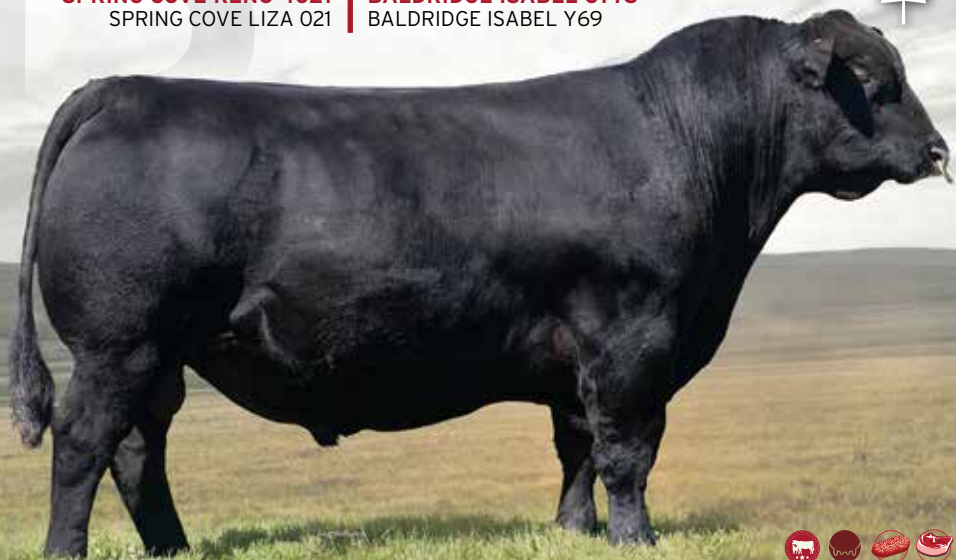
PINE VIEW

Mogul G241



KM BROKEN BOW 002
SPRING COVE RENO 4021
 SPRING COVE LIZA 021

BALDRIDGE XPAND X743
BALDRIDGE ISABEL C773
 BALDRIDGE ISABEL Y69



0200AN10840 | Reg # 2233520 | BD: Jan 28, 2019 | **Frame:** - | **BW:** 65 lbs | **WW:** 649 lbs | **YW:** - | **Scrotal:** 39.0 cm

AAA-F24	CED	BW	WW	YW	RADG	DMI	YH	SC	DOC	CLAW	ANGLE	PAP	HP	CEM	MILK	MKH	MW	MH	SEN
EPD	4	1.6	77	136	0.29	1.56	0.7	0.88	19	0.2	0.34	2.45	15.2	13	36		59	0.6	-20
ACC	0.67	0.85	0.81	0.71	0.32	0.32	0.45	0.54	0.38	0.43	0.43	0.27	0.27	0.34	0.34		0.39	0.40	
RANK %	70	60	20	20	20	85	30	50	50	1	3	80	20	10	5		55	30	60

AAA-F24	CW	MARB	RE	FAT	SM	\$F	\$G	\$B	\$C
EPD	56	0.97	1.1	-0.038	96	96	77	173	320
ACC	0.48	0.42	0.43	0.39					
RANK %	35	20	10	5	2	45	10	20	10



MGD - BALDRIDGE ISABEL Y69



Full Sister - RRR ISABEL R2638

Exciting sire who offers multi trait excellence with a powerful phenotype package from head to toe. Mogul will stop you in your tracks for a second look!

Top of the charts foot EPDs with exceptional carcass merit and leading growth lending to top 2% \$Maternal, 20% \$Beef and 10% \$C rankings

Dam is a direct daughter of the famed Baldrige Isabel Y69 and is a leading donor in the Reverse Rocking R Ranch program

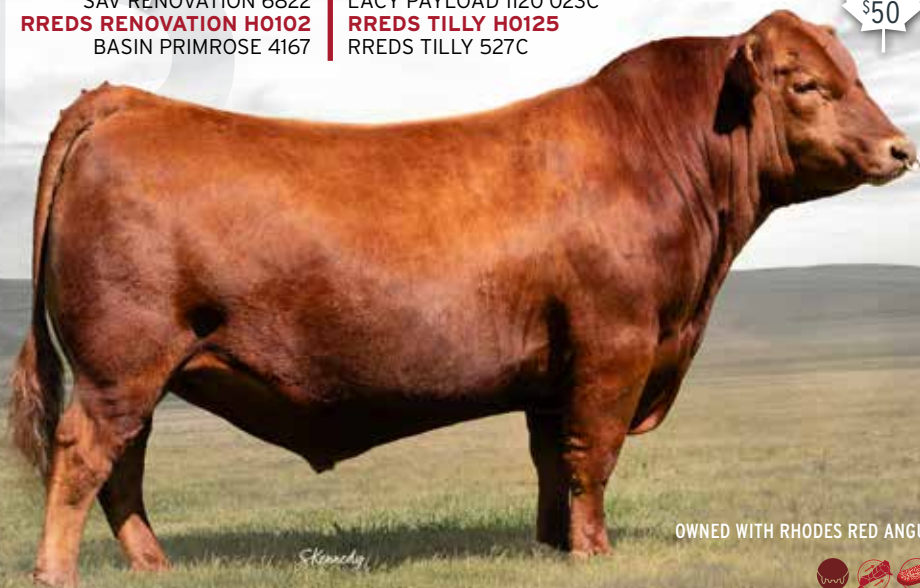
Mogul

RREDS

Revolution K248

SAV RENOVATION 6822
RREDS RENOVATION H0102
 BASIN PRIMROSE 4167

LACY PAYLOAD 1120 023C
RREDS TILLY H0125
 RREDS TILLY 527C



OWNED WITH RHODES RED ANGUS



0200AR20319 | Reg # 2336711 | BD: Jan 30, 2022 | Frame: - | BW: 74 lbs | WW: 772 lbs | YW: 1259 lbs | Scrotal: 37.0 cm

RAAA-F24	CE	BW	WW	YW
EPD	11	-1.6	67	113
ACC	0.41	0.46	0.41	0.43
RANK %	71	54	41	30

RAAA-F24	ADG	DMI	MILK	ME
EPD	0.29	0.97	30	17
ACC	0.43	0.27	0.15	0.06
RANK %	20	78	12	97

RAAA-F24	MARB	CW	REA	FAT
EPD	0.76	41	0.16	0.04
ACC	0.34	0.35	0.34	0.30
RANK %	7	5	48	84

RAAA-F24	HPG	CEM	STAY	YG
EPD	12	5	15	0.17
ACC	0	0.20	0.27	0.28
RANK %	48	90	46	94



PGS - SAV RENOVATION 6822

Unique fresh pedigree bringing the great SAV Renovation to the Red Angus breed

Calving ease with maternal superiority in a sound structured well-built body type

Will improve udders and fleshing ability

Revolution

NSFR

Sovereign L49

LASO BUCKET LIST E8G
NIO AMERICAN FREEDOM 1005
 NIO LAKOTA 9251

BIEBER HARD DRIVE Y120
NSFR BRANDY D245
 NSFR BRANDY U143



OWNED WITH NORDLUND STOCK FARM



0200AR20730 | Reg # RA4801980 | BD: Feb 22, 2023 | Frame: - | BW: 75 lbs | WW: 727 lbs | YW: 1308 lbs | Scrotal: 38.0 cm

RAAA-F24	CE	BW	WW	YW
EPD	16	-4.6	75	117
ACC	0.44	0.49	0.46	0.47
RANK %	14	9	17	23

RAAA-F24	MARB	CW	REA	FAT
EPD	1.02	17	0.05	0.06
ACC	0.37	0.40	0.37	0.33
RANK %	1	73	71	98

RAAA-F24	ADG	DMI	MILK	ME
EPD	0.26	0.69	27	10
ACC	0.47	0.30	0.16	0.08
RANK %	36	46	36	84

RAAA-F24	HPG	CEM	STAY	YG
EPD	14	7	16	0.17
ACC	0	0.22	0.31	0.31
RANK %	18	43	33	94



Sire - NIO AMERICAN FREEDOM 1005



MGS - BIEBER HARD DRIVE Y120

NIO American Freedom son who is very correct in his structure carrying tons of rib shape

Double digit Calving Ease sire with excellent performance EPDs ranking in the top 25% of the breed or better for WW and YW

Sovereign

RED ANGUS | 35

DAHLKE

Outcome 016H

COLLIER FINAL PRODUCT B389
COLLIER FINISHED PRODUCT
 COLLIER AMY B385

ANDRAS FUSION R236
DAHLKE MS. SANDY 271C
 DAHLKE TRENDY SANDI 127U



0200AR20727 | Reg # 2201271 | BD: Feb 28, 2020 | **Frame:** - | **BW:** 73 lbs | **WW:** 680 lbs | **YW:** 1315 lbs | **Scrotal:** 42.0 cm

RAAA-F24	CE	BW	WW	YW
EPD	22	-7.6	64	113
ACC	0.57	0.65	0.60	0.59
RANK %	1	1	59	37

RAAA-F24	ADG	DMI	MILK	ME
EPD	0.31	1.44	23	5
ACC	0.59	0.36	0.22	0.17
RANK %	17	94	75	55

RAAA-F24	MARB	CW	REA	FAT
EPD	0.39	25	0.11	0.05
ACC	0.44	0.46	0.43	0.37
RANK %	55	45	55	92

RAAA-F24	HPG	CEM	STAY	YG
EPD	12	14	15	0.17
ACC	0.26	0.31	0.36	0.36
RANK %	43	1	48	86



Progeny - Dahlke Red Angus



Sire - COLLIER FINISHED PRODUCT

Breed leading curvebending sire! Elite Calving Ease and growth with a fresh outcross pedigree

Correct-made, long bodied and easy fleshing individual with a pleasing and attractive look

Sleep all night, heifer-safe sire who excels in all measurable traits and indexes

Outcome

RED ANGUS | 36

RAML

Dayload 9500

SLGN WIDELOAD 920W
PELTON WIDELOAD 78B
 PELTON MISS JAYLA 0508S

HXC CONQUEST 4405P
RAML CHEROKEE MAIDEN 500
 WDZ SRV FASHION 1135



OWNED WITH RAML CATTLE



0200AR20726 | Reg # 2141837 | BD: Jan 6, 2019 | Frame: 6.0 | BW: 80 lbs | WW: 691 lbs | YW: 1288 lbs | Scrotal: 42.0 cm

RAAA-F24	CE	BW	WW	YW
EPD	12	-0.6	73	117
ACC	0.64	0.78	0.71	0.71
RANK %	62	68	30	31

RAAA-F24	MARB	CW	REA	FAT
EPD	0.66	35	0.57	0.00
ACC	0.44	0.52	0.45	0.39
RANK %	17	21	7	23

RAAA-F24	ADG	DMI	MILK	ME
EPD	0.27	0.82	26	7
ACC	0.71	0.37	0.28	-0.12
RANK %	34	58	50	62

RAAA-F24	HPG	CEM	STAY	YG
EPD	12	5	15	-0.07
ACC	0.26	0.39	0.39	0.38
RANK %	52	84	45	9



PGD - PELTON MISS JAYLA 0508S



Progeny - Pugh Farms

Phenotypic standout! Great body design being stout featured and massive yet has a smooth, attractive look with impeccable foot structure and soundness

Will improve the udder quality, foot structure and carcass traits in potential matings

Backed by cow power stemming from his majestic Conquest dam

Checks all the boxes and a must use sire with unlimited mating flexibility

Dayload

RED ANGUS | 37

RED SIX MILE

Mossy Oak

175H

RED U-2 RECKONING 149A
RED SIX MILE JOHN WICK 882E
 RED SIX MILE & CO GLORIA 29A

RED RUST BULL 31B
RED SIX MILE MISS LARK 225E
 RED SIX MILE MISS LARK 300C



OWNED WITH SIX MILE RED ANGUS
 & MOOSE CREEK



0200AR20729 | Reg # 2164370 | BD: Feb 21, 2020 | **Frame:** - | **BW:** 70 lbs | **WW:** 888 lbs | **YW:** 1506 lbs | **Scrotal:** 36.5 cm

RAAA-F24	CE	BW	WW	YW
EPD	15	-2.1	87	139
ACC	0.58	0.82	0.74	0.72
RANK %	26	43	5	6

RAAA-F24	MARB	CW	REA	FAT
EPD	0.36	44	0.34	0.04
ACC	0.29	0.50	0.43	0.30
RANK %	60	9	21	78

RAAA-F24	ADG	DMI	MILK	ME
EPD	0.32	1.27	35	13
ACC	0.72	0.35	0.22	0.14
RANK %	12	89	2	88

RAAA-F24	HPG	CEM	STAY	YG
EPD	15	11	14	0.12
ACC	0.11	0.33	0.21	0.35
RANK %	10	6	55	74



Dam - RED SIX MILE MISS LARK 225E



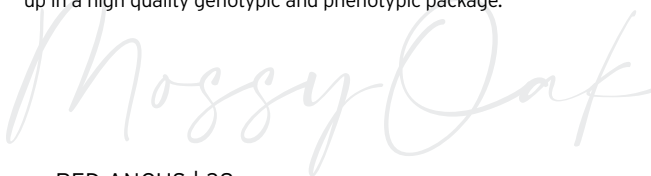
Sire - RED SIX MILE JOHN WICK 882E

Six Mile Ranch feature sire and sale topper who is one of the most unique individuals ever produced in the Six Mile program combining superior phenotype and body design with breed leading calving ease and growth EPDs

Smooth and balanced attention grabber with herd sire character

Dam is an "easy on the eyes" soft made, level uddered member of the famed and productive Six Mile Lark cow family

Calving Ease credentials with herd building heritage all wrapped up in a high quality genotypic and phenotypic package.



RED ANGUS | 38

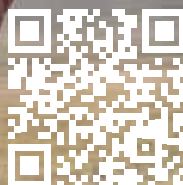
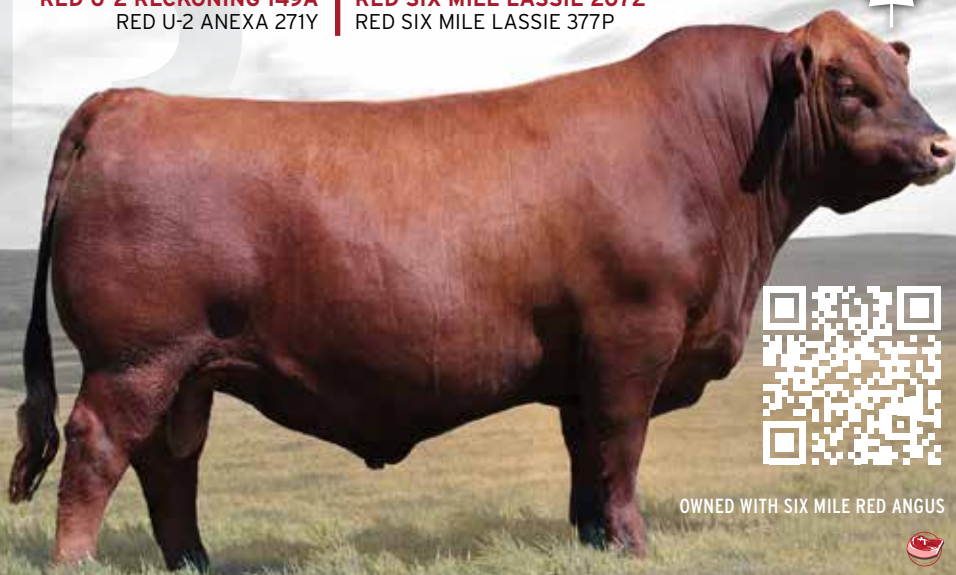
RED SIX MILE

Custom Made

505C

RED U-2 RECON 192Y
RED U-2 RECKONING 149A
 RED U-2 ANEXA 271Y

RED BASIN EXT 45T5
RED SIX MILE LASSIE 207Z
 RED SIX MILE LASSIE 377P



OWNED WITH SIX MILE RED ANGUS



0200AR20722 | Reg # 1858482 | BD: Apr 1, 2015 | Frame: 6.3 | BW: 84 lbs | WW: 893 lbs | YW: 1417 lbs | Scrotal: 39.0 cm

RAAA-F24	CE	BW	WW	YW
EPD	9	0.3	59	84
ACC	0.58	0.86	0.80	0.78
RANK %	89	81	76	87

RAAA-F24	MARB	CW	REA	FAT
EPD	0.47	26	0.28	0.02
ACC	0.42	0.56	0.49	0.33
RANK %	41	44	28	55

RAAA-F24	ADG	DMI	MILK	ME
EPD	0.16	0.42	27	-5
ACC	0.78	0.15	0.67	0.29
RANK %	93	22	38	13

RAAA-F24	HPG	CEM	STAY	YG
EPD	14	7	8	0.03
ACC	0.39	0.58	0.49	0.38
RANK %	17	47	96	36



Dam - RED SIX MILE LASSIE 207Z



Progeny - Rainbow Red Angus

Phenotypically one of the most outstandingly built sires in the Red Angus Breed

An attractive highly maternal sire who will improve udders

Custom Made

EGL *Fury* 8100

LSF TAKEOVER 9943W
LSF SRR TAKEOVER 5051C
 LSF RR SYRINGA U8044 X0331

PIE GET WESTERN 4061
AHL DUCHESS 42W
 AHL DUCHESS 106P



OWNED WITH LAZY MC RED ANGUS
 & EAGLE PASS RANCH



0200AR20724 | Reg # 2091768 | BD: Jan 2, 2018 | **Frame:** 5.7 | **BW:** 82 lbs | **WW:** 713 lbs | **YW:** 1250 lbs | **Scrotal:** 38.0 cm

RAAA-F24	CE	BW	WW	YW
EPD	10	-2.9	64	89
ACC	0.52	0.72	0.67	0.66
RANK %	81	29	58	82

RAAA-F24	MARB	CW	REA	FAT
EPD	0.45	15	0.25	0.03
ACC	0.39	0.46	0.40	0.32
RANK %	44	74	32	69

RAAA-F24	ADG	DMI	MILK	ME
EPD	0.15	0.17	31	-6
ACC	0.66	0.18	0.32	0.19
RANK %	94	8	12	11

RAAA-F24	HPG	CEM	STAY	YG
EPD	11	9	11	0.02
ACC	0.10	0.38	0.29	0.33
RANK %	57	19	83	31



Dam - AHL DUCHESS 42W

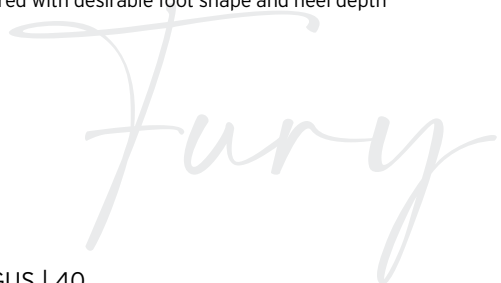


Maternal Sibling

Full bodied individual with explosive muscle shape and body dimension along with a deep and sweeping rib design

Dam is one of the strongest donor dams to be found in the Red Angus breed

Sound structured with desirable foot shape and heel depth



RED ANGUS | 40

W/C Right Now 1198J

HOOK'S BOZEMAN 8B
MR SR 71 RIGHT NOW E1538
 MISS SR C1538

REMINGTON LOCK N LOAD 54U
W/C MISS ANGEL 2870Z
 MISS WERNING KP 8543U



OWNED WITH WHEATLAND CATTLE CO



0200SM30814 | Reg # 1459704 | BD: Feb 7, 2021 | **Frame:** - | **BW:** 78 lbs | **WW:** 786 lbs | **YW:** 1481 lbs | **Scrotal:** 39.0 cm

CSA-F24	CE	BW	WW	YW
EPD	12.8	0.5	85.1	131.8
ACC	0.48	0.51	0.49	0.49
RANK %	10	10	25	15

CSA-F24	CWT	MARB	REA	FAT
EPD	30.2	0.1	1.11	-0.105
ACC	0.44	0.41	0.42	0.37
RANK %	35	10	10	40

CSA-F24	MCE	MWWT	MILK	STAY
EPD	6.6	63.6	21	10.4
ACC	0.31	0.32	0.24	0.39
RANK %	20	60	80	95

CSA-F24	API	TPI
EPD	126.52	84.52
ACC		
RANK %		

Homozygous Black and Homozygous Polled

Purebred in USA, 28/32 in Canada, outcross opportunity for many operations with good genomic data across the board

Sired by MR SR 71 RIGHT NOW E1538 and backed by some of the greatest cows in the breed including MISS WERNING KP 8543U



Dam - W/C MISS ANGEL 2870Z



Progeny at Wheatland Cattle Co.



Progeny at Wheatland Cattle Co.

MCR MR.

Limitless 13H 25LWELSH'S WARSAW 312Z
HART STATE OF WAR 056C
HART MISS 102ASKORS HIGH ROLLER 34C
MCR MS HECTIC 66F 13H
MCR FORTUNE 66F0200SM30737 | Reg # 1457421 | BD: Jan 7, 2023 | **Frame:** - | **BW:** 82 lbs | **WW:** 818 lbs | **YW:** 1337 lbs | **Scrotal:** 38.0 cm

CSA-F24	CE	BW	WW	YW
EPD	17.8	0	80	120
ACC	0.45	0.49	0.47	0.48
RANK %	1	5	40	35

CSA-F24	MCE	MWWT	MILK	STAY
EPD	11.7	66.9	26.9	18.5
ACC	0.27	0.30	0.22	0.35
RANK %	1	40	40	10

CSA-F24	CWT	MARB	REA	FAT
EPD	37.4	-0.02	0.94	-0.057
ACC	0.41	0.36	0.39	0.35
RANK %	15	40	35	100

CSA-F24	API	TPI
EPD	139.58	78.95
ACC		
RANK %		



Sire - HART STATE OF WAR 056C

Polled

The Hart State of War 056C son we've been searching for!!!

Limitless will take these popular genetics to a new level

Limitless

WS *Epic* E152

WS ALL-AROUND Z35
WS ALL ABOARD B80
 WS LITTLE SISTER W37

GW RED COAT 099TS
WS MAJESTIC Z133
 WS MOTHER LODGE W21



OWNED WITH WHEATLAND CATTLE CO.



0200SM30725 | Reg # 1237011 | BD: Jan 9, 2017 | **Frame:** 6.5 | **BW:** 93 lbs | **WW:** 777 lbs | **YW:** 1363 lbs | **Scrotal:** 39.0 cm

CSA-F24	CE	BW	WW	YW
EPD	14	-1.1	95.7	146.5
ACC	0.81	0.91	0.88	0.87
RANK %	5	2	5	3

CSA-F24	MCE	MWWT	MILK	STAY
EPD	6	69.3	21.4	3.5
ACC	0.67	0.74	0.67	0.55
RANK %	30	30	80	100

CSA-F24	CWT	MARB	REA	FAT
EPD	33.7	0.12	1	-0.097
ACC	0.67	0.62	0.63	0.53
RANK %	20	10	20	55

CSA-F24	API	TPI
EPD	121.57	93.02
ACC		
RANK %		



Progeny - Earley Livestock



Progeny - Wheatland Cattle Co.

Homozygous Polled

One of the most popular Red Simmental sires in the breed

First progeny at Wheatland Cattle were born easy with low birthweights and have performed exceptional at weaning

Stout featured with unmatched body of depth and breed leading EPDs from low birthweight to high performance



LLW CARD

True North

G71

HTP/SVF DURACELL T52
GSC GCCO DEW NORTH 102C
 WELSH'S SCARLET 161Z

W/C RELENTLESS 32C
COX'S JOYS PRINCESS 711E
 GCC JOYS ELEGANCE 199Y



OWNED WITH WHEATLAND CATTLE CO. & LUCAS WISNEFSKI



0200SM30344 | Reg # 1361732 | BD: Feb 5, 2019 | Frame: - | BW: 76 lbs | WW: 758 lbs | YW: - | Scrotal: 41.0 cm

CSA-F24	CE	BW	WW	YW
EPD	13.4	0.3	74.3	101.8
ACC	0.69	0.83	0.71	0.69
RANK %	10	10	65	80

CSA-F24	CWT	MARB	REA	FAT
EPD	14.7	-0.07	1.04	-0.069
ACC	0.58	0.56	0.54	0.45
RANK %	90	60	15	95

CSA-F24	MCE	MWWT	MILK	STAY
EPD	4.5	54.9	17.7	8.6
ACC	0.43	0.49	0.38	0.41
RANK %	50	95	95	100

CSA-F24	API	TPI
EPD	107.22	72.4
ACC		
RANK %		



Progeny - Wheatland Cattle Co.



Progeny - Diamond M Cattle Company

Homozygous Polled, Homozygous Black Purebred

Unmistakable look and presence combined with being soft sided, great haired, square hipped and big topped

Exciting outcross sire with impeccable structure being easy going and fluid on the move

Tremendous cow family with dam and grandam having great udders and feet to go with their many championship titles

True North

SIMMENTAL | 44

ERIXON

Asset 91J

KWA LAW MAKER 59C
DOUBLE BAR D LIBERATOR 412E
 DOUBLE BAR D GALAXY 101X

KUNTZ SHERIFF 8A
ERIXON LADY 15D
 ERIXON LADY 75B



OWNED WITH MCINTOSH LIVESTOCK



0200SM30730 | Reg # 1348367 | BD: Jan 17, 2021 | **Frame:** - | **BW:** 89 lbs | **WW:** 733 lbs | **YW:** 1411 lbs | **Scrotal:** 38.5 cm

CSA-F24	CE	BW	WW	YW
EPD	7.6	3.2	81.3	135
ACC	0.56	0.67	0.58	0.57
RANK %	55	45	35	10

CSA-F24	MCE	MWWT	MILK	STAY
EPD	3.5	66.8	26.1	16.2
ACC	0.26	0.33	0.20	0.32
RANK %	65	40	45	30

CSA-F24	CWT	MARB	REA	FAT
EPD	40.7	-0.05	0.97	-0.085
ACC	0.44	0.30	0.37	0.28
RANK %	10	50	30	80

CSA-F24	API	TPI
EPD	117.48	74.73
ACC		
RANK %		



Progeny - McIntosh Livestock



MGD - ERIXON LADY 75B

Homozygous Polled sire with a commanding presence who should be on the must use list

Balanced multi trait excellence in an eye appealing package with impressive body dimension, capacity and soundness

Checks all the boxes from calving ease and low birthweight to yearling, docility, marbling, ribeye, API and TPI

Asset

SIMMENTAL | 45

WHEATLAND

Affinity

8196F

WS PILGRIM H182U
CCLT ALLIANCE 91C
 BROOKS SHINIA 1A

GOLDEN OPPORTUNITYHR R851
WHEATLAND LADY 913W
 WHEATLAND LADY 751 T



OWNED WITH BONCHUK FARMS



0200SM30727 | Reg # 1252370 | BD: Apr 16, 2018 | Frame: 6.4 | BW: 84 lbs | WW: 869 lbs | YW: 1543 lbs | Scrotal: 40.0 cm

CSA-F24	CE	BW	WW	YW
EPD	13	0.8	62.8	78.3
ACC	0.67	0.80	0.73	0.71
RANK %	10	10	100	100

CSA-F24	MCE	MWWT	MILK	STAY
EPD	7.1	47.3	15.9	10.2
ACC	0.43	0.49	0.37	0.41
RANK %	15	100	100	100

CSA-F24	CWT	MARB	REA	FAT
EPD	12	0.12	0.65	-0.1
ACC	0.52	0.48	0.47	0.40
RANK %	95	10	95	45

CSA-F24	API	TPI
EPD	113.49	68.86
ACC		
RANK %		



Progeny - Wheatland Cattle Co.



Progeny - Indian River Cattle Co.

One of the most sought after red sons of the popular black sire CCLT Alliance

Exceptional body build with an attractive look

Dam has impeccable udder quality and maternal ability

Homozygous Polled

Affinity

SIMMENTAL | 46

CKCC LD

Dimension 8965

MR NLC UPGRADE U8676
MR TR HAMMER 308A ET
 SVF/HS EXPECTING A DREAM

GKS RE-HAB
WF FOREVER LADY Z165
 WF U165



OWNED WITH WHEATLAND CATTLE CO.



0200SM30726 | Reg # 1304903 | BD: Mar 27, 2018 | **Frame:** - | **BW:** 85 lbs | **WW:** 726 lbs | **YW:** 1259 lbs | **Scrotal:** 40.0 cm

CSA-F24	CE	BW	WW	YW
EPD	6	4.5	101.7	155.8
ACC	0.60	0.74	0.69	0.66
RANK %	75	70	2	1

CSA-F24	MCE	MWWT	MILK	STAY
EPD	1.2	60.8	9.9	9
ACC	0.36	0.42	0.28	0.41
RANK %	90	75	100	100

CSA-F24	CWT	MARB	REA	FAT
EPD	42.9	-0.12	1.08	-0.094
ACC	0.54	0.47	0.49	0.41
RANK %	4	75	10	60

CSA-F24	API	TPI
EPD	101.47	81.47
ACC		
RANK %		



Progeny - Wheatland Cattle Co.



Progeny - Wheatland Cattle Co.

Homozygous Black, Homozygous Polled

Outstanding phenotype sire out of one of the top donor cows in the USA

Sound structured and soft sided with an appealing look and a great foot

First sons were featured and sought after in the 2022 Bull sale season with high sellers in the Wheatland Cattle Co and McIntosh Livestock bull sales

Dimension

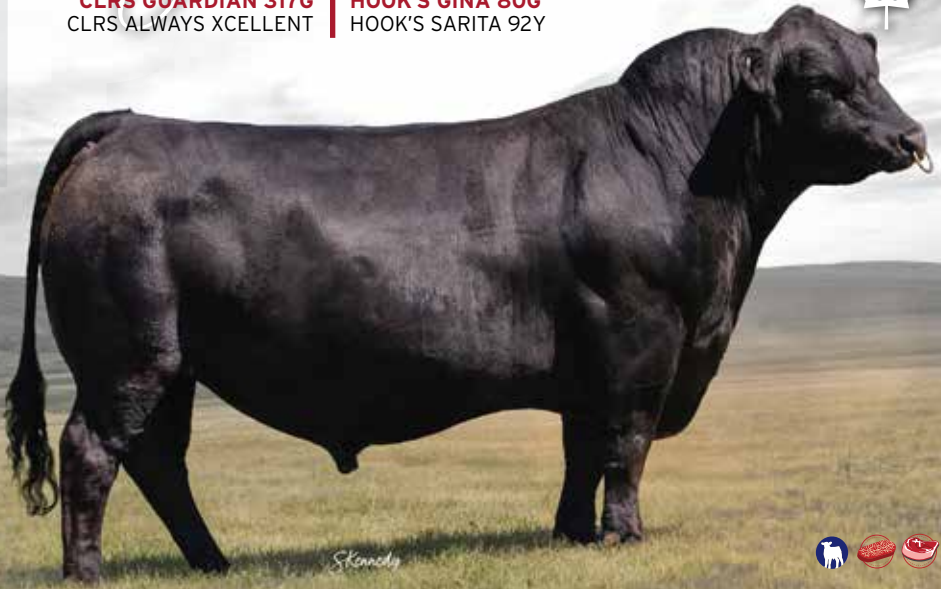
SIMMENTAL | 47

HOOK'S

Java 1J

HOOK'S BEACON 56B
CLRS GUARDIAN 317G
 CLRS ALWAYS XCELLENT

HOOK'S EAGLE 6E
HOOK'S GINA 80G
 HOOK'S SARITA 92Y



0200SM30355 | Reg # 1465852 | BD: Feb 8, 2021 | **Frame:** - | **BW:** 56 lbs | **WW:** 699 lbs | **YW:** 1171 lbs | **Scrotal:** -

CSA-F24	CE	BW	WW	YW
EPD	14.8	-1.9	92.7	144.9
ACC	PE	PE	PE	PE
RANK %	4	1	10	4

CSA-F24	CWT	MARB	REA	FAT
EPD	48.2	0.52	1.2	-0.042
ACC	PE	PE	PE	PE
RANK %	1	1	2	100

CSA-F24	MCE	MWWT	MILK	STAY
EPD	6.4	66.6	20.3	20.9
ACC	PE	PE	PE	PE
RANK %	25	40	85	1

CSA-F24	API	TPI
EPD		
ACC		
RANK %		

Unmatched in rankings as he is in the top 1% of the breed for BW, stayability, carcass weight & marbling

High WW and YW performance without compromising calving ease

Polled, Homozygous Black

Java

EGL

Growler 08G

HOOKS SHEAR FORCE 38K
HOOK'S BEACON 56B
 HOOKS ZAFIRAH 41Z

MCC DAYBREAK
EAGLE PASS DAYBREAK 0022 ET
 EGL MISS NEW DESIGN 1171



0200SM30346 | Reg # 3655891 | BD: Jan 25, 2019 | **Frame:** - | **BW:** 82 lbs | **WW:** 648 lbs | **YW:** 1330 lbs | **Scrotal:** -

ASA-F24	CE	BW	WW	YW
EPD	18.1	-2.2	69.6	111.9
ACC	0.46	0.48	0.50	0.51
RANK %	10	20	75	65

ASA-F24	MCE	MWWT	MILK	STAY
EPD	11.4	60.1	25.7	13.2
ACC	0.31	0.33	0.26	0.39
RANK %	4	60	35	70

ASA-F24	CWT	MARB	REA	FAT
EPD	52.6	0.96	1.32	0.022
ACC	0.46	0.45	0.44	0.42
RANK %	10	2	1	99

ASA-F24	API	TPI
EPD	171.7	95.1
ACC		
RANK %		

Homozygous Polled, Homozygous Black, 50% Simmental, 50% Angus

Top level calving ease with leading growth, carcass and grow safe feed efficiency data

Top 10% Calving Ease ranking combined with a tremendous top 1% ranking for Ribeye and 2% for Marbling

Exceptional carcass ultrasound data indexing 110 for Marbling and 126 for REA with an actual Ribeye of 17.2"

Growler

BILJ POL

Jamie 31J

VIRGINIA MAXIMUS
ANCHOR D RAPTOR 392C
 ANCHOR D ZILEY 392Z

SIBELLE SPARTACUS 8A
SIBELLE ABEL 31F
 SIBELLE ARIELLE 2C



0200SM30353 | Reg # 1390695 | BD: Dec 3, 2021 | Frame: 5.8 | BW: 83 lbs | WW: 960 lbs | YW: 1448 lbs | Scrotal: 39.5 cm

CSA-F24	CE	BW	WW	YW
EPD	14.2	3.2	89.1	132.7
ACC	0.46	0.52	0.48	0.48
RANK %	5	45	15	15

CSA-F24	MCE	MWWT	MILK	STAY
EPD	8.6	81.2	36.6	18.9
ACC	0.25	0.29	0.20	0.31
RANK %	5	1	5	10

CSA-F24	CWT	MARB	REA	FAT
EPD	39.1	-0.17	0.87	-0.129
ACC	0.39	0.33	0.36	0.30
RANK %	10	90	55	10

CSA-F24	API	TPI
EPD	125.61	77.96
ACC		
RANK %		



Dam - SIBELLE ABEL 31F

Our search for the next breed impacting Polled Fleckvieh sire led us to BILJ Pol Jamie

Easy fleshing and sound made with tremendous thickness and performance all wrapped up in a Calving Ease package

From a highly productive dam with perfect udder quality

Jamie

ULTRA *Independence* 26J

STARWEST POL BLUEPRINT
SUNNY VALLEY FREEDOM 22F
 SUNNY VALLEY TRINITY 53Z

ANCHOR D RAPTOR 392C
WJS ERIKA 748E
 PHS YOUR CHOICE



0200SM30810 | Reg # PT1354128 | BD: Jan 7, 2021 | Frame: - | BW: 88 lbs | WW: 753 lbs | YW: - | Scrotal: -

CSA-F24	CE	BW	WW	YW
EPD	7.5	4.2	96.8	141.4
ACC	0.39	0.46	0.47	0.47
RANK %	55	65	4	5

CSA-F24	MCE	MWWT	MILK	STAY
EPD	5.7	87.4	39	12.1
ACC	0.21	0.27	0.17	0.31
RANK %	35	1	2	85

CSA-F24	CWT	MARB	REA	FAT
EPD	38.4	0.18	0.8	-0.137
ACC	0.36	0.33	0.35	0.31
RANK %	10	5	70	3

CSA-F24	API	TPI
EPD	123.42	89.19
ACC		
RANK %		



Dam - WJS ERIKA 748E



Sire - SUNNY VALLEY FREEDOM 22F

Homozygous Polled Fullblood Fleckvieh

Independence is a sure-footed, dark pigmented solid all-around sire that we have been waiting for!

Progeny will take off and grow, with top rankings for WW and YW, while proving great returns on the rail with top 10% or better CWT, MARB & FAT

Independence

BAR 5

Hexlor 1223C

CONGOSIM HEXVAS
BAR 5 FF HEXAGON 412Y
 RAAP N SKRAAP MARDA

DORA LEE ECLIPSE FF9R
DORA LEE'S DANIELLA FF8W
 DORA LEE DARBY FF8N



0200SM30336 | Reg # 1155074 | BD: March 16, 2015 | **Frame:** 6.1 | **BW:** 89 lbs | **WW:** 713 lbs | **YW:** - | **Scrotal:** 40.0 cm

CSA-F24	CE	BW	WW	YW
EPD	2.5	4.9	80.6	108.3
ACC	0.55	0.69	0.59	0.58
RANK %	95	75	40	65

CSA-F24	MCE	MWWT	MILK	STAY
EPD	0	78.3	38	11.4
ACC	0.33	0.38	0.28	0.28
RANK %	95	3	3	90

CSA-F24	CWT	MARB	REA	FAT
EPD	25.1	0.12	0.74	-0.133
ACC	0.47	0.44	0.43	0.34
RANK %	55	10	85	5

CSA-F24	API	TPI
EPD	102.6	75.28
ACC		
RANK %		



Progeny



Maternal Sibling

Polled Fleck Fullblood

Sired by Hexagon who is an outcross bull highly noted for his outstanding profile and colour

Highly Maternal with a top 3% ranking for MWWT and Milk

Hexlor

FSMB POL

Eddy 3E

SIBELLE DIRTY HARRY 25Z
FGAF FRENCH ATTACK 010C
 VIRGINIAS JANE WEST

CHAMPS BRAVO
FSMB MISS BRAVO 8A
 FSMB MISS FRANCESCA 14W



0200SM30341 | Reg # 1226358 | BD: Jan 4, 2017 | Frame: 5.8 | BW: 94 lbs | WW: 1050 lbs | YW: - | Scrotal: 38.0 cm

CSA-F24	CE	BW	WW	YW
EPD	3.5	6.2	81.9	104.8
ACC	0.59	0.74	0.65	0.64
RANK %	90	95	35	70

CSA-F24	MCE	MWWT	MILK	STAY
EPD	0.3	67.2	26.2	15.1
ACC	0.35	0.44	0.33	0.36
RANK %	95	40	45	45

CSA-F24	CWT	MARB	REA	FAT
EPD	14.5	0	1.01	-0.156
ACC	0.52	0.46	0.48	0.37
RANK %	95	30	20	1

CSA-F24	API	TPI
EPD	103.22	71.24
ACC		
RANK %		



Sire - FGAF FRENCH ATTACK 010C



MGS - CHAMPS BRAVO

Eddy balances the power and performance from his Dirty Harry sire line with the maternal and calving prowess of Bravo on his dam side

He is well pigmented, well muscled and carries dark black hooves

Balances EPDs to go with strong phenotype of high growth and strong maternal

Eddy

GRINALTA'S HP

Sensation

FF909D

MACKENZIE'S CANE 122Y
BIG HILLS CANE 62B
 EAGLE-RIDGE ZABIA

GRINALTA'S HP KING 126S
GRINALTA'S FRITA-PPFF109W
 GRINALTA'S BERTA PFF109T



0200SM30728 | Reg # P1242762 | BD: Apr 17, 2016 | **Frame:** 6.4 | **BW:** 68 lbs | **WW:** 830 lbs | **YW:** 1466 | **Scrotal:** 45.5 cm

CSA-F24	CE	BW	WW	YW
EPD	3.9	5.4	77.7	113.3
ACC	0.58	0.77	0.66	0.65
RANK %	90	85	50	50

CSA-F24	MCE	MWWT	MILK	STAY
EPD	-1.7	66.5	27.6	6.7
ACC	0.33	0.38	0.24	0.35
RANK %	100	45	35	100

CSA-F24	CWT	MARB	REA	FAT
EPD	22.4	0.02	1.05	-0.125
ACC	0.43	0.46	0.45	0.34
RANK %	65	25	15	15

CSA-F24	API	TPI
EPD	90.24	71.01
ACC		
RANK %		



Progeny



Maternal Sibling

Homozygous Polled Full Fleckvieh

Sensation offers a fresh yet time tested pedigree to our Full Fleckvieh Simmental lineup

Solid built sire possessing great depth of body with tremendous muscle expression combined with soundness of movement and a well shaped foot

Sensation

LRX HP

Rocket 23YGRINALTA'S GRIDIRON 403J
DFM MARCUS 14M
DFM KATHLEEN 41KG-SEVEN POL ROCKET 12P
LRX MS ROCKET 3W
LRX MARCY 40T0200SM30326 | Reg # 747235 | BD: Jan 7, 2011 | **Frame:** 6.7 | **BW:** 85 lbs | **WW:** 879 lbs | **YW:** 1506 lbs | **Scrotal:** 36.0 cm

CSA-F24	CE	BW	WW	YW
EPD	2.9	5.4	80.8	108.1
ACC	0.70	0.84	0.77	0.75
RANK %	95	85	40	65

CSA-F24	MCE	MWWT	MILK	STAY
EPD	-2.2	67.7	27.3	8.8
ACC	0.52	0.66	0.60	0.46
RANK %	100	35	40	100

CSA-F24	CWT	MARB	REA	FAT
EPD	17.7	-0.21	1.07	-0.132
ACC	0.61	0.53	0.57	0.45
RANK %	85	100	10	10

CSA-F24	API	TPI
EPD	79.74	66.23
ACC		
RANK %		



Progeny at Robb Farms



Progeny at Robb Farms

Homozygous Polled Full Fleckvieh

Has stood the test of time and still favoured as one of the top Homozygous Polled calving ease fullblood sires with high quality progeny

Pedigree contains Iroc Rocket

Rocket

FLECKVIEH | 55

SPARROWS

Wheaton 101J



LT RIO BRAVO 3181 P
LT RUSHMORE 8060 PLD
 LT BRENDA'S EASE 3055PLD

WINN MANS SKAGGS 663X
SPARROWS SPLENDOR 135G
 SPARROWS SPLENDOR 135A



0200CH50719 | Reg # MC822805 | BD: Jan 8, 2021 | **Frame:** - | **BW:** 83 lbs | **WW:** 815 lbs | **YW:** 1421 lbs | **Scrotal:** 44 cm | PAF

CCA-F24	CE	BW	WW	YW	MILK
EPD	13.8	-3	58	115	30
ACC	0.49	0.66	0.38	0.32	0.25
RANK %	5	10	60	40	10

CCA-F24	CWT	MARB	REA	FAT
EPD	22	0.03	0.56	0.027
ACC	0.17	0.14	0.17	0.14
RANK %	60	65	90	95



Sire - LT RUSHMORE 8060 PLD



MGS - WINN MANS SKAGGS 663X

The Total Package! Wheaton is a standout in terms of body volume and internal dimension with strong performance, softness and moderation

Featured Lot 1 bull from the 2022 CK Sparrow Farms sale

Dam is a great uddered, good haired, strong footed Winn Mans Skaggs daughter

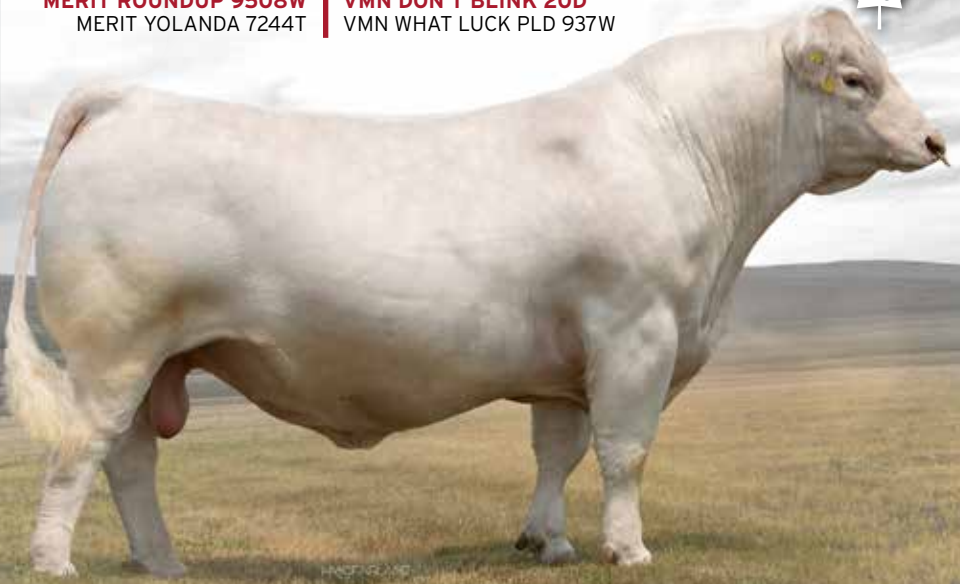
Wheaton

KS

Level Up 13H

MXS VERMILLION 527R
MERIT ROUNDUP 9508W
 MERIT YOLANDA 7244T

HC YACHTZEE 166Y
VMN DON'T BLINK 20D
 VMN WHAT LUCK PLD 937W



0200CH50321 | Reg # MC798949 | BD: Jan 23, 2020 | **Frame:** 6.5 | **BW:** 90 lbs | **WW:** 972 lbs | **YW:** 1592 lbs | **Scrotal:** 39.0 cm | PAF

CCA-F24	CE	BW	WW	YW	MILK
EPD	0.9	0.1	51	106	20
ACC	0.33	0.51	0.33	0.20	0.21
RANK %	80	45	85	60	70

CCA-F24	CWT	MARB	REA	FAT
EPD	17	0.09	0.51	-0.011
ACC	0.12	0.10	0.11	0.10
RANK %	80	35	95	15



Dam - VMN DON'T BLINK 20D



Maternal Sibling

Homozygous Polled (PP) and PA free

Level Up offers moderate BW in a heavily muscled, deep-bodied and structurally-sound package backed by a highly maternal productive dam with great udder quality

Top level actual performance data combined with high genetic predictions for carcass quality

Level Up

AVAILABLE FEMALE & MALE SORTED

CHAROLAIS | 57

VIERRA

Abundance 90678

BHD PERSEUS B65 P
DC/CRJ TANK E108 P
 CRJ MS ZYLEN C1587

M6 NEW STANDARD 842 P ET
M6 MS NEW GERMAINE 484 P
 M6 COOL GERMAINE 1145 P ET



0200CH50325 | Reg # 867428 | BD: March 4, 2022 | Frame: - | BW: 100 lbs | WW: - | YW: - | Scrotal: - | PAF

CCA-F24	CE	BW	WW	YW	MILK
EPD	17.6	-2.9	69	140	35
ACC	0.27	0.36	0.29	0.28	0.24
RANK %	1	10	20	4	2

CCA-F24	CWT	MARB	REA	FAT
EPD	41	0.12	0.77	0.005
ACC	0.19	0.17	0.19	0.17
RANK %	2	20	40	50



Dam - M6 MS NEW GERMAINE 484 P



Sire - DC/CRJ TANK E108 P

Homozygous Polled and PA free

Tremendous blend of genotypic excellence with a rock solid appealing phenotype

Top of the breed for calving ease with leading performance figures and TSI

His dam, M6 Ms New Germaine 484, is one of the leading performance and carcass donors in the Charolais breed



CHAROLAIS | 58

VIERRA

Substantial

90673

BHD PERSEUS B65 P
DC/CRJ TANK E108 P
 CRJ MS ZYLEN C1587

M6 NEW STANDARD 842 P ET
M6 MS NEW GERMAINE 484 P
 M6 COOL GERMAINE 1145 P ET



0200CH50325 | Reg # 875243 | BD: March 4, 2022 | Frame: - | BW: 83 lbs | WW: 685 lbs | YW: 1190 lbs | Scrotal: - | PAF

CCA-F24	CE	BW	WW	YW	MILK
EPD	19.6	-4.2	65	141	42
ACC	0.27	0.36	0.29	0.28	0.24
RANK %	1	4	30	3	1

CCA-F24	CWT	MARB	REA	FAT
EPD	40	0.28	0.99	0.004
ACC	0.19	0.18	0.19	0.18
RANK %	2	1	4	50



Dam - M6 MS NEW GERMAINE 484 P



Sire - DC/CRJ TANK E108 P

Heterozygous Polled and PA free

Incredible curve bending EPD spread from top 1% Calving Ease and 3% yearling weight

Carcass improver with breed leading Carcass Weight, Ribeye, Marbling and Milk

Improves profitability in all economic traits

Substantial

CHAROLAIS | 59

CCC Tried and True 8507

LT RIO BRAVO 3181
LT RUSHMORE 8060
 LT BRENDA'S EASE 3055

LT BLUE VALUE 7903
WC CCC SWEETHEART 6644
 WC CCC SWEETHEART 1140



0200CH50717 | Reg # MC801637 | BD: Sept 2, 2018 | Frame: - | BW: 70 lbs | WW: 863 lbs | YW: - | Scrotal: 42.0 cm | PAF

CCA-F24	CE	BW	WW	YW	MILK
EPD	16.1	-1.7	67	111	40
ACC	0.57	0.70	0.58	0.41	0.28
RANK %	2	20	20	50	1

CCA-F24	CWT	MARB	REA	FAT
EPD	27	0.09	0.84	0.041
ACC	0.22	0.17	0.21	0.17
RANK %	35	30	20	100

- Proven top level genetics with performance and Calving
- Ease Proven top level calving ease genetics with performance
- Stout made sire with high capacity body mass all set on a sound and solid foot structure
- Dam is a powerful Blue Value daughter displaying incredible consistency in her production who has moved into the Cody Cattle Co. donor program



Dam - WC CCC SWEETHEART 6644



Progeny at High Bluff Stock Farm



Progeny at Whiskey Lane Livestock

DALMAS

Casino 375CPFMC7880 UNO SC
PFMC8960 EXOTIC SC
7121434650 VARSOVIEFMC8152 MBZF CHIEF 14S
FFC14301 WR ULTRA 136U
FFC11815 WR HOPE 4H0200CH50315 | Reg # MC711328 | BD: Aug 12, 2015 | **Frame: 6.4** | **BW: 95 lbs** | **WW: 639 lbs** | **YW: 1045 lbs** | **Scrotal: 40.0 cm**

CCA-F24	CE	BW	WW	YW	MILK
EPD	-6	3.1	46	96	6
ACC	0.28	0.48	0.24	0.14	0.12
RANK %	100	90	95	85	100

CCA-F24	CWT	MARB	REA	FAT
EPD	13	-0.03	0.78	-0.033
ACC	0.08	0.05	0.08	0.06
RANK %	95	95	35	1



Progeny - EMB ESPERANCE 50M owned by Daines Cattle & O'Neill Livestock



Sire - PFMC8960 EXOTIC SC

Polled

Unique full French pedigree that can provide Charolais breeders a new pedigree with a very smooth complete look

Will add muscle shape and thickness while maintaining an attractive shoulder and bone structure

Casino

CHAROLAIS | 61

KAYR

Griffin 753J

RBM FARGO Y111
CEDARLEA TAPADERO 17G
 CEDARLEA UZA 44Y

WCR COMMISSIONER 593 P
KAYR MISS 753E
 KAYR MISS 804U



0200CH50718 | Reg # MC822858 | BD: Jan 24, 2021 | Frame: - | BW: 85 lbs | WW: 780 lbs | YW: 1340 lbs | Scrotal: 38.0 cm | PAF

CCA-F24	CE	BW	WW	YW	MILK
EPD	16.5	-1.4	44	103	17
ACC	0.43	0.57	0.30	0.19	0.16
RANK %	2	25	100	70	85

CCA-F24	CWT	MARB	REA	FAT
EPD	15	0.07	0.5	0.007
ACC	0.11	0.08	0.11	0.09
RANK %	90	45	100	55



Sire - CEDARLEA TAPADERO 17G



MGS - WCR COMMISSIONER 593 P

Attractive and smooth made with proven Calving Ease lineage
 If you're in search of a heifer bull that won't sacrifice growth at weaning then Griffin is the sire for you!
 Sound structured and easy moving with desirable foot shape

Griffin

CHAROLAIS | 62

SCR Triumph 2135



FC MARBLER 841 P
SCR TUFFY 0119
 SCR MISS KING MICKY 7055

JCH MR BULL DOZER P146
SCR MS BABY DOLL 7140
 SCR MISS ROYALTY 9302



0200CH50318 | Reg # MC355788 | BD: Feb 22, 2012 | **Frame: 7** | **BW: 100 lbs** | **WW: 647 lbs** | **YW: 1422 lbs** | **Scrotal: 46.0 cm**

CCA-F24	CE	BW	WW	YW	MILK
EPD	2.1	1.9	83	159	16
ACC	0.61	0.88	0.79	0.75	0.63
RANK %	70	75	1	1	90

CCA-F24	CWT	MARB	REA	FAT
EPD	42	-0.02	0.98	0.011
ACC	0.26	0.21	0.25	0.22
RANK %	1	90	5	70



Progeny



Progeny

Homozygous Polled (PP)

One of the most impressive Charolais sires one will come across. His overall body capacity and muscle mass is extremely impressive along with impeccable structure and foot quality on this must use sire

Excellent performance figures being top 1% WW, YW and CW

Covers all facets of the industry with his Calving Ease and breed leading performance coupled with high marbling and good docility while his daughters in production display excellent udder quality

Triumph

CCR 9139

Candid 3117SHF DAYBREAK Y02 D287 ET
PYRAMID CANDOR 9139
FHF 38Y RITA 197CNJW 160B 028X HISTORIC 81E ET
CRR 81E DONNA 906
CRR 109 HONEY 741

0200HP40321 | Reg # 44507162 | BD: Feb 23, 2023 | Frame: - | BW: 89 lbs | WW: 721 lbs | YW: 1262 lbs | Scrotal: 36.0 cm

AHA-F24	CE	BW	WW	YW	SC
EPD	5.8	2	66	116	0.8
ACC	0.29	0.49	0.43	0.44	0.41
RANK %	28	33	12	4	16

AHA-F24	MILK	TM	MCE	SCF	COW W	UDDER	TEAT
EPD	39	72	1.0	21.1	80	1.3	1.4
ACC	0.24		0.30	0.28	0.30	0.39	0.39
RANK %	2	3	57		99		

AHA-F24	MARB	REA	FAT	SCHB
EPD	0.13	0.75	0.043	132
ACC	0.26	0.24	0.28	
RANK %	45	8	77	



Sire - PYRAMID CANDOR 9139

Candid has the markings, pigment, design, and genomic values to be a big-time sire

An industry savvy, moderate, masculine bull who is flawless from the ground up

Great bulls come from great mothers and his dam fits that bill. She is a rising star in the CRR cowherd!

Candid

BAR JZ

Buccaneer 210E

CHURCHILL RED BULL 200Z
FRENZEN BAR JZ BRUISER B30
 FRENZEN LADY S38

LCG MASTER ONE WAY 51U
BAR JZ FERN 531Y
 BAR JZ CLASS ACT 538T



OWNED WITH BAR JZ POLLED HEREFORDS



0200HP40712 | Reg # C03045178 | BD: Mar 11, 2017 | **Frame:** 6.0 | **BW:** 82 lbs | **WW:** 706 lbs | **YW:** 1245 lbs | **Scrotal:** 37.0 cm

CHA-F24	CE	BW	WW	YW	SC
EPD	12	-1.4	56.4	77.2	1.8
ACC	0.48	0.79	0.69	0.70	0.60
RANK %	1	3	51	82	2

CHA-F24	MILK	TM	MCE	SCF	COW W	UDDER	TEAT
EPD	35.1	63.3	12	23.4	48	1.5	1.6
ACC	0.41	-	0.44	0.38	0.50	0.65	0.66
RANK %	8	16	1	1	100		

CHA-F24	MARB	REA	FAT	SCHB
EPD	0.06	0.69	0.062	
ACC	0.29	0.24	0.34	
RANK %	68	10	92	



Dam - BAR JZ FERN 531Y



Sire - FRENZEN BAR JZ BRUISER B30

Homozygous Polled

His smooth angular shoulder coupled with ranking atop the breed for CE and low BW make Buccaneer an ideal candidate for breeding heifers

Very sound and fluid in his movements

Outcross pedigree on his maternal side

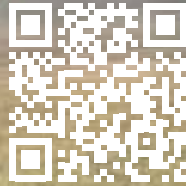
Buccaneer

TH 529B 145Y

Explorer 44D

HUTH PROSPECTOR K085
FTF PROSPECTOR 145Y
 FTF CHICK A BOOM 7227T

TH 22R 16S LAMBEAU 17Y
TH 60W 11X MS DOM 529B ET
 TH 77S 45P RUBY 60W



OWNED WITH TOPP HEREFORDS



0200HP40809 | Reg # C03038429 | BD: Jan 12, 2016 | Frame: 5.7 | BW: 71 lbs | WW: 788 lbs | YW: 1232 lbs | Scrotal: 36.2 cm

CHA-F24	CE	BW	WW	YW	SC
EPD	6.1	-0.9	50	86.7	1.2
ACC	0.47	0.75	0.62	0.60	0.49
RANK %	22	4	76	62	27

CHA-F24	MILK	TM	MCE	SCF	COW W	UDDER	TEAT
EPD	28.4	53.4	4.9	17.5	62.2	1.3	1.3
ACC	0.39	-	0.40	0.40	0.37	0.56	0.57
RANK %	44	61	9	21	98		

CHA-F24	MARB	REA	FAT	SCHB
EPD	0.41	0.28	0.062	
ACC	0.27	0.25	0.30	
RANK %	4	82	92	

Homozygous Polled

Proven high calving ease, low birthweight sire in a well pigmented moderate framed, easy fleshing package



Progeny - Topp Herefords



Progeny - Topp Herefords



Dam - TH 60W 11X MS DOM 529B ET

MURIDALE

Phantom 10F

BONNYVIEW HERO 7Z
MURIDALE IRON MAN 4X
 MURIDALE MOLINARI 8P

SASKVALLEY BONANZA 219M
MURIDALE GOOSE 76Y
 MURIDALE SWAN 54N



0200SP00302 | Reg # M481278 | BD: Mar 20, 2018 | **Frame:** - | **BW:** 90 lbs | **WW:** 714 lbs | **YW:** 1106 lbs | **Scrotal:** -

CSA-F24	CED	BW	WW	YW	MK
EPD	12	-0.70	50	72	25
ACC	0.57	0.75	0.67	0.65	0.20
RANK %	25	20	30	30	25



Dam - MURIDALE GOOSE 76Y



Maternal Sibling

Polled 100% Shorthorn

Top level Calving Ease, Marbling and stayability from a pedigree highly regarded for maternal function

Deep sided, easy fleshing sire with excellent foot shape and desirable skull structure

Selected to follow up the globally successful Semex sire Saskvalley Yesterday

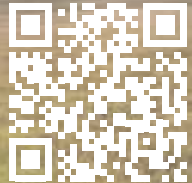
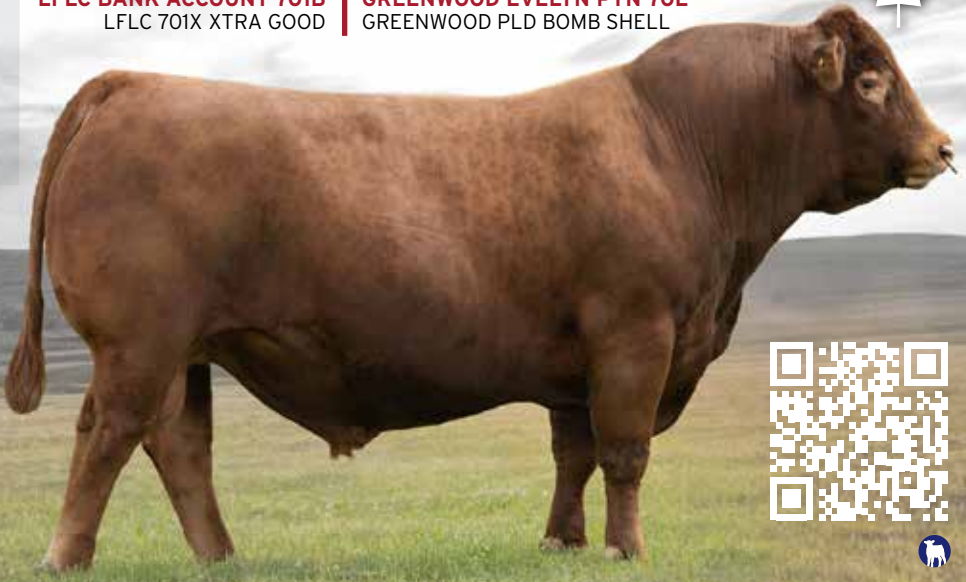
Phantom

BLCC

Grass Roots 70G

WULFS ZIPLOCK N922A
LFLC BANK ACCOUNT 701B
 LFLC 701X XTRA GOOD

GREENWOOD CANADIAN IMPACT ET
GREENWOOD EVELYN PYN 70E
 GREENWOOD PLD BOMB SHELL



0200LM60313 | Reg # CPM4098289 | BD: Feb 3, 2019 | **Frame: -** | **BW: 78 lbs** | **WW: 827 lbs** | **YW: 1368 lbs** | **Scrotal: 35.0 cm**

NALF-F24	GEST	CED	BW	WW	YW	SC	DOC
EPD	-6	16	-1.1	49	66	-0.1	13
ACC	0.53	0.58	0.69	0.58	0.58	0.20	0.53
RANK %	3	10	15	85	90	85	45

NALF-F24	MILK	CEM	STAY
EPD	28	8	8
ACC	0.22	0.30	0.36
RANK %	25	20	70

NALF-F24	CW	MARB	REA	FAT	YG
EPD	21	-0.21	0.87	-0.09	-0.45
ACC	0.47	0.48	0.44	0.37	0.37
RANK %	45	85	80	30	65

The perfect blend of herd improving data with industry leading phenotype

Dam and granddam are exceptional females with strong maternal traits from the famed Greenwood Limousin program

Homozygous Polled



MGD - GREENWOOD PLD BOMB SHELL



Progeny - After Hours Limousin



Progeny - AHL GW LIVING THE DREAM
 2024 NATIONAL CHAMPION

WULFS Formation 5628F

0200LM60312 | Reg # LFM2151633 | BD: Aug 26, 2018 | Frame: - | BW: 85 lbs | WW: 613 lbs | YW: 1244 lbs | Scrotal: 36.5 cm



Homozygous Polled,
Homozygous Black

Outstanding phenotype Wulf LimFlex sire being smooth made, yet stout and muscular

Top ranking Calving Ease with solid performance and exceptional Ribeye

Top 30% Calving Ease and top rankings for Yield Grade, Ribeye and Fat

NALF-F24	GEST	CED	BW	WW	YW	SC	DOC
EPD	-1	12	0.6	68	113	1.1	12
ACC	0.26	0.47	0.51	0.47	0.49	0.27	0.42
RANK %	>95	30	40	50	45	30	60

NALF-F24	MILK	CEM	STAY
EPD	24	5	15
ACC	0.26	0.28	0.36
RANK %	55	70	15

NALF-F24	CW	MARB	REA	FAT	YG
EPD	39	0.13	0.81	-0.04	-0.24
ACC	0.45	0.43	0.42	0.39	0.36
RANK %	40	80	30	20	25

SYDGEN C C & 7
HOOVER DAM
ERICA OF ELLISTON C124

WULFS ZAMBONI N903Z
WULFS CUPIDS ARROW 5628C
JBAK PAGODA 696P

WULFS Halibut 5566H

0200LM60315 | Reg # LFM2275589 | BD: Feb 16, 2020 | Frame: 6.3 | BW: 92 lbs | WW: 763 lbs | YW: 1290 lbs | Scrotal: 36.5 cm



Homozygous Polled,
Homozygous Black

Halibut has the look and data to back him up being in the top 4% for STAY, 10% for FAT, and 3% for REA and YG for the Limousin breed

NALF-F24	GEST	CED	BW	WW	YW	SC	DOC
EPD	-3	11	-0.1	57	89	1	12
ACC	0.17	0.50	0.50	0.51	0.49	0.27	0.48
RANK %	55	40	25	90	90	35	65

NALF-F24	MILK	CEM	STAY
EPD	22	6	17
ACC	0.26	0.32	0.37
RANK %	80	55	4

NALF-F24	CW	MARB	REA	FAT	YG
EPD	25	0.3	1.18	-0.05	-0.44
ACC	0.45	0.47	0.43	0.44	0.37
RANK %	85	45	3	10	3

JCL LODESTAR 27L
RUNL STETSON 850S
RUNL 72L

KCF BENNETT ABSOLUTE
WULFS PERSEPHONE 5566C
ROYAL PERSEPHONE DRCC 0087 X

KFC

Judgement Call 301J



RIVER HILL 26T WALKER 60W
RIVER HILL 60W EXCALIBUR 345E
PRARIE HILL DREAMER 88K

SPOTS N' SPROUTS ZENITH 106Z
RIVER HILL COME AWAY W/ME 9C
RIVER HILL 64S WYLDA 09W



0200SK00702 | Reg # 13787 | BD: Jan 1, 2021 | Frame: - | BW: 85 lbs | WW: 788 lbs | YW: 1425 lbs | Scrotal: -



Dam - RIVER HILL COME AWAY W/ME 9C



Sire - RIVER HILL 60W EXCALIBUR 345E

Judgement Call sparked worldwide interest as the much sought after high selling bull in the 2022 KFC Farms sale

Powerfully built with softness, soundness and a great eye appealing look Judgement Call is the Speckled Park sire to tie into MSTN negative, coat color EDED and PP

Actual numbers April 2022 IMF - 4.80, BF mm - 7.64, REA in - 14.44 and % Lean Meat Yield - 62.70

Judgement Call

ANDCHRIS

Extreme 23E

RAVEN MEADOWS MAGNUM 10N
UPTO SPECS ULYSSES 25U
PRAIRIE HILL REBA 154F

SPOTS 'N SPROUTS UNO 102U
SECOND CHANCE ZOHEY 3Z
TIA-ROSE OF SARA LEE 3T



0200SK00301 | Reg # 8242-PB | BD: Feb 24, 2017 | **Frame:** - | **BW:** 95 lbs | **WW:** 850 lbs | **YW:** 1430 lbs | **Scrotal:** -



Dam - SECOND CHANCE ZOHEY 3Z

Homozygous Polled

Myostatin Free

Well built sire with extra muscle expression and soundness of structure

Extreme

JSF

Trade Secret

11A

REDNECK WILD WILLY 2W (AI)(P)
YOGI GOES REDNECK
ASPEN ACRES LINDA LOU 10L

RIVER HILL SHOW BIZ 93S (P)
MONNERY RIVER 7W (P)
MONNERY RIVER 70



0200SK00701 | Reg # 4414-PT | BD: Mar 9, 2013 | **Frame:** - | **BW:** 77 lbs | **WW:** - | **YW:** - | **Scrotal:** 36.0 cm



Dam - MONNERY RIVER 7W (P)



Progeny - Wolf Lake Speckle Park

Back by popular demand! With an overwhelming amount of positive feedback all across the globe on the Trade Secret progeny this great sire was made available again

Daughters display strong maternal characteristics with great udders

Excellent calving ease sire with strong growth and muscle shape in progeny

Homozygous Polled, Myostatin Free

Trade Secret

SPECKLE PARK | 72

LLN *Kune* 1029G ET

0200KB00309 | Reg # FB46604 | BD: June 26, 2019 | BW: 66 lbs | WW: - | Tenderness: 10 | Quality Grade: AWA

JVP FUKUTSURU-068
BAR R JIRO 22T
BAR R MISS 2N

WSI OKUKANEMICHI
KUN KUNTZIDE E8 ET
KUNTZIDE MS AMAZING



A great calving ease option with the carcass quality you are looking for in a Wagyu sire

Kune boasts a SCD score of AA and Tenderness of 10

SMX *Sanmarro* 1836F

0200KB00308 | Reg # FB37157 | BD: July 9, 2018 | BW: 77 lbs | WW: 624 lbs | Tenderness: 6 | Quality Grade: AWA

SANJIRO 3
SANJIRO 5U
KOBE MIZUTANI 607E

MAZDA WAGYU JAMES
SMX NAGATAKU
MAZDA WAGYU MAZATLAN



Sanmarro has the look!

Big deep bodied bull to bring some stoutness into your herd while adding high quality marbling

SCD - AA

Horned

WAYGU | 73

MVP VAN DE PLASHOEVE

0200BB00922 | Reg # NL586358740 | BD: Jan 27, 2022



REMCO VAN'T ZANDEIND
VAN DE PLASHOEVE ALTAKJELD
ELKE 49 VAN DE PLASHOEVE

INDIEN ET DU TILLEUL
ELKE 46 VAN DE PLASHOEVE
ELKE 29 VAN DE PLASHOEVE

EMU DES PEUPLIERS

0200BB00914 | Reg # BE164498784 | BD: Sept 12, 2021



RESISTANT D'AU CHENE
GANACHE D'ACHET
AGILE D'ACHET

INDOCHINE DU LAC
CHAGA DES PEUPLIERS
SAGA DES PEUPLIERS

ILLUSTRE DU FALGI

0200BB00913 | Reg # BE264623725 | BD: Sept 13, 2021



REVEIL
BLASON DU CHENET
TOUPIE DU CHENET

REJOUI D ARGENTON
FINALE DU FALGI
DENIS DU FALGI

BLACK DE MARTINPRE

0200BB00919 | Reg # BE964606037 | BD: June 23, 2021



PUISSANT DE HOTTE
MERCATOR DE MARTINPRE
1805 DE MARTINPRE

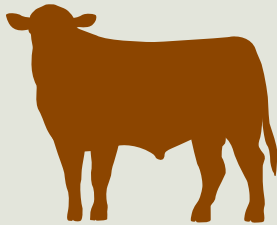
PHENOMENE DE MARTINPRE
5819 DE MARTINPRE
1845 DE MARTINPRE

COAT COLOUR INHERITANCE IN BEEF CATTLE

THERE ARE A NUMBER OF SETS OF GENES THAT DETERMINE COAT COLOUR IN CATTLE

THE MOST COMMON SETS ARE:

- Basic coat colour
- Dilution of basic colour
- Inhibitor (ie. Charolais)
- Solid Pattern
- White Face
- Spotted



THERE ARE SIX POSSIBLE COMBINATIONS OF BASIC COAT COLOUR:

RbRb	Animal is Black (or Grey)	Homozygous Black
RbR	Animal is Black (or Grey)	Heterozygous Black, Heterozygous Red
RR	Animal is Red	Homozygous Red
Rr	Animal is White	Homozygous White
Rbr	Animal is Black or Grey Roan	Heterozygous Black, Heterozygous White
Rr	Animal is Red Roan	Heterozygous Red, Heterozygous White

EACH ANIMAL CARRIES TWO COPIES OF THE DILUTION GENE

DD

Homozygous for dilution and the animal will be Diluted in colour. Dilutes Black to Grey and Dilutes Dark Red to light red or yellow

dd

Recessive and Homozygous non-dilution. The animal will not be diluted. Does not dilute black or red colour.

Dd

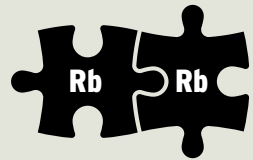
Heterozygous for dilution. The animal will be diluted in colour.

THERE ARE THREE FORMS OF THE GENE THAT CONTROL COAT COLOUR

Rb Black Gene

R Red Gene

r White Gene



Every Animal carries two genes for basic coat colour. An animal homozygous for that gene will breed true and can only pass that type onto his progeny such as RbRb Homozygous for Black

DILUTION GENE

D

Dilution Gene Dominates causing coat colour to be diluted

d

Non-Dilution Gene Recessive form of gene. Does not dilute coat colour

SEXED SEMEN PROTOCOLS

FIXED-TIME AI

Time for Fixed-time AI (TAI) should be considered as the approximate average time of insemination based on the number of females to inseminate, labor, and facilities. To optimize pregnancy success, it is recommended to *use sexed semen on females that have exhibited estrus before TAI* and conventional semen on females that have not exhibited estrus.

HEIFERS

7-day CO-Synch+CIDR®

Perform TAI with GnRH at 72 ± 2 hr after PG.



COWS

7-day CO-Synch+CIDR®

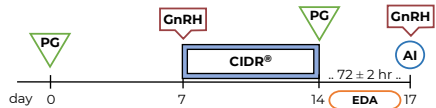
Perform TAI with GnRH at 60 to 66 hr after PG.



HEIFERS ONLY

PG-7 7-day CO-Synch+CIDR®

Perform TAI with GnRH 72 ± 2 hr after second PG. Heifers in estrus receive sexed semen, heifers not in estrus receive conventional semen. *All heifers can also be inseminated with either sexed or conventional semen.*

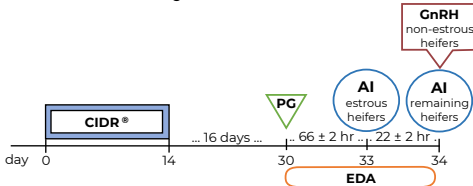


SPLIT-TIME AI (STAI)

Perform first TAI 66 ± 2 hr after PG in estrous females. GnRH administered at second TAI only in non-estrous females. Females detected in estrus by first or second TAI receive sexed semen. Females not in estrus receive conventional semen at second TAI.

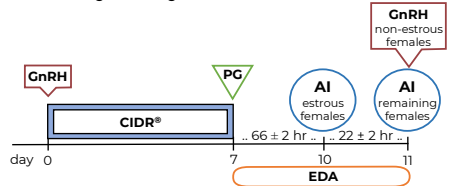
HEIFERS ONLY

14-day CIDR®-PG & STAI



COWS & HEIFERS

7-day CO-Synch+CIDR® & STAI



EDA Aervoe™, AIPaint™, Detect-her™, Estrorect™, Kamar™, Mark-her™, Paintstik™, Quick Shot™, Tell Tail™, Twist-Stik™

GnRH Cystorelin®, Factrel®, Fertagyl®, OvaCyst®, GONABreed®

PG estroPLAN®, Estrumate®, Lutalyse®, Lutalyse® HighCon, ProstaMate®, SYNCHSURE™

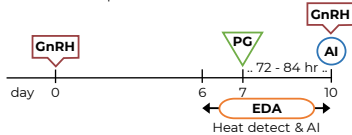
BEEF COW SYNCH PROTOCOLS

HEAT DETECTION & TAI

For best results perform AI 12 ± 2 hr after detection of estrus.
Use of estrus detection aids (EDA) is highly recommended.

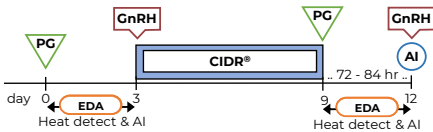
Select Synch & TAI

Heat detect & AI days 6 to 10 and TAI with GnRH all non-responders 72 - 84 hr after PG.



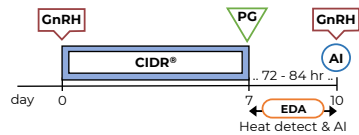
PG 6-day CIDR® & TAI

Heat detect & AI days 0 to 3. Insert CIDR + GnRH to non-responders, heat detect & AI days 9 to 12. TAI with GnRH non-responders 72 - 84 hr after PG and CIDR removal.
Protocol may be used in heifers.



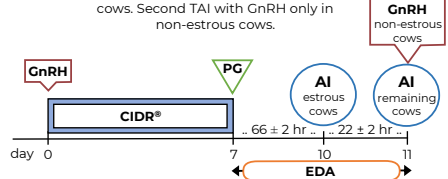
Select Synch+CIDR® & TAI

Heat detect & AI days 7 to 10 and TAI with GnRH all non-responders 72 - 84 hr after PG.



7-day CO-Synch+CIDR® & Split-TAI

Perform first TAI 66 ± 2 hr after PG in estrous cows. Second TAI with GnRH only in non-estrous cows.

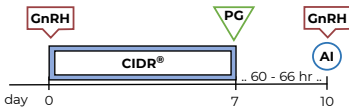


FIXED-TIME AI

Time for Fixed-time AI (TAI) should be considered as the approximate average time of insemination based on the number of females to inseminate, labor, and facilities.

7-day CO-Synch+CIDR®

Perform TAI with GnRH at 60 ± 66 hr after PG.



7&7 Synch

Perform TAI with GnRH at 66 ± 2 hr after CIDR removal.



5-day CO-Synch+CIDR®

Perform TAI with GnRH at 72 ± 2 hr after CIDR removal. Two injections of PG 8 ± 2 hr apart are required for this protocol.



Bos indicus PG 5-day+CIDR®

Perform TAI with GnRH at 66 ± 2 hr after CIDR removal.



EDA

Aervoe™, AIPaint™, Detect-her™, Estroetect™, Kamar™, Mark-her™, Paintstik™, Quick Shot™, Tell Tail™, Twist-Stik™

GnRH

Cystorelin®, Factrel®, Fertagyl®, OvaCyst®, GONABreed®

PG

estroPLAN®, Estrumate®, Lutalyse®, Lutalyse® HighCon, ProstaMate®, SYNCHSURE™

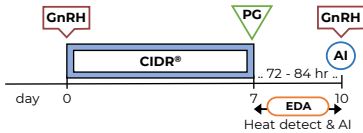
BEEF HEIFER SYNCH PROTOCOLS

HEAT DETECTION & TAI

For best results perform AI 12 ± 2 hr after detection of estrus.
Use of estrus detection aids (EDA) is highly recommended.

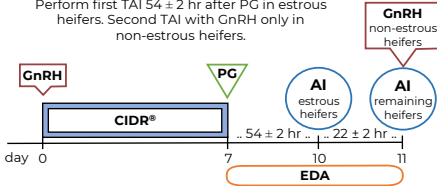
Select Synch+CIDR® & TAI

Heat detect & AI days 7 to 10 and TAI with GnRH all non-responders 72 - 84 hr after PG.



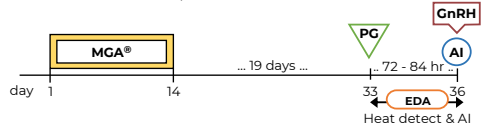
7-day CO-Synch+CIDR® & Split-TAI

Perform first TAI 54 ± 2 hr after PG in estrous heifers. Second TAI with GnRH only in non-estrous heifers.



MGA®-PG & TAI

Heat detect & AI days 33 to 36 and TAI with GnRH all non-responders 72 - 84 hr after PG.



14-day CIDR®-PG & TAI

Heat detect & AI days 30 to 33 and TAI with GnRH all non-responders 72 \pm 2 hr after PG.



FIXED-TIME AI

Time for Fixed-time AI (TAI) should be considered as the approximate average time of insemination based on the number of females to inseminate, labor, and facilities.

5-day CO-Synch+CIDR®

Perform TAI with GnRH at 60 ± 4 hr after CIDR removal. Two injections of PG 8 \pm 2 hr apart are required for this protocol.



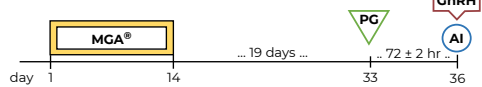
7-day CO-Synch+CIDR®

Perform TAI with GnRH at 54 ± 2 hr after PG.



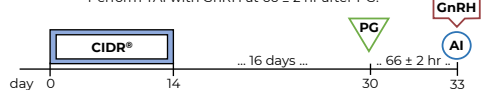
MGA®-PG & TAI

Perform TAI with GnRH at 72 ± 2 hr after PG.



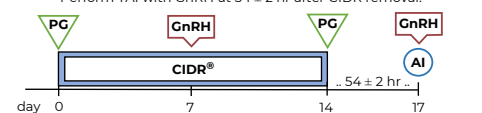
14-day CIDR®-PG & TAI

Perform TAI with GnRH at 66 ± 2 hr after PG.



7&7 Synch

Perform TAI with GnRH at 54 ± 2 hr after CIDR removal.



EDA

Aervoe™, AIPaint™, Detect-her™, Estrorect™, Kamar™, Mark-her™, Paintstik™, Quick Shot™, Tell Tail™, Twist-Stik™

GnRH

Cystorelin®, Factrel®, Fertagyl®, OvaCyst®, GONABreed®

PG

estroPLAN®, Estrumate®, Lutalyse®, Lutalyse® HighCon, ProstaMate®, SYNCHSURE™

TERMINOLOGY & DEFINITIONS

PERFORMANCE DATA

BD: Birth Date

FRAME: A tool to evaluate the mature skeletal size of an animal with a score based on actual measurement of hip height.

BW: Birth Weight, **WW:** Weaning Weight,

YW: Yearling Weight

SCROTAL: Physical measurement of scrotal circumference.

EXPECTED PROGENY DIFFERENCES (EPD)

EPDs are the prediction of how future progeny are expected to perform relative to the progeny of other animals in a breed database.

ACCURACY (ACC), is the reliability that can be placed on the EPD. An accuracy of close to 1.0 indicates higher reliability. Accuracy is impacted by the number of progeny and ancestral records included in the analysis.

PERCENTILE RANK (RANK %), is the number that reflects the position, in terms of percentile rank, that this EPD is in for the animal's breed.

CED (CALVING EASE DIRECT EPD), is expressed as a difference in percentage of unassisted births, with a higher value indicating greater calving ease. It predicts the average difference in ease with which a sire's calves will be born when he is bred to first-calf heifers

BW (BIRTH WEIGHT EPD), expressed in pounds, is a predictor of a sire's ability to transmit birth weight to his progeny compared to that of other sires.

WW (WEANING WEIGHT EPD), expressed in pounds, is a predictor of a sire's ability to transmit weaning growth to his progeny compared to that of other sires.

YW (YEARLING WEIGHT EPD), expressed in pounds, is a predictor of a sire's ability to transmit yearling growth to his progeny compared to that of other sires.

RADG (RESIDUAL AVERAGE DAILY GAIN), expressed in pounds per day, is a predictor of a sire's genetic ability for post-weaning gain in future progeny compared to that of other sires, given a constant amount of feed consumed.

DMI (DRY MATTER INTAKE EPD), is expressed in pounds per day and describes the feed intake potential for weaned calves from one sire compared to the feed intake potential of calves from another sire.

YH (YEARLING HEIGHT EPD), is a predictor of a sire's ability to transmit yearling height, expressed in inches, compared to the that of other sires.

SC (SCROTAL CIRCUMFERENCE EPD), expressed in centimeters, is a predictor of the difference in transmitting ability for scrotal size compared to that of other sires.

DOC (DOCILITY EPD), is expressed as a difference in yearling cattle temperament, with a higher value indicating more favourable docility. It predicts the average difference of progeny from a sire in comparison with another sire's calves.

CLAW (CLAW SET EPD), is expressed in units of claw-set score, with a lower EPD being more favourable indicating a sire will produce progeny with more ideal claw set.

ANGLE (FOOT ANGLE EPD), is expressed in units of foot-angle score, with a lower EPD being more favourable indicating a sire will produce progeny with more ideal foot angle.

PAP (PULMONARY ARTERIAL PRESSURE EPD), is expressed in mm of Mercury (mmHg), with a lower EPD being more favourable indicating a sire should produce progeny with a lower PAP score. PAP score is an indicator of susceptibility to high altitude disease commonly experienced at elevations greater than 5,500 feet.

HP/HPG (HEIFER PREGNANCY EPD), is the probability of a sire's daughters becoming pregnant as first-calf heifers during a normal breeding season.

CEM/MCE (CALVING EASE MATERNAL EPD), is expressed as a difference in percentage of unassisted births with a higher value indicating greater calving ease in first-calf daughters. It predicts the average ease with which a sire's daughters will calve as first-calf heifers when compared to daughters of other sires.

MILK (MATERNAL MILK EPD), is a predictor of a sire's genetic merit for milk and mothering ability as expressed in his daughters compared to daughters of other sires. In other words, it is that part of a calf's weaning weight attributed to milk and mothering ability.

MWW, MWWT (MATERNAL WEANING WEIGHT EPD), is the expected weaning weight of a sire's daughters expressed in pounds, a higher value is preferred.

TM (TOTAL MATERNAL EPD), reflects a sire's ability to transmit growth genetics combined with milking abilities to his daughters.

MW, COW W (MATURE WEIGHT EPD), expressed in pounds, is a predictor of the difference in mature weight of daughters of a sire compared to the daughters of other sires.

MATURE HEIGHT EPD (MH), expressed in inches, is a predictor of the difference in mature height of a sire's daughters compared to daughters of other sires.

COW ENERGY VALUE (\$EN), expressed in dollars savings per cow per year, assesses differences in cow energy requirements as an expected dollar savings difference in daughters of sires. A larger value is more favourable when comparing two animals (more dollars saved on feed energy expenses). Components for computing the cow \$EN savings difference include lactation energy requirements and energy costs associated with differences in mature cow size.

ME (RED ANGUS MAINTENANCE ENERGY EPD), predicts differences in a sire's daughters maintenance energy requirements and is expressed in Mcal/Month.

SCF (HEREFORD SUSTAINED COW FERTILITY EPD), is a prediction of a cow's

ability to continue to calve from three years of age through twelve years of age, given she calved as a two-year-old.

STAY (RED ANGUS, SIMMENTAL & LIMOUSIN STAYABILITY EPD), predicts the probability of a sire's daughters remaining productive and having longevity.

UDDER & TEAT EPDs, are reported on the same scoring scale and are a prediction of a sire's daughters udder suspension and teat size when managed in the same environment.

CW (CARCASS WEIGHT EPD), expressed in pounds is a predictor of the differences in hot carcass weight of a sire's progeny compared to progeny of other sires.

MARB (MARBLING EPD), expressed as a fraction of the difference in USDA marbling score of a sire's progeny compared to progeny of other sires.

RE, REA (RIBEYE AREA EPD), expressed in square inches, is a predictor of the difference in ribeye area of a sire's progeny compared to progeny of other sires.

FAT (FAT THICKNESS EPD), expressed in inches, is a predictor of the differences in external fat thickness at the 12th rib (as measured between the 12th and 13th ribs) of a sire's progeny compared to progeny of other sires.

AMERICAN ANGUS \$VALUE INDEXES

\$Value indexes are multi-trait selection indexes, expressed in dollars per head, to assist beef producers by adding simplicity to genetic selection decisions. The \$Value is an estimate of how future progeny of each sire are expected to perform, on average, compared to progeny of other sires in the database if the sires were randomly mated to cows and if calves were exposed to the same environment.

\$M (MATERNAL WEANED CALF VALUE), an index, expressed in dollars per head, predicts profitability differences in progeny from conception to weaning.

\$W (WEANED CALF VALUE), an index, expressed in dollars per head, to predict profitability differences in progeny due to genetics from birth to weaning.

\$F (FEEDLOT VALUE), an index, expressed in dollars per head, to predict profitability differences in progeny due to genetics for post-weaning feedlot merit compared to the progeny of other sires.

\$G (GRID VALUE), an index, expressed in dollars per carcass, to predict profitability differences in progeny due to genetics for carcass grid merit compared to progeny of other sires.

\$B (BEEF VALUE), a terminal index, expressed in dollars per carcass, to predict profitability differences in progeny due to genetics for post-weaning and carcass traits.

\$C (COMBINED VALUE), an index, expressed in dollars per head, which includes all traits that make up both Maternal Weaned Calf Value (\$M) and Beef Value (\$B).

AMERICAN SIMMENTAL INDEXES

Economic selection index, also referred to as \$ Indexes, blend EPD for economically relevant traits (ERTs) and the economics associated with cattle production into a single value.

\$API (ALL-PURPOSE INDEX), evaluates sires for use on the entire cow herd (bred to both Angus first-calf heifers and mature cows) with the portion of their daughters required to maintain herd size retained and the remaining heifers and steers put on feed and sold on a grid (carcass grade and yield).

\$TI (TERMINAL INDEX), evaluates sires for use on mature Angus cows with all offspring put on feed and sold on a grid (grade and yield). This index is for use in a straight terminal breeding program and a higher value is more favorable.

ADDITIONAL TERMS

PUREBRED is defined as having the blood percentage of the breed at 99.9 % or less and have some influence of blood from another breed.

FULLBLOOD cattle are 100% pure and have no influence from any other breed.

HETEROZYGOUS BLACK sires are black but carry one red gene and will produce some red calves when mated to red females.

HOMOZYGOUS BLACK sires should sire black calves when mated to red or black cows. These bulls have been verified through independent third party DNA testing.

POLLED cattle do not carry the gene for horns.

HOMOZYGOUS POLLED These bulls have a 99.9% probability of being homozygous polled, having been verified either through DNA testing or through mating to horned cows. All calves from these sires will be polled.

HETEROZYGOUS POLLED These bulls are polled but carry one polled gene and one horned gene, therefore, they may sire horned calves when mated to horned cows or other heterozygous polled cows.

HORNED These bulls carry the horned gene and will only produce horned calves when mated to other horned females.

SCURED The major gene for scurs, SC, is thought to involve an inheritance process that is separate from the process that determines if an animal is polled. Scurs are incompletely developed horns which are generally loose and moveable beneath the skin. In older animals they may become attached to the skull. Because the gene for scurs is transmitted separately, it generally has no effect on the presence or absence of horns. Not all cattle carry the gene for scurs and not all polled cattle lack the gene.

PROGRESSIVE ATAXIA (PA) of Charolais cattle is a neurodegenerative disease of the central nervous system inherited in an autosomal recessive fashion meaning 2 copies of the defective gene are needed for presentation of the disease. Bulls marked as PAF are 'PA Free', determined by genetic testing completed at the National Association level.

ESTRUS SYNCHRONIZATION Using synthetic hormones to make a group of females come into heat to be bred at the same time.

INDEX



NAME	PAGE	PRICE (CDN)	CALVING EASE	PERFORMANCE	MATERNAL	CARCASS WEIGHT	MARBLING	RIB EYE AREA
ANGUS								
ATLANTIS	20	\$65			✓			✓
ATTRACTIVE	26	\$30		✓				
BADGER	15	\$85		✓	✓	✓		✓
BRUTUS	24	\$50		✓	✓			
CALDWELL	9	\$65	✓	✓	✓			
CHARISMA	17	\$85					✓	
COLOSSAL	10	\$35	✓		✓		✓	
COURAGE	19	\$85						✓
EXPRESSION	22	\$50						
HIGH COTTON	11	\$25	✓	✓		✓		✓
IMMENSITY	13	\$35	✓	✓		✓		✓
LAWMAN	14	\$30			✓		✓	✓
LEGEND	21	\$30	✓					
MAXIMA	27	\$35		✓		✓		✓
MOGUL	33	\$30		✓	✓		✓	✓
NEVADA	32	\$25	✓		✓		✓	✓
PROFOUND	28	\$65		✓	✓	✓		
RISE N SHINE	16	\$65				✓	✓	
SILVER STAR	23	\$25						
SPECIALIST	31	\$30	✓		✓			
STOCK FUND	12	\$25	✓	✓		✓	✓	
TANKER	25	\$45		✓	✓	✓	✓	✓
TENDERLOIN	29	\$30		✓		✓	✓	
TRUST	18	\$30				✓		
UPGRADE	30	\$40		✓		✓	✓	
RED ANGUS								
CUSTOM MADE	39	\$25						✓
FURY	40	\$30			✓			
MOSSY OAK	38	\$50	✓	✓	✓	✓		✓
OUTCOME	36	\$30	✓					
PAYLOAD	37	\$40				✓	✓	✓
REVOLUTION	34	\$50			✓	✓	✓	
SOVEREIGN	35	\$30	✓	✓			✓	
SIMMENTAL								
AFFINITY	46	\$30	✓					
ASSET	45	\$30		✓		✓		✓
DIMENSION	47	\$35		✓		✓		✓
EPIC	43	\$30	✓	✓				
GROWLER	49	-	✓		✓	✓	✓	✓
JAVA	48	\$30	✓				✓	✓
LIMITLESS	42	\$35	✓		✓	✓		
RIGHT NOW	41	\$45	✓	✓			✓	✓
TRUE NORTH	44	\$55	✓					✓

INDEX



NAME	PAGE	PRICE (CDN)	CALVING EASE	PERFORMANCE	MATERNAL	CARCASS WEIGHT	MARBLING	RIB EYE AREA
FLECKVIEH								
HEXTOR	52	\$25			✓		✓	
INDEPENDENCE	51	\$30		✓	✓	✓	✓	
JAMIE	50	\$45	✓	✓	✓	✓		
EDDY	53	\$25					✓	✓
ROCKET	55	\$25						✓
SENSATION	54	\$30					✓	✓
CHAROLAIS								
ABUNDANCE	58	\$40	✓	✓	✓	✓		
CASINO	61	\$25						
GRIFFIN	62	\$25	✓					
LEVEL UP	57	\$25						
SUBSTANTIAL	59	\$30	✓	✓	✓	✓	✓	✓
TRIED AND TRUE	60	\$40	✓		✓	✓		✓
TRIUMPH	63	\$30		✓		✓		✓
WHEATON	56	\$45	✓		✓			
HEREFORD								
CANDID	64	\$45	✓	✓				✓
BUCCANEER	65	\$25	✓		✓			✓
EXPLORER	66	\$25	✓				✓	
SHORTHORN								
PHANTOM	67	\$25	✓	✓	✓		✓	
LIMOUSIN & LIMFLEX								
FORMATION	69	-	✓					✓
GRASS ROOTS	68	\$30	✓					
HALIBUT	69	-						✓
SPECKLE PARK								
EXTREME	71	\$25						
JUDGEMENT CALL	70	\$45						
TRADE SECRET	72	\$30						
WAYGU								
KUNE	73	\$30						
SANMARRO	73	\$30						
BELGIAN & BRITISH BLUE								
BLACK	74	\$30						
EMU	74	\$30						
ILLUSTRE	74	\$30						
MVP	74	\$30						



SEMEX[®]

Genetics for Life[®]

www.semex.com/beef

