



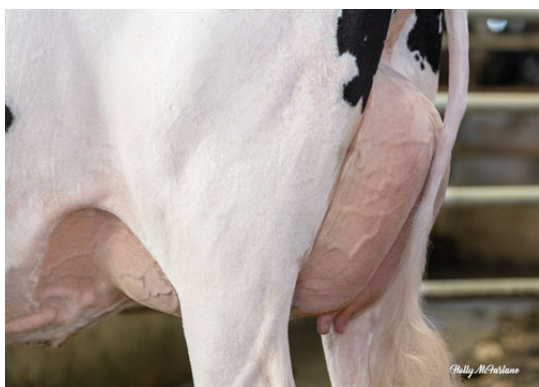
AOT HIGHJUMP
 COOKIECUTTER HOLLYN
 S-S-I PR RENEGADE
 COOKIECUTTER SLM HOPLITE VG-88-5YR-USA
 OCD SPRING SLAMDUNK
 COOKIECUTTER RUBI HOMEY EX-91-2E-USA DOM

Reg. #: HO840M3212874372 aAa: 432156 DMS: 135,123
 HH1F HH2F HH3F HH4F HH5F HH6F HCDF HMWF Kappa - Casein: BB Beta - Casein: A1A2
 DPF RDF BLF CNF BYF MWF CVF

RZG	142						Immunity	105	
RZ€	1879	RZE	114	RZM	144	Pers.	114	Kälber Immunity	104
RZN	114	RZS	117	RZD	90	RZR	104	RZ-Ges	109

MILCHLEISTUNG			VIT 04/2024	
			kg	%
Töchter		Milch	1009	
Betriebe		Fett	83	0,38
Sicherheit	74	Eiweiß	51	0,14

EXTERIEUR			VIT 04/2024	
Betriebe:	Töchter:	Sicherheit: 71%		
Milchtyp	112	Fundament	99	
Körper	107	Euter	113	



WESTCOAST HLYSMK ZAZZLE 14058
 DAUGHTER



WESTCOAST HLYSMK ZAZZLE 14058
 DAUGHTER



COOKIECUTTER SLM HOPLITE
 GRANDDAM

			88	100	112	124	
Größe	107	klein	[Bar chart showing position between 88 and 124]				groß
Rippenstruktur	109	flach	[Bar chart showing position between 88 and 124]				gewölbt
Körpertiefe	108	wenig	[Bar chart showing position between 88 and 124]				viel
Stärke	101	schwach	[Bar chart showing position between 88 and 124]				stark
Beckenneigung	98	ansteigend	[Bar chart showing position between 88 and 124]				abfallend
Beckenbreite	103	schmal	[Bar chart showing position between 88 and 124]				breit
Hinterbeinwinkelung	100	steil	[Bar chart showing position between 88 and 124]				gewinkelt
Klauen	108	flach	[Bar chart showing position between 88 and 124]				hoch
Sprunggelenk	92	derb	[Bar chart showing position between 88 and 124]				trocken
Vorderbeinstellung	99	innen	[Bar chart showing position between 88 and 124]				gerade
Hinterbeinstellung	101	hackeneng	[Bar chart showing position between 88 and 124]				parallel
Bewegung	97	schlecht	[Bar chart showing position between 88 and 124]				gut
Hintereuterhöhe	118	niedrig	[Bar chart showing position between 88 and 124]				hoch
Zentralband	99	schwach	[Bar chart showing position between 88 and 124]				stark
Strichplatzierung vorne	106	außen	[Bar chart showing position between 88 and 124]				innen
Strichplatzierung hinten	109	außen	[Bar chart showing position between 88 and 124]				innen
Vordereuteraufhängung	111	lose	[Bar chart showing position between 88 and 124]				fest
Euterbalance	111	hinten	[Bar chart showing position between 88 and 124]				vorne
Eutertiefe	106	tief	[Bar chart showing position between 88 and 124]				hoch
Strichlänge	98	kurz	[Bar chart showing position between 88 and 124]				lang