



MAVERICK-I CRUSH

OH-RIVER-SYC MOGAL BRYLAN VG-87-4YR-USA

MOUNTFIELD SSI DCY MOGUL

OH-RIVER-SYC MRDN BILLIE EX-91-4YR-USA

SULLY HART MERIDIAN

SANDY-VALLEY ATWD BARBIE EX-91-5YR-USA

Reg. #: HO840M3135145001 EX-92-CAN aAa: 324165 DMS: 126
 HH1F HH2F HH3F HH4F HH5C HH6F HCDF HMWF Kappa - Kasein: BE Beta - Casein: A1A2
 DPF RDF BLF CNF BYF MWF CVF

RZG	96					Immunity	91
RZ€	-447	RZE	127	RZM	84	Pers.	95
RZN	104	RZS	92	RZD	104	RZR	104
						Kälber Immunity	106
						RZ-Ges	94

MILCHLEISTUNG			VIT 04/2024	
			kg	%
Töchter	6482	Milch	-159	
Betriebe	2461	Fett	-32	-0,25
Sicherheit	98	Eiweiß	-17	-0,11

EXTERIEUR			VIT 04/2024	
Betriebe: 1728	Töchter: 4387	Sicherheit: 95%		
Milchtyp	126	Fundament	105	
Körper	100	Euter	129	



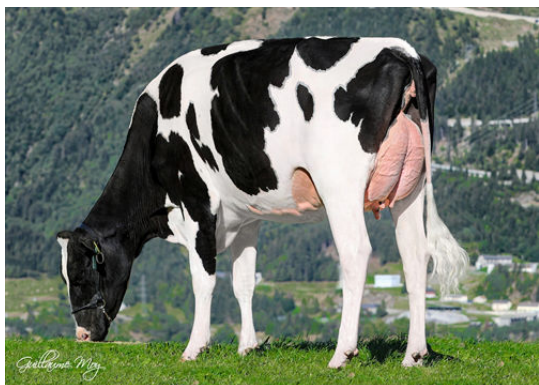
PANDA PURE GOLD RED

DAUGHTER



HOWARD-VIEW CRSBUL DISCODANCER

DAUGHTER



DG CRUSHABULL ATLANTIS

DAUGHTER

			88	100	112	124	
Größe	127	klein	[Bar chart showing 127 is between 100 and 112]				groß
Rippenstruktur	98	flach	[Bar chart showing 98 is below 88]				gewölbt
Körpertiefe	113	wenig	[Bar chart showing 113 is between 100 and 112]				viel
Stärke	86	schwach	[Bar chart showing 86 is below 88]				stark
Beckenneigung	97	ansteigend	[Bar chart showing 97 is between 88 and 100]				abfallend
Beckenbreite	108	schmal	[Bar chart showing 108 is between 100 and 112]				breit
Hinterbeinwinkelung	127	steil	[Bar chart showing 127 is above 124]				gewinkelt
Klauen	88	flach	[Bar chart showing 88 is at the 88 mark]				hoch
Sprunggelenk	124	derb	[Bar chart showing 124 is at the 124 mark]				trocken
Vorderbeinstellung	101	innen	[Bar chart showing 101 is between 88 and 100]				gerade
Hinterbeinstellung	97	hackeneng	[Bar chart showing 97 is between 88 and 100]				parallel
Bewegung	110	schlecht	[Bar chart showing 110 is between 100 and 112]				gut
Hintereuterhöhe	128	niedrig	[Bar chart showing 128 is above 124]				hoch
Zentralband	105	schwach	[Bar chart showing 105 is between 100 and 112]				stark
Strichplatzierung vorne	131	außen	[Bar chart showing 131 is above 124]				innen
Strichplatzierung hinten	120	außen	[Bar chart showing 120 is between 100 and 112]				innen
Vordereuteraufhängung	128	lose	[Bar chart showing 128 is above 124]				fest
Euterbalance	118	hinten	[Bar chart showing 118 is between 100 and 112]				vorne
Eutertiefe	126	tief	[Bar chart showing 126 is between 112 and 124]				hoch
Strichlänge	90	kurz	[Bar chart showing 90 is below 88]				lang