



WESTENRADE SPRING
 SILVERRIDGE V MOGUL EVON VG-87-2YR-CAN 9*
 MOUNTFIELD SSI DCY MOGUL
 VELTHUIS S G SNOW EVENING VG-87-2YR-CAN 11*
 FLEVO GENETICS SNOWMAN
 CALBRETT PLANET EVE VG-87-7YR-CAN 18*

GLPI +3211 PRO\$ 1859

DPF RDF BLF CNF BYF MWF CVF HH1F HH2F HH3F HH4F HH5F HH6F HCDF HMWF

Reg. #: HOCANM12264620 aAa: 432516 DMS: 135,345
 Född: 09/13/2015 Kappa kasein: AA Beta kasein: A1A2

PRODUKTION 370 Bes 929 Dottrar 99% Säkh GEBV 24*AUG

| | | | | |
|------------------------|----------------------|--------------------------|------------------|--------------------|
| Mjök kg 1309 | Fett kg 85 | Fett % +0.27 | Protein kg 49 | Protein % +0.03 |
| Foderomvandling 114 | Underhållskrav 96 | Metan Effektivitet 87 | | |

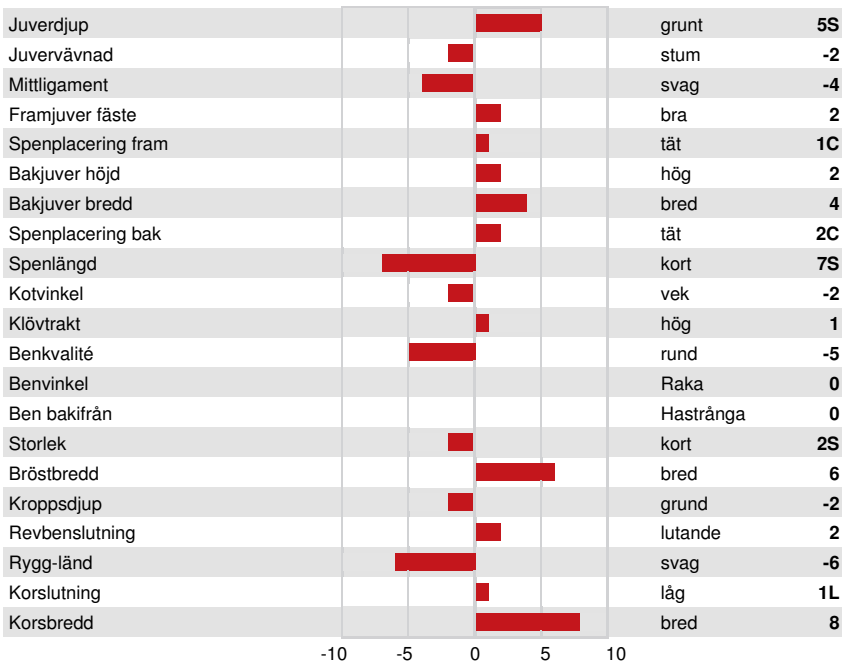
Döttrars medeltal (ME) Mjök 13,428 kg Fett 553 kg Protein 437 kg

FUNKTIONSEGENSKAPER Immunitet 94

| | | | |
|------------------|-----|----------------------------------|-----|
| Livslängd | 100 | Kalv Immunitet | 98 |
| Celltal | 96 | Kalvningar F | 104 |
| Dotterfertilitet | 95 | Kalvningar MF | 104 |
| Hullbedömning | 102 | Mjökbarhet | 105 |
| Mastit resistens | 97 | Lynne | 101 |
| Laktationskurva | 104 | Resistens mot metabola sjukdomar | 95 |

HELHETSINTRYCK 331 Bes 837 Dottrar 99% Säkh GEBV 24*AUG

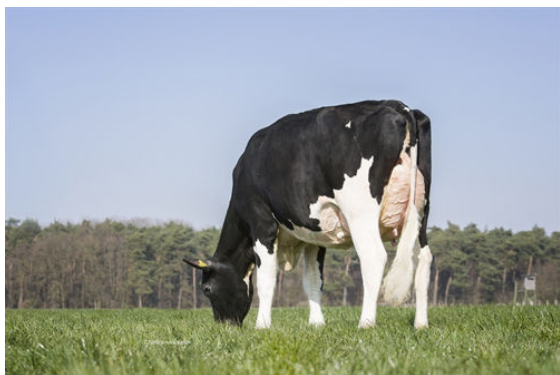
| | | | |
|----------------|---|-------------------|----|
| Helhetsintryck | 1 | Dairy Strength | 3 |
| Juvar | 0 | Kors | 1 |
| Klövar & ben | 1 | GP eller bättre % | 72 |



PROGENESIS IMAX PERFECTION



PROGENESIS IMAX HIJINKS



HERZ P IMAX