



PROGENESIS COMPLETELY
 SHJ LISTOWEL MACKENZIE EX-90%-6YR-USA
 HILLVIEW LISTOWEL-P
 DP AXIS MCKENNA 1983 EX-90%-5YR-USA
 SUGAR GROVE VALENTINO AXIS
 DP LOUIE MYALEAN 853 EX-90%-4YR-USA

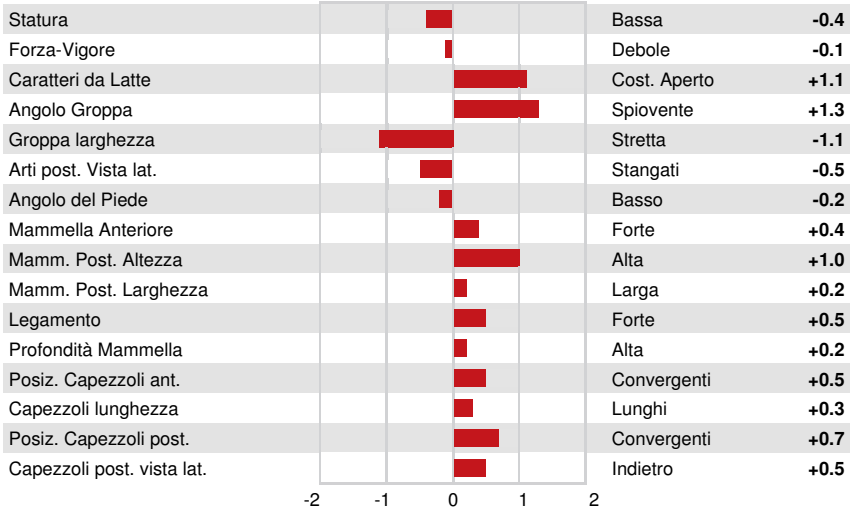
| | | | |
|--------------------------|-------------------|--------------------|--|
| GJPI 79 | BBR 100 JH1F JNSF | | |
| Reg. #: JE840M3200644093 | aAa: 423615 | DMS: 126,246 | |
| Data nascita: 12/05/2018 | Kappa Caseina: AB | Beta Caseina: A2A2 | |

| | | | | | |
|-------------------|------------|-------------|--------------|----------------|--|
| PRODUZIONE | 55 Allev. | 1554 Figlie | 99% Att. | CDCB-G / 08-24 | |
| Latte lbs | Grasso lbs | Grasso % | Proteina lbs | Proteina % | |
| 1579 | 32 | -0.22 | 45 | -0.06 | |
| NM\$ 419 | CM\$ 412 | FM\$ 438 | GM\$ 420 | DWP\$ 485 | |

EVM Figlie in Canada Latte **20,390 lbs** Grasso **1,001 lbs** Proteina **775 lbs**

| | | |
|--------------------------|-------------|-------------------------------|
| TRATTI GESTIONALI | Immunity 93 | |
| Vita produttiva | 2.0 | Immunità vitelli 103 |
| Cellule somatiche | 3.25 | Tasso Concepimento Vacche 1.5 |
| Fertilità Figlie | -0.4 | Tasso Concepimento Manze 3.4 |
| Ind. Sopravvivenza | -2.3 | |
| Ind. Sopravvivenza Manze | -0.9 | |

| | | | | |
|------------------------|-----------|------------|----------|----------------|
| MORFOLOGIA | 35 Allev. | 729 Figlie | 99% Att. | AJCA-G / 08-24 |
| PTA Tipo | 1.0 | | | |
| Indice Mammella Jersey | 11.9 | | | |



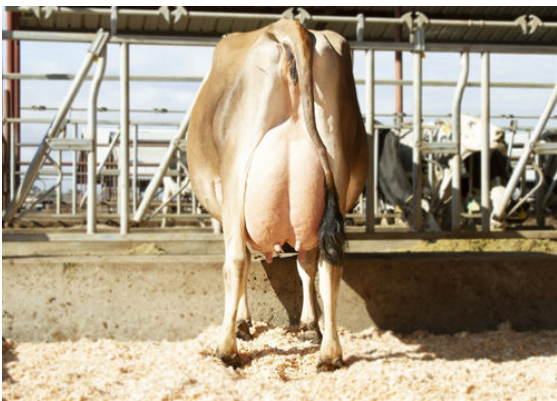
TENPENNY DAUGHTER GROUP

L TO R - PROGENESIS MARACHUTE, JX VIERRA NOI(5), PROGENESIS DOROTHY, PROGENESIS MARYPOPPINS



PROGENESIS MARAHUTE

DAUGHTER



SHJ LISTOWEL MACKENZIE

DAM