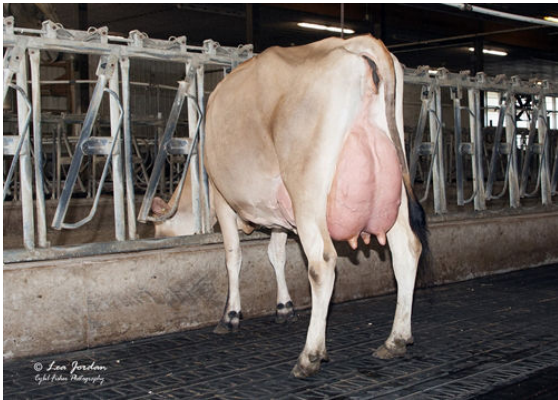




PRIMUS COMANCHE KESTREL-P  
 JX RIVER VALLEY THRASHER 2334 {5}  
 JX CDF JLS PILGRIM THRASHER {6}  
 JX RIVER VALLEY ENZO MACNCHEZ 6612 {4} EX-91%-4YR-USA  
 JX CLOVER PATCH AVON ENZO {3}  
 RIVER VALLEY LSTWL MACNCHEZ 5055 EX-91%-3YR-USA



JX RIVER VALLEY ENZO MACNCHEZ 6612 {4}  
 GRANDDAM



RIVER VALLEY LSTWL MACNCHEZ 5055  
 THIRD DAM



JER-Z-BOYZ MACNCHEZ 48947  
 FOURTH DAM

**GJPI 181** BBR 100 JH1F JNSF

Reg. #: JE840M3250476712      aAa: 423615      DMS: 234,345  
 Born: 08/12/2022      Kappa Casein: BB      Beta Casein: A2A2

| PRODUCTION              |                      | G Herds | G Dtrs | 76% Rel               | CDCB-G / 04-24           |                           |
|-------------------------|----------------------|---------|--------|-----------------------|--------------------------|---------------------------|
| Milk lbs<br><b>2004</b> | Fat lbs<br><b>79</b> |         |        | Fat %<br><b>-0.08</b> | Protein lbs<br><b>68</b> | Protein %<br><b>-0.02</b> |
| NM\$ <b>796</b>         | CM\$ <b>798</b>      |         |        | FM\$ <b>762</b>       | GM\$ <b>720</b>          | DWP\$ <b>880</b>          |

**HEALTH & REPRODUCTION** Immunity 100

|                         |             |                        |             |
|-------------------------|-------------|------------------------|-------------|
| Productive Life         | <b>4.7</b>  | Calf Immunity          | <b>100</b>  |
| Somatic Cell Score      | <b>3.10</b> | Cow Conception Rate    | <b>-0.1</b> |
| Daughter Pregnancy Rate | <b>-0.8</b> | Heifer Conception Rate | <b>1.4</b>  |
| Livability              | <b>1.7</b>  |                        |             |
| Heifer Livability       | <b>0.2</b>  |                        |             |

**CONFORMATION** AJCA-G / 04-24

|                    |             |
|--------------------|-------------|
| PTAT               | <b>1.0</b>  |
| Jersey Udder Index | <b>13.6</b> |

