

JX Mastodon{6}

JX PROGENESIS MASTODON {6} 0200JE01475 JX MONARCH{5} x JX SINATRA{4} x JX CHIEF{6}



JX PROGENESIS MONARCH {5}
 JX PROGENESIS MINNIE {5} VG-80%-2YR-USA
 JX VIERRA SINATRA {4}
 PROGENESIS MADISON EX-90%-3YR-USA
 JX RIVER VALLEY CHIEF {6}
 RACHELLES VICEROY LOUISE VG-88%-6YR-USA

GJPI 198			BBR 100 JH1F JNSF	
Reg. #: JE840M3254283358		aAa:	DMS: 561,126	
Born: 10/29/2022		Kappa Casein: BB	Beta Casein: A2A2	
PRODUCTION G Herds G Dtrs 74% Rel CDCB-G / 04-24				
Milk lbs 1341	Fat lbs 64	Fat % 0.00	Protein lbs 53	Protein % +0.02
NM\$ 851	CM\$ 862	FM\$ 786	GM\$ 728	DWP\$ 1236



HEALTH & REPRODUCTION			Immunity	
Productive Life	7.6	Calf Immunity		
Somatic Cell Score	2.82	Cow Conception Rate	-0.1	
Daughter Pregnancy Rate	-1.2	Heifer Conception Rate	2.2	
Livability	0.5			
Heifer Livability	0.9			

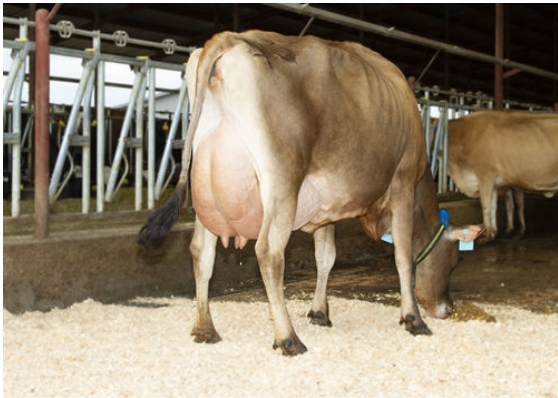
JX PROGENESIS MINNIE {5}
DAM

CONFORMATION G Herds G Dtrs 78% Rel AJCA-G / 04-24		
PTAT	2.0	
Jersey Udder Index	23.7	



Stature			Tall	+0.7
Strength			Frail	-0.2
Dairy Form			Open Rib	+1.3
Rump Angle			High	-1.1
Rump Width			Narrow	-0.4
Rear Legs Side View			Posty	-0.6
Foot Angle			Steep	+0.4
Fore Attachment			Strong	+2.9
Rear Udder Height			High	+2.5
Rear Udder Width			Wide	+1.1
Udder Cleft			Weak	0.0
Udder Depth			Shallow	+1.7
Fore Teat Placement			Close	+1.2
Teat Length			Long	+0.1
Rear Teat Rear View			Close	+0.9
Rear Teat Side View			Back	+0.4

PROGENESIS MADISON-
GRANDDAM



RACHELLES VICEROY LOUISE
THIRD DAM