



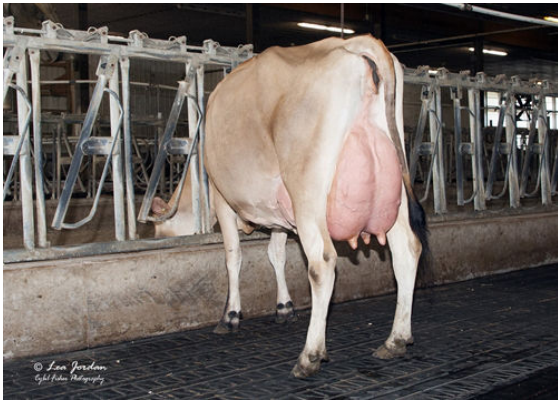
AHLEM CAMELOT
 RIVER VALLEY JIGGY MAC 2344 DES-77%-3YR-USA
 JX KASH-IN GOT JIGGY {6}
 RIVER VALLEY LSTWL MACNCHEZ 5055 EX-91%-3YR-USA
 HILLVIEW LISTOWEL-P
 JER-Z-BOYZ MACNCHEZ 48947 VG-87%-3YR-USA

GJPI 140			BBR 100 JH1F JNSF	
Reg. #: JE840M3239528781		aAa: 432651	DMS: 561,126	
Born: 07/09/2022		Kappa Casein: BB	Beta Casein: A2A2	
PRODUCTION G Herds G Dtrs 75% Rel CDCB-G / 04-24				
Milk lbs	Fat lbs	Fat %	Protein lbs	Protein %
1071	48	-0.02	42	+0.01
NM\$ 560	CM\$ 570	FM\$ 508	GM\$ 442	DWP\$ 826



RIVER VALLEY LSTWL MACNCHEZ 5055
 GRANDDAM

HEALTH & REPRODUCTION			Immunity 100	
Productive Life	4.7	Calf Immunity	99	
Somatic Cell Score	2.80	Cow Conception Rate	-0.9	
Daughter Pregnancy Rate	-2.1	Heifer Conception Rate	-0.7	
Livability	0.4			
Heifer Livability	0.6			



RIVER VALLEY LSTWL MACNCHEZ 5055
 GRANDDAM

CONFORMATION G Herds G Dtrs 78% Rel			AJCA-G / 04-24	
PTAT	1.4			
Jersey Udder Index	17.9			

Stature			Tall	+0.8
Strength			Strong	+0.4
Dairy Form			Open Rib	+1.3
Rump Angle			High	-1.1
Rump Width			Wide	+0.8
Rear Legs Side View			Sickle	+0.4
Foot Angle			Steep	+0.1
Fore Attachment			Strong	+2.3
Rear Udder Height			High	+1.6
Rear Udder Width			Wide	+0.4
Udder Cleft			Strong	+1.0
Udder Depth			Shallow	+1.3
Fore Teat Placement			Close	+1.5
Teat Length			Short	-0.1
Rear Teat Rear View			Close	+1.3
Rear Teat Side View			Back	+0.7



JER-Z-BOYZ MACNCHEZ 48947
 THIRD DAM