



TOG ISNER-P

JX VIERRA ELSA {6} VG-81%-2YR-USA

JX SUNSET CANYON GOT MAID {5}

JX VIERRA PRESLEY {6} VG-86%-4YR-USA

CDF VICEROY

JX OAK LANE EUSEBIO ERICA {5} VG-87%-4YR-USA



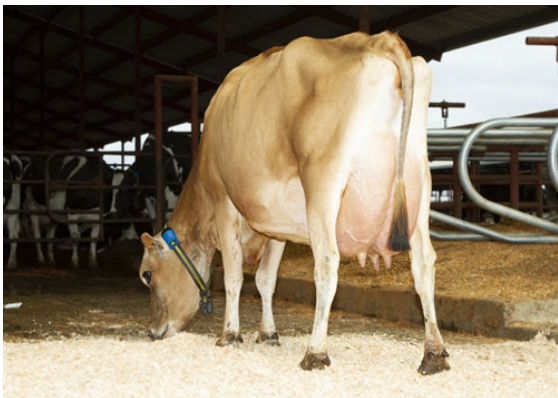
JX VIERRA ELSA {6}

DAM



JX VIERRA PRESLEY {6}

GRANDDAM



JX OAK LANE EUSEBIO ERICA {5}

THIRD DAM

GJPI 154 BBR 100 JH1F JNSF

Reg. #: JE840M3224438306

aAa: 423651

DMS:

Born: 12/09/2021

Kappa Casein: AB

Beta Casein: A2A2

PRODUCTION		G Herds	G Dtrs	77% Rel	CDCB-G / 04-24		
Milk lbs	1121	Fat lbs	79	Fat %	+0.11	Protein lbs	53
NM\$	691	CM\$	701	FM\$	601	GM\$	610
						DWP\$	980

HEALTH & REPRODUCTION		Immunity 94	
Productive Life	4.2	Calf Immunity	94
Somatic Cell Score	3.01	Cow Conception Rate	-0.4
Daughter Pregnancy Rate	-1.2	Heifer Conception Rate	1.7
Livability	0.6		
Heifer Livability	0.2		

CONFORMATION		G Herds	G Dtrs	80% Rel	AJCA-G / 04-24
PTAT	0.2				
Jersey Udder Index	5.9				

